



FRENCH COURSES 2023



La certification qualité a été délivrée
au titre de la catégorie d'action suivante :
ACTIONS DE FORMATION

inlingua® *La Rochelle*

ADULTS

LONG TERM

JUNIORS



SHORT TERM COURSES

www.sprachenmarkt.de, Tel: +49-711-12 85 15 40, service@sprachenmarkt.de

WHERE IS LA ROCHELLE?

On the sunny Atlantic coast of the Charente-Maritime department in Western France lies the exquisite town of La Rochelle. Famous for its rich cultural history, and easy-going way of life, La Rochelle was voted fourth nicest place to live in France in 2021.



SUMMARY

P.03 La Rochelle

P.04 Our School

P.06 10 reasons to choose inlingua La Rochelle

P.07 Adult Courses

P.17 Long-term Courses

P.18 Junior Courses

P.28 Accommodation

P.33 Useful Information

P.34 Getting to La Rochelle

La Ville Belle + Rebelle



LA ROCHELLE

Whereas in the past La Rochelle was a pioneer town from where ships would leave to discover the New World, today the spirit of adventure of the rochelaise can be seen through extraordinary sporting achievements for a place of its size.

Among some of the most recent:

- The Stade Rochelais rugby club won the European Championship in 2022
- Yannick Bestaven won the Vendée Globe, a round the world boat race, in 2021
- Local windsurfer Charline Picon came back last August having won a silver medal for at the Olympic Games in Tokyo.

Why choose La Rochelle?

- La Rochelle is less than 3 hours from Paris
- In the top ten most visited towns by French tourists
- A peaceful town with a population of 80,000
- On the coast and near 3 magnificent islands
- Railway station and airport
- Easy and cheap bicycle hire
- Pleasant maritime climate all year round
- Free cultural events all year round
- Francofolies: one of the biggest music festivals in France
- Parks, museums and the world famous aquarium...

Aimez-vous la gastronomie ?

The excellence of French cuisine is famous around the world, and La Rochelle is no exception. A large variety of local products can be found in the area. Try an oyster in Aytré or the typical Mouclade on the port. Explore your senses with local wines, Cognacs and Pineaux.

Aimez-vous la culture ?

Discover the history of La Rochelle through visits to our museums and monuments with guided tours or by exploring the picturesque streets on your own.



**LA ROCHELLE:
THE 6TH MOST
VISITED TOWNS
BY FRENCH
TOURISTS**



OUR SCHOOL

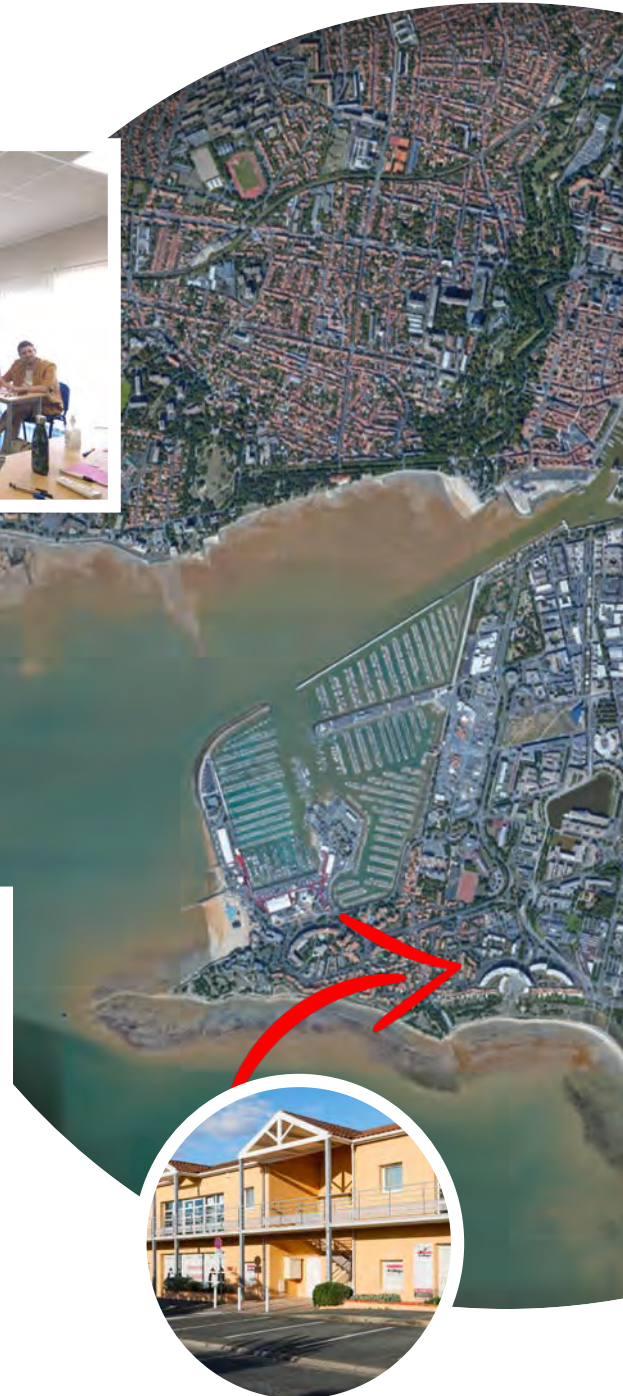
Our facilities

- 14 classrooms
- 2 extra rooms in high season
150m from the school
- A large shady terrace area
- IT room
- Free WiFi
- Free parking
- Covered bike area
- Reading area
- Tourist information area
- Kitchen with fridge and
microwave oven
- Hot and cold drinks



About inlingua

- Open all year round
- One of 300 inlingua schools in over 40 countries around the world
- Ideal location – only a stone's throw from the beach and the centre of town
- An official exam centre



inlingua
à Rochelle



How to get to inlingua

- 10-minute bus ride from the centre of town. The nearest bus stop is less than 100 metres from the school and buses are every 15 minutes.
- Cycle path from the centre of town which



Where to eat ?

Traditional French restaurants and bakeries can be found less than a minute from the school on foot. We provide our students with a list of classic French dining options in the town or next to one of our exquisite beaches.

10 GOOD REASONS TO CHOOSE inlingua LA ROCHELLE

#01 SO MUCH MORE THAN JUST A LANGUAGE COURSE - Students studying at inlingua are not only involved in the classes, they may also participate in a wide range of activities with the school. From evenings on the beach playing games, to running around the town for a scavenger hunt, and even day trips to Bordeaux & Nantes!

#02 A UNIQUE TOWN AND REGION you will enjoy discovering with us. We organize several activities outside of class to accompany the classes as you explore La Rochelle and its surrounding area.

- On Monday afternoons we organize a guided tour of the town for our new students.
- We organize at least one evening "rendez-vous" per week in some of the town's most typical locations where we encourage our students to put their newly acquired language skills to the test in social situations.
- Saturday day trips with a member of our team where our clients can learn more about French culture and way of life.

#03 A WIDE RANGE OF SERVICES:
To make your stay with us as easy as possible, we offer additional services.

A detailed map of the town will be handed out on your first day along with the tide table, and other information that will be useful during your stay.

Bus passes or even a French sim card can make all the difference to your stay.

For any other requirements, such as laundry or transport to the Île de Ré, we will provide you with a list of useful addresses.

For anything else, just ask!

#04 AN ACCOMMODATION SERVICE to help you find housing that suits you best: homestay, residences, apartments, villas or even boats moored in the famous Port des Minimes.

#05 TRANSFER SERVICE
from La Rochelle train station or airport, but also from Nantes, Bordeaux, and, in some cases, Paris.

#06 AN OFFICIAL EXAMINATION CENTRE for the TEF of the Paris Chamber of Commerce. We can organise new sessions depending on the needs of our students.

If you would like to pass the DELF or the DALF, we can also take care of your inscription to the exam.

#07 PROFESSIONAL TRAINERS: all of whom are native French speakers and highly qualified to teach French as a foreign language. They are particularly committed to helping you acquire new language skills & develop your love of France & La Rochelle.

#08 A UNIQUE METHOD: the inlingua method has been proven successful for 50 years all over the world and its education research centre produces modern and effective tools for language teaching.

#09 SMALL GROUPS allow a good exposure to the language for everyone.

#10 NATIONAL HOLIDAYS : We offer three different solutions:

Lessons are held as per normal:
10/04 - 08/05 - 29/05 - 15/08

No lessons, but they are held on another day in the week:
01/05 - 18/05 - 01/11

No lessons but a replacement activity is organised by the school (cruise to an island...)
14/07

ADDITIONAL ACTIVITIES

Students can sign up for several activities offered by various companies and people in La Rochelle and the surrounding area. These are on display at the school and can be organised for small groups.

MOST POPULAR ACTIVITIES
Cooking lessons : 60€/person
Surfing lessons : 50€/person

SUMMARY ADULT COURSES



P.08

General French 15h



P.09

General French 20h



P.10

Exam Preparation



P.11

30+



P.12

50+ Culture



P.14

Intensive 25h or 30h



P.15

One-to-One & Combi



P.16

Family Programme



P.17

Long-term Courses

GENERAL FRENCH

15 HOURS

This all-rounder programme is adapted to your language skills, your needs, your interests, and your objectives. Emphasis is put on oral communication skills. Recordings and videos are used in lessons to improve oral comprehension. A great programme for both beginners and those who wish to polish up on the French they already have.



Course dates

All levels, except beginner, are accepted all year-round and you can start whenever you wish.

Complete beginners must sign up for at least two weeks of French courses starting on one of the following dates:

9th January - 6th March - 10th April - 10 July 7th August - 2nd October

A beginner level is given to those who have no knowledge of French or who cannot communicate, even with simple sentences (Online level test result below A1.3).

If a student with a beginner level registers for a course outside of specific starting dates for beginners, we will offer them an adapted one-to-one programme as stated in our terms & conditions.

Timetable

Monday: Classes from 10:00 to 1:15 (15-minute break)

Tuesday to Friday: Classes from 9:00 to 12:15 (15-minute break)

First day:

8:30 to 9:30 – Oral placement test

9:30 to 10:00 – Presentation of the team and the week's activities

Organisation

During your inscription, you will be asked to specify your needs. Our online multiple-choice level test must be completed at least 15 days before the arrival date, there is also a short one-to-one interview on the first day which enables us to organise groups according to levels and expectations.

- ✓ Course open to students over 16
- ✓ From 1 week to 1 year
- ✓ All year-round
- ✓ Separate groups for each level



Scan this code to see our Terms & Conditions online

PRICES PER WEEK AND PER PERSON

PROGRAMME	1 WEEK	2-3 WEEKS	4-8 WEEKS	9-12 WEEKS	12+ WEEKS
General French 15 hours	290 €	270 €	250 €	234 €	210 €

ENROLMENT FEE: € 80

GENERAL FRENCH

20 HOURS

Dive into a discovery of French culture and history with our 20-hour programme. The General French course plus two afternoon workshops per week enable students to apply their newly acquired language skills to interesting topics.

Minimum Level Required

A2 for taking part in workshops.

Horaires

15 hours of morning classes + Tuesdays & Thursdays from 1:30pm to 4:15 PM (15-minute break).

Workshops

These workshops offer our students both the chance to use their French in a more relaxed environment and to discover different points of French culture.

The workshops bring together adult students from different classes in the school. 10 to 15 people depending on the theme. The workshops take place either at inlingua or in the city.

Students must have at least an A2 level to participate in these classes.

For students who have not yet obtained an A2 level, other alternatives may be offered such as multimedia projects or conversation classes specially designed for lower levels.

It is possible to sign up to the 20-hour programme for a part of your stay and follow other programmes on other weeks.



History:

- En route vers le Québec
- La Rochelle's Protestant history
- The French Revolution
- The Second World War
- Napoleon : An Emperor's Biography
- A guided tour of the towers on the Vieux Port of La Rochelle

French Culture:

- Fashion in France
- Strikes & Protests in France
- French Art - classic and modern
- The place of sport in French culture

Literature:

- Exploring the works of famous French authors

Intercultural themes:

- Stereotypes
- French communities around the world
- The Nouveau Monde Museum

French Gastronomy:

- A presentation of French desserts
- Wine & Cheese tasting
- Discovery of local products and specialities

Regions and Departments:

- Brittany and the Breton culture
- Marseille - the melting pot of France
- Le Nord Pas de Calais
- Paris - the city of lights

These themes change regularly.

PRICES PER WEEK AND PER PERSON

PROGRAMME	1 WEEK	2-3 WEEKS	4-8 WEEKS	9-12 WEEKS	12+ WEEKS
General French 20 hours	364 €	342 €	320 €	300 €	270 €

ENROLMENT FEE: € 80

EXAM PREPARATION

inlingua La Rochelle can help you prepare for different official French language exams (DELFL, DALFL, TEF,), end of secondary education exams (Abitur, Leaving Cert, A-Levels, Bachillerato..) and binational exams (bachibac,



inlingua La Rochelle is an examination centre for the TEF exam. The TEF, created by the Paris Chamber of Commerce, is an internationally recognized test which measures your knowledge and skills in French. It is recommended to book your course at least three weeks in advance to ensure classes meet the student's specific needs.

DELFL - DALFL

With your trainers who are official examiners for the DELFL & DALFL exams you can prepare for exam levels A1 to C1. The DELFL-DALFL classes allow students to discover the details of each exam and the acquisition of strategies to obtain the best score possible in the 4-part exam (oral and written comprehension, oral and written expression).

We are in contact with our neighboring examination centres (La Rochelle, Royan, Tours, Bordeaux, & Amboise) and can provide you with the calendar of the different exam sessions as soon as it

published in January or February. Inscriptions to the DELFL take place at least 1 month before the date of the exam. If you already know the level you would like to take, we can take care of your inscription. Otherwise, it is better to wait until you are at the school so the teachers can guide you and help you make your decision.

DELFL Preparation - in groups

- From 19th June to 13th October
15 hours of General French classes from Monday to Friday
- 5 hours of exam preparation on Wednesday and Friday from 1:30 to 4:15 (15-minute break)
- Maximum of 6 people per group

The Exam Prep classes focus on the written part of the exam and on the specific details of each oral test. The students are together for most of the sessions and are separated for mock exams and workshops on the exam level they have chosen.

DELFL & DALFL or Other Exam Preparation - One-to-one classes

For students who wish to prepare for a different exam (DALFL, Leaving Cert, A-Levels, Matura...) it is possible to combine group classes in the morning with One-to-One classes in the afternoons.

- All year round
- 15 hours of General French classes in groups from Monday to Friday
- 5 hours of one-to-one exam preparation classes on Wednesday and Friday from 1:30 to 4:15 (15-minute break). We can organise a closed group for those who wish to come with a friend and have the exam prep classes together.

PRICES PER WEEK AND PER PERSON

PROGRAMME	1 WEEK	2-3 WEEKS	4-8 WEEKS
DELFL: 20 hours in groups	490 €	470 €	450 €
DELFL - DALFL - Other Exams 15h General French classes + 5 hours One-to-One	670 €	636 €	606 €

ENROLMENT FEE: € 80

30+

In September our 30+ course gives our adult students the opportunity to develop their language skills through discussions with other 30+ students through topics on current affairs and several activities.



- From A2 to B2
- Open to students over 30 years-old
- 1 week minimum
- Maximum of 6 students per group
- 15 or 20 hours

Dates : From 4th to 29th September



Scan this code to see our Terms & Conditions online

Programme

15 hours of classes from Monday to Friday (3 hours per day)
5 hours of afternoon workshops may be added for a total of 20 hours per week.

For students who want a more personalised approach to their learning, this programme can also be combined with One-to-One classes (see Combi Programme p.15).

Timetable

Monday: from 10:00 to 1:15 (15-minute break)

Tuesday - Friday: from 9:00 to 12:15 (15-minute break)

First day:

8:30 to 9:30: Oral placement tests

9:30 to 10:00: Presentation of the team and the week's activities

Programme Details

In September inlingua offers their 30+ students the opportunity to learn French through activities as well as their standard classes.

Several afternoon or evening activities are offered on top of the French course allowing our students to practice their French in a more immersive environment. These activities include our weekly P'tit RDV, visits to museums, the towns and villages around La Rochelle, wine tasting, cognac tours, oyster tasting, and even an evening fishing in a hut over the sea with the famous carrelets in Angoulins

Some activities require financial participation from the students (surf lessons, cooking lessons, catamaran cruise etc.)

We guarantee our 30+ students the possibility of renting a bike for the duration of their stay (20€/week).

PRICES PER WEEK AND PER PERSON

PROGRAMME	1 WEEK	2-3 WEEKS	4 WEEKS
30+ 15 hours	454 €	426 €	396 €
30+ 20 hours*	526 €	488 €	460 €

ENROLMENT FEE: € 80

* The afternoon cultural workshops on the 20h course are with adult students of all ages.

50+ CULTURE



This programme brings together students over 50 who are looking for the same thing: to learn French in a relaxed environment and through discovering the cultural heritage of France and the region around La Rochelle.

The teaching method focuses on effective independent communication, allowing you to make the most of all the activities offered. In addition, the effective audiovisual tools which are used allow you to practice in realistic situations.

Weekly programme

- 2 guided tours: History of La Rochelle, guided tour of museums, meeting with local artisans, visit of General Lafayette's famous ship, and many more
- 2 cultural workshops: French history, French cuisine, trying local specialities etc.
- At least 1 evening out to enjoy the local nightlife in fantastic bars and restaurants
- Saturday excursions: tour of the Île de Ré, Bordeaux and its monuments and the Cité du vin museum, visit the cellars of Cognac with a guided tour and brandy tasting, or even cruise along the Marais Poitevin on a boat
- Our visits are always accompanied by a member of the inlingua team, or a tour guide to help you discover hidden gems and better understand the local history.

Several 2-week courses take place out of the high summer season. It is recommended that the stay be for 2 weeks, however 1-week courses are also possible. Arrival must be in time for the first week of each course.

Hours

Monday: 10:00 to 1:15 (15-minute break)
Tuesday to Friday: 9:00 to 12:15
First day: oral placement test & welcome breakfast at 8:30

Level

A2 to B2

Groups

3-6 people per level group*

* in the case where the number of participants is less than 3 inlingua reserves the right to put participants in groups with the 30+ programme.

Included: transport costs, visits (not including lunch on excursions), bus pass (for town and sea bus in La Rochelle).



Example of the timetable for the first week

	MONDAY	TUESDAY	WEDNESDAY	THURSDAY	FRIDAY	SATURDAY
Morning	French classes					Excursion to the île de Ré
Après-midi	Cultural Tour <i>Guided tour of the town with a teacher</i>	Cultural Workshop <i>La Gastronomie Française</i>	Cultural Tour <i>Trip to Fouras & Cognac tour</i>	Cultural Workshop <i>Découverte de spécialités locales</i>	Lunch in Marennes at <i>L'Eclade</i>	
Soirée		18:30 Apéritif sur le port		16:30 Dégustation d'huîtres à l'école		

* The first week focuses on French gastronomy, the second week focuses on French culture and history

Dates

15th May – 26th May
Arrival on 14th May

18 September – 29 September
Arrival on 17th September

Accommodation

In terms of accommodation you can choose between a host family, a student residence, or ask for our personalised accommodation service to find the apartment, the house or the villa that you need (page 30).

PRICE PER WEEK AND PER PERSON

1 – 2 WEEKS

630 €

ENROLMENT FEE: € 80

Extras

It is possible to book a French cookery class during your stay. Please contact us before your arrival if you would like to set it up.

INTENSIVE



This programme was specifically designed for students who wish to develop their French language skills in a professional context and to enrich their cultural knowledge. This programme is recognised by several regions in Germany in accordance with the Bildungsurlaub.



Minimum Level Required A1

Minimum Age 18

Number of hours 25 - 30

Minimum Duration 1 week

Group maximum of 10 students in the morning classes and 5 in the multimedia and conversation workshops

Dates From 3rd April to 3rd November

Our modern multimedia tools will help our teachers efficiently train the students during the multimedia workshops. The teacher will always be present during these workshops to help and advise the students.

The cultural workshops enable our students to discover fascinating

points of the French way of life in a more relaxed environment.

The conversation classes then allow the students to put their newly acquired skills into action.

Intensive programmes combining both group and one-to-one classes can be found on page 15.

Sample Week :

	MONDAY	TUESDAY	WEDNESDAY	THURSDAY	FRIDAY
Morning	8:30-10:00 Oral placement test and welcome breakfast				
	10:00 - 01:15 * General French		9:00-12:15 * General French		
Lunch break					
Afternoon	Guided tour of the town for new students OR Multimedia Workshop* for students in their second week	1:30-4:15 Cultural Workshop*	1:30-3:00 Multimedia workshop*	1:30-4:15 Cultural Workshop*	1:30-3:00 Multimedia workshop*
		4:30-5:30 Multimedia workshop*	3:15-4:45 Conversation Class*	4:30-5:30 Multimedia workshop*	3:15-4:45 Conversation Class*

25h programme / Additional lessons with 30h programme / *With a teacher

PRICES PER WEEK AND PER PERSON

PROGRAMME	1 WEEK	2-3 WEEKS
Intensive 25 hours	396 €	372 €
Intensive 30 hours	492 €	470 €
ENROLMENT FEE: € 80		

ADULT COURSES

COURS PARTICULIERS & COMBI

This programme is for students who would like a course tailored to fit their specific needs. The programme can be made up of one-to-one classes or combined with the General French, or even with the 30+ programmes.

Individual classes**15 hours:**

3 hours per day in the morning OR afternoon

20 hours:

4 hours per day in the morning OR afternoon, or both

25 hours:

5 hours per day scheduled for you between 9am and 7pm

30 hours:

6 hours per day scheduled for you between 9am and 7pm

Combi

5 or 10 hours of one-to-one classes can be added to the General French course or the 30+ programme in September.

One-to-one classes take place in the afternoon. Your timetable will be given to you on your first day.

Dates

All year round

NUMBER OF HOURS	PROGRAMME	PROGRAMME WITH GENERAL FRENCH	PROGRAMME WITH 30+
20h00	15 hours of group classes + 5 hours of one-to-one	Combi A	Combi B
25h00	15 hours of group classes + 2 workshops + 5 hours of one-to-one	Combi C	Combi D
	15 hours of group classes + 10 hours of one-to-one	Combi E	Combi F
30h00	15 hours of group classes + 2 workshops + 10 hours of one-to-one	Combi G	Combi H
	15 hours of group classes + 15 hours of one-to-one	Combi I	Combi J



PRICES PER WEEK AND PER PERSON

Bildungsurlaub Approved

PROGRAMMES	1 WEEK	2-3 WEEKS	4-8 WEEKS
One-to-one 15h	1 140 €	1 110 €	1 080 €
One-to-one 20h	1 520 €	1 480 €	1 440 €
One-to-one 25h	1 900 €	1 850 €	1 800 €
One-to-one 30h	2 280 €	2 220 €	2 160 €
Combi A 20h	670 €	636 €	600 €
Combi B 20h	834 €	796 €	756 €
Combi C 25h	746 €	712 €	676 €
Combi D 25h	906 €	858 €	820 €
Combi E 25h	1 058 €	1 012 €	966 €
Combi F 25h	1 214 €	1 166 €	1 116 €
Combi G 30h	1 126 €	1 082 €	1 036 €
Combi H 30h	1 286 €	1 228 €	1 180 €
Combi I 30h	1 430 €	1 376 €	1 326 €
Combi J 30h	1 594 €	1 536 €	1 476 €

ENROLMENT FEE: € 80

FAMILY PROGRAMMES

inlingua La Rochelle offers a wide range of activities for parents, grandparents, and children – programmes where each person can select the activities of their choice with or without French lessons.



FAMILY PROGRAMME

Our French classes are open to children from the age of 8 at Easter and during the Summer holidays (see page 20).

Group classes take place in the mornings no matter the age of the participant. inlingua offers alternative activities during the French classes, especially for younger children.

For children under the age of 6, inlingua offers a baby sitting service. Our babysitters are all professionally trained to ensure the utmost safety of your children, and they may even learn a bit of French along the way!

SAILING PROGRAMME

inlingua works hand in hand with our partners at the La Rochelle Nautique sailing school, only a short walk from the school.

Sailing lessons take place in the mornings from 10 o' clock to 1 o' clock:

- For 4/5 year-olds - le jardin des mers
- For 6/7 year-olds - les moussaillons
- For 8/9 year-olds - l'optimiste
- For 10/12 ans catamaran or windsurfing

Our programme includes an activity with a member of the inlingua team between 9 and 10 o' clock, the transport from the school to the club, the club's licence with their specific insurance, and alternative activities in case the weather conditions do not allow for sailing.

Homestay accommodation can be possible for this programme depending on the number of participants. We can also help you find an apartment or house adapted to your needs (see page 31).

PROGRAMME	PRICE
4 to 5-year-olds	298 €
6 to 7-year-olds	298 €
8 to 9-year-olds	385 €
From 10	385 €
JUNIOR ENROLMENT FEE: € 60	



LONG-TERM COURSES

inlingua's long term courses enable students to obtain the B2 level which is necessary to apply to French higher education.

inlingua offers an ideal learning structure, with a tutor being assigned to each student to closely monitor their progress and make sure they have all the tools they need to reach their objective. A language level test will be carried out once every term to show the student their progression.



Programme Details

We recommend taking part in the 20h programme to maximise your learning potential. However, the 15h programme is also available for those wish to have fewer hours.

inlingua also offers a full support service to help students get set up in France offering help with :

- Documents for visa application
- Finding accommodation
- Guarantor service
- Insurance & banking services
- Bus card, SIM card
- Applying to higher education
- And much more

Our partners at higher education schools and universities accepted to examine your application before you have reached the required B2 level. This means you can already have your studies planned out before even arriving in France to learn French. You can choose what you wish to study from a wide range of domains such as:

- Marketing
- Management
- Human Ressources
- Fashion
- Tourism
- Computer Science
- Law
- Cuisine
- And much more...

The school you choose will examine your application and will give you an answer within a month. We will ask for students to choose at least three schools to which we will apply in their order of preference.

Once you have received your acceptance letter from the school, it is up to you to reach the B2 level before the beginning of the next school year.

For more details, ask us for the Long Term Courses brochure or download it from our website.



Scan this code to see our Long-term Courses brochure online

PROGRAMME	LEVELS A0 - B1			LEVEL B1 → B2
	1 TERM 12 WEEKS	2 TERMS 24 WEEKS	3 TERMS 36 WEEKS	1 TERM 12 WEEKS
15 hours	2 320 €	4 506 €	6 286 €	/
20 hours	3 080 €	5 818 €	8 117 €	/
25 hours				3 643 € students enrolled for one term only
15h General French + 5h Exam Prep + 5h University Prep	/	/	/	2 823 € students enrolled for more than one term
ENROLMENT FEE : 140 €				

JUNIOR COURSES

SUMMARY JUNIOR COURSES



P.19

School Groups



P.20

Junior French Course 15h



P.21

Full-day Programmes



P.22

Camp - Multiactivity



P.23

Camp - Sailing/Windsurfing



P.24

Camp - Sea, Surf & Wind



P.26

Croisière Junior



P.27

Junior Accommodation

SCHOOL GROUPS



IMMERSION IN FRANCE

What better way to motivate and inspire your students throughout the year!

Inlingua La Rochelle offers a school programme specially adapted for groups. We regularly receive groups from all over the world such as Austria, Australia, Spain, Italy, Tunisia, Ukraine, and even Vietnam.

Classes

Classes in small groups are focused around oral communication and enable students to progress faster. Lessons are generally in the mornings but may be organised in the afternoons to reduce the cost.

Activities

Activities are either organised by the accompanying adult from the group, or under the supervision of the team at Inlingua.

Accommodation

Accommodation can either be organised in host families, at the youth hostel right next to the school, or in a 2/3 star hotel.

Each project is meticulously studied in terms of programmes, transfers, accommodation, and activities to produce a quote that meets both your expectations and your budget.

Get in touch with us to ask for our special School Groups brochure or download it from our website.

JUNIOR FRENCH COURSE

The inlingua method allows students to work on all aspects of the French language and culture and get the most out of an immersive experience in the country.



Classes

Our aim is for our students to learn French in a natural way and work on speaking and writing skills through lively and interactive activities. We emphasize the importance of speaking in real-life situations and working on conversational fluidity. Parents also participating in our courses have frequently told us their child had got a real taste for the French language after their stay with inlingua.

Groups

Through our online level placement test and an oral test with a teacher on the first morning, our teachers will make sure that the students participate in classes appropriate for their level to ensure optimal progress with their French.

Class projects

Each week the students work on a class project allowing them to use all they have learned in a real-life situation, for example: setting up a travel blog to talk about their time in La Rochelle, activities that can be done here, giving advice to future travellers. Students often create their own short films, or write stories in the classic French "bande dessinée" style.

Programme

Monday: 10:00 to 1:15 (15-min break)

Tuesday to friday: from 9:00 to 12:15 (15-min break)

Dates

From 10th to 28th April

From 19 June to 25 August

- ✓ From 8 years old
- ✓ 1 week minimum
- ✓ Open to beginners
- ✓ Maximum 10 per group
- ✓ Accommodation and activities not included in this programme

PRIX PAR PERSONNE ET PAR SEMAINE

PROGRAMME	1 WEEK	2 WEEKS	4-8 WEEKS
Junior French Course 15h	298 €	280 €	264 €

ENROLMENT FEE: €60

JUNIOR COURSES

FULL-DAY COURSES

ACCOMMODATION NOT INCLUDED
FROM 13 YEARS OLD
COMPATIBLE WITH THE FAMILY PROGRAMME



Timetable

• LESSONS

Monday: 10:00 to 1:15

Tuesday to Friday: from 9:00 to 12:15 (15-minute break)

First day: oral tests and welcome breakfast at 8:30.

- **Lunch** break supervised by a staff member (meal provided by parents or as an additional option).

- **Activities or Sailing/Windsurfing** from 2pm to 6pm + evening activities (transport to accommodation not included).

It is possible to combine this programme with the Exam Preparation programme. In this case Wednesday and Friday afternoon activities will be replaced with exam workshops.

It is also possible to add an additional 5 hours of one-to-one classes to this course (1 hour per day before afternoon activities).

Multi-activity

We offer a wide range of exciting and enjoyable activities to our students (for more information see p22/23).

Organisation

On Mondays, a guided tour of the city is organized for our new students while a sports or cultural activity is planned for the others. A schedule with all the accurate information will be given on Monday morning. Each afternoon, two activities are supervised by a qualified staff member, and students all have a snack together mid-afternoon. Transportation between the school and the activities is provided and are included in this programme.

Dates - Multiactivity

From 10th to 28th April

From 19th June to 25th August

Sailing

The sailing club is less than a 1km from inlingua. The club has been affiliated with the French Sailing Federation for over 20 years. All the equipment is provided on site, and the activity is supervised by a professional. Around 70 young students come every week, 95% of whom are French, so it's a fantastic opportunity to meet new people and use language skills acquired in class!

Organisation

On the first day, a member of staff will take the children to the club on foot or by car. Meeting point with the parents is at 6pm at the club. Students over the age of 13 will then be allowed to go from the school to the club by themselves.

Dates - Sailing or Windsurfing

Du 10 au 21 Avril

Du 3rd July au 25 Août

PRICE PER WEEK AND PER PERSON (WITHOUT ACCOMMODATION)

PROGRAMME	1 WEEK	2-3 WEEKS	4-8 WEEKS
Français + Multiactivity	610 €	590 €	570 €
Français + Sailing or Windsurfing	699 €	690 €	660 €
Français + Multiactivity + Exam prep.	699 €	690 €	660 €
Français + Sea, Surf, & Wind	989 €	960 €	940 €
Additional 5 hours One-to-One	365 €	365 €	365 €

ENROLMENT FEE: €60 - ADDITIONAL COST FOR LUNCH : 50€/WEEK.

CAMP – MULTIACTIVITY

- ✓ Open to 13+ students
- ✓ 1 week minimum
- ✓ Maximum of 10 students per group
- ✓ 15 hours per week
- ✓ Homestay accommodation included
- ✓ Possibility of taking part in different programmes each week (to be organised with your inscription)



Make the most of your summer with our **Multiactivity programme!** This programme allows you to improve your French with classes in the mornings while also taking part in several activities every afternoon.

Students in the Multiactivity programme have two activities every afternoon between 2 and 6 pm (or one big activity).

Two evening activities are organised each week (Tuesdays & Thursdays) where the students all eat together at the school or at the beach.



Scan here to see a sample programme online



Dates - Multiactivity

From 9th to 29th April

From 18th June to 26th August

Daily Programme

- 3 hours of morning classes
- Lunch break with group leaders
- 2 activities per afternoon
- Supper at a restaurant for those in the residence, or with the host family for the others
- Evening activities - Some evenings the activities finish quite late. Our group leaders will drive the students home in these cases.
- Curfews for minors :
For under 15s : 21h
For 15+ : 22h

Group Classes

Monday : From 10:00 to 1:15

Tuesday to Friday: from 9:00 to 12:15

Optional extras :

- Exam prep: You can prepare for exams such as the AbiBac, A-levels, Bachibac, Leaving Cert and the Matura with our Exam Prep classes in groups of no more than 6 people on Wednesdays and Fridays from 1:15 to 4:15 (15-minute break)
- One-to-one: You can also have an additional 5 hours of individual classes per week. The times for these classes will be given to you on your first day.

PRICE PER WEEK AND PER PERSON

(FULL-BOARD HOMESTAY ACCOMMODATION AND ACTIVITIES INCLUDED)

PROGRAMME	1 WEEK	2-3 WEEKS	4-8 WEEKS
French + Multiactivity	930 €	906 €	890 €
Multiactivity + Exam Prep	1 030 €	998 €	970 €
5 additional hours of One-to-One	365 €	365 €	365 €

ENROLMENT FEE: € 60 / ADDITIONAL FEE FOR STUDENT RESIDENCE OR SPECIAL DIET (PAGE 27)

SAILING / WINDSURFING



Dates - Sailing/Windsurfing

From 9th to 22nd April
From 2nd July to 26th August

The sailing club La Rochelle Nautique is located less than 1km from inlingua and 200 meters from our student residence. Watersports take place from Monday to Friday between 2pm and 6pm.

This course is a great opportunity for our students to meet young French people who are members of the club or other teenagers on holiday.

Around 75 students come to sail every week, 95% of whom are French, so it's a great opportunity to meet people and practice the language.

Sailing Course

The sailing course takes place in catamarans where students are 2 per boat. When possible, each student is teamed up with a French teenager for them to get the best out of their immersive experience.

Students have lunch at the school with everyone else before leaving to go to the club around 1:40. The sailing classes then start at 2pm.

Students prepare the boats and go sailing with their instructor for 4 hours every afternoon.

It is possible to choose different programmes on different weeks upon booking. However, programmes may not be changed during the course.

Windsurfing Course

Discover the joys of zipping across the water with our windsurfing course offering 4 hours of classes every afternoon (Mon-Fri)

There are different groups according to the participants' levels so don't worry if you're a complete beginner!

The windsurfing classes are quite physically demanding so think about maybe combining this programme with a week of sailing or multiactivity.

It is not possible to change to a different course mid-week and we cannot guarantee a place in a different programme to those confirmed at the time of inscription. This depends on availability at the sailing club.



Scan here to see a sample programme online



PRICE PER WEEK AND PER PERSON (FULL-BOARD HOMESTAY ACCOMMODATION AND ACTIVITIES)

PROGRAMME	1 WEEK	2-3 WEEKS	4-8 WEEKS
French + Sailing	1 030 €	998 €	970 €
French + Windsurfing	1 030 €	998 €	970 €

ENROLMENT FEE: €60 / ADDITIONAL FEE FOR STUDENT RESIDENCE OR SPECIAL DIET (PAGE 27)

SEA, SURF, & WIND

This new programme offers our students the chance to discover new sensations with various outdoor sports available in La Rochelle and the surrounding area. Surf, sand yachting, wakeboarding, skating and much, more!



- ✓ Open to 13+ students
- ✓ Minimum 1 week
- ✓ Maximum 8 students
- ✓ 15 hours per week
- ✓ Accommodation with host family included
- ✓ Possibility of choosing a different programme each week (upon booking)

Come and discover our new programme - **Sea, Surf, & Wind**. A programme which will enable the more adventurous of our students to discover some of the best watersports available in the area around La Rochelle.

Organisation

- 3 hours of morning classes
- Lunch break with group leaders
- 2 activities per afternoon
- Supper at a restaurant for those in the residence, or with the host family for the others
- Evening activities - Some evenings the activities finish quite late. Our group leaders will drive the students home in these cases.
- Curfews for minors :
For under 15s : 21h
For 15+ : 22h

Activities

Thanks to partnerships with local sports structures, our students can take part in a wide range of new activities such as:

Surfing Lessons

With a surf instructor offering classes wherever the waves are that day. The instructor picks up the students and drives them to the best spot of the day to guarantee good learning conditions.

On days where conditions do not allow for surfing classes (rough seas, etc.), the activity is replaced with skateboarding classes with the same instructor.

Sand Yachting

Students zip across the sand for 3-hour trips along the beach with our partner club in La Faute sur Mer.

PRICE PER WEEK AND PER PERSON

(FULL-BOARD HOMESTAY ACCOMMODATION AND ACTIVITIES INCLUDED)

1 WEEK	2-3 WEEKS	4-8 WEEKS
1 320 €	1 250 €	1 250 €

ENROLMENT FEE: €60 / ADDITIONAL FEE FOR STUDENT RESIDENCE OR SPECIAL DIET (PAGE 27)

**Waterski, Wakeboard, Kneeboard, Skateboarding, Zipwires,
Sand Yachting, Surfing, Climbing, Slackline, Trampoline,
Drone Flying Courses, Underwater Photography,
And much more!**



**New
Programme
2023**



Wakeboard / Waterskiing

We take our students to the Base Nautique d'Aiguillon sur Mer for waterski, kneeboard, and wakeboard sessions guided by their instructors. After a few sessions there are even ramps available for the more adventurous students!

Students also have access to two courses on the water, but be careful not to fall off!

Stand Up Paddle

With the inlingua group leaders our students go off on adventures with paddleboards. They start of going down a peaceful canal in La Rochelle before taking to the sea once they have mastered the basics.

We organise courses for the students to go through and team races. Sometimes we rent a XXL paddleboard allowing for fun team-building exercises with all the students on the same board.

Dates - Sea, Surf, & Wind

From 18th June to 19th August

- Homestay accommodation included
- This programme is compatible with residence accommodation

Sample programme (may vary depending on the week and the weather)

	MONDAY	TUESDAY	WEDNESDAY	THURSDAY	FRIDAY	SATURDAY
Morning	French Classes					Excursion to the île de Ré
Afternoon	Surfing Classes	Underwater Photography & Drone Flying Course	Tree-top Zipwires	Sand Yachting	Moutnain Kiteboarding	
Evening	At home or at the residence	Barbecue at the school	At home or at the residence	Party on the beach with Group Leaders	At home or at the residence	

JUNIOR CRUISE

The junior cruise enables you to put into practice all your newly acquired language skills in exceptional surroundings. Spend 5 days on board with other students and French teenagers!



- ✓ 1 week minimum of French lessons before the cruise
- ✓ Minimum A1 level
- ✓ 5 days of sailing
- ✓ Accommodation on board
- ✓ 14 to 17 years old

With our partners at the La Rochelle yachting school, inlingua offers you a "live-in" activity coached by a professional French skipper. Whatever your level in sailing, set off for an unforgettable adventure: the sea, swimming, cooking on board, parties, games, songs, fishing. You will learn the joys of sailing in a holiday atmosphere. Life at sea is a dream come true.

Organisation

The cruise starts on Monday at 9am and returns on Friday around 6 pm.

The weekend before the cruise: For those in the junior camp - full board, excursion and activities included.

The weekend following the cruise: Full board accommodation until departure on the Saturday.

On Board

A 30-foot yacht, (9.5m) which brings together comfort and speed. 5 students and a skipper share the living quarters: 2 private cabins and the « mess » kitchen, living area, bathroom and toilet. Different types of navigation will be addressed: cruising, manoeuvres in a port, trimming the sails and plotting a course on a chart as well as racing strategies. The navigation zone may include, the bay of La Rochelle and its surrounding islands right up to Brittany or even down to the Gironde.

Dates

From 17th to 21st July
From 31 July to 4th August
From 14th to 18th August

PRICE PER WEEK AND PER PERSON

JUNIOR CRUISE

850 €

ACCOMMODATION JUNIOR CAMPS



HOMESTAY

Dates

From 9th to 29th April
From 18th June to 26th August

Discover the French way of life through an authentic experience of French living. Our host families are individually selected for their friendliness and security. We regularly meet with them in order to create a true relationship based on trust

Host families will welcome students either at the airport or at the train station upon arrival, and they will bring them to school on the first morning.

Host families live on average 30 minutes from the school either by bike or by bus (45 mn maximum). For those who prefer to take the bus, a 7-day ticket is provided, giving the student unlimited travel around the town.

All our families have internet in their homes, so students will be able to talk to their friends/families in the evenings.

Students participating in Junior courses will receive a packed lunch each day from their host family which they can enjoy at the school with the other students. .

Rules for living with a host family must be accepted upon enrolment by students and signed by parents/guardian.

The cost of homestay accommodation is included in the package price of Junior Camps.

Additional cost for special diet:

- 50 €/week - vegan or gluten free diet

RESIDENCE (14-17)

Dates

From 2nd July to 26th August

We also offer accommodation in a residence only a short walk from the school (600m). All the junior rooms are grouped together on the same floor where our group leaders live on site taking care of activities and the safety of the group.

- Each room has two beds, toilets and a shower.
- Free WiFi throughout the residence
- Common area downstairs with access to drinks and snacks
- Large swimming pool with a huge terrace outside
- Rooftop terrace with a 360° view of the port and the ocean

Meals

Breakfast is served either on the outside terrace or in the common area. A wide range of options are available to our students.

For lunch, salade and various sandwiches are offered to the students along with fruits and desserts.

Every evening, the students from the residence go to a restaurant for dinner either in Les Minimes or in the town centre. This does not apply to evening where they eat with the other students (barbecues etc.)

A laundry service is included with a partner near the residence, and bedding is changed regularly.

Additional cost for Residence Accommodation

330€ / week

ACCOMMODATION

Vieux port
de La Rochelle



Plage Des Minimés

Escale marine



inlingua



New Rochelle

HOMESTAY



Homestay accommodation enables you to embrace a fully immersive experience into French culture, cuisine, and way of life in a relaxed environment. If you are looking for an experience of "la vie rochelaise", this is the option for you!

Minimum age 16 for adult courses

Minimum length 1 week

Distance On average 30 minutes from the school by bike or by bus. Maximum distance, 45 minutes by bus.

We work with a network of local families who enjoy welcoming students from all over the world for the enriching cultural experience that guests bring to their homes. Living with a real French host can be an eye opener to our way of life through an authentic experience of the local culture, cuisine, and traditions.

Arrivals take place on Sundays and departures on Saturdays. Your hosts will pick you up from either the airport or train station upon arrival, and they will bring you to school on your first morning to show you the way.

Prior to your arrival, you will receive your host's profile, which includes information on the person/people you will be staying with, their home address, email address, phone number and the details of how to get from their house/flat to the school.

You can also request for a host family with a private bathroom. Students requesting a private bathroom must do so at least one month before their arrival. Families offering private bathrooms are limited so we advise that you book well in advance.

Our hosts will provide students with half-board accommodation (breakfast and dinner) and full-board on Sundays.

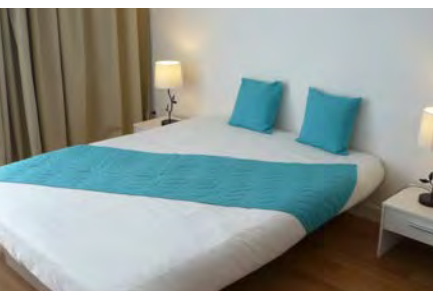
Students participating in Junior courses will receive a packed lunch each day from their host family which they can enjoy at the school with the other students.

Rules for living with a host family must be accepted and signed by students upon enrolment. For students under the age of 18, these must also be signed by their parents/legal guardian.

PRICES PER WEEK AND PER PERSON

DURATION - BOARD	UNDER 3 MONTHS	FROM 3 MONTHS
Homestay - Half-board	215 €	170 €
Homestay + private bathroom or special diet (vegan, gluten free)	260 €	220 €
Extra Night	32 €	25 €
ACCOMMODATION ADMIN FEE: 70 € / PERSON		

NEW ROCHELLE



The Résidence New Rochelle is ideally located only a 5-minute walk from inlingua. You will find an open common area and a large swimming pool. An ideal location only 300 metres from the beach!

Students can benefit from our privatised rooms in this between April and August. However, between September and the end of March, the residence has very few available studios.

The apartments are around 16m² and contain:

- A fully equipped kitchen area (sink, two induction plates, a microwave, a fridge, cutlery, dishes, dining are in most studios)
- An individual bathroom (bath or shower, toilets in a separate room)

- A main room with a double bed, a desk/table, a chair, a wardrobe, electric heating, a flat screen TV.

- Towels and linen included

- Options: Kettle, coffee machine, games (upon request)

- Possibility of a parking space for an additional 15€/week

- Wi-Fi accessible throughout the residence.

For long stays, please get in touch with us before booking. For short-term stays, the studio may be occupied by two students if they book together with no additional charges. An additional 40€ will be charged if the flat is not cleaned before leaving the residence.

PRICES (ARRIVALS ON SUNDAYS - DEPARTURES ON SATURDAYS)

	LOW SEASON (SEPT - JUNE)	HIGH SEASON (JULY - AUGUST)
Studio/month	More than 24 weeks : 565 € Fewer than 24 weeks : 659 €	1 199 €
Studio/week	349 €	469 €
Extra night	67 €	78 €
TOURIST TAX : 4.20 € / PERSON & PER DAY / ACCOMMODATION ADMIN FEE: 70 € / PERSON		

ESCALE MARINE



This 3* residence is located near the centre of town; You can walk to the famous Vieux Port in under 10 minutes, or even faster with the sea bus (boat).

This residence has little availability during the summer months, and the prices are not fixed at these times. If you would like to stay at these times, please get in touch.

inlingua is only a 5-minute bus ride, a 10-minute cycle, or an enjoyable 20-minute stroll away from the residence. The studios are for one or two people and are modern and comfortable. The studio apartments are all 18m².

They each contain a kitchen area, a microwave oven, an induction ring, a flat screen TV and a bathroom with either a shower or a bath.

Services included

- A heated indoor pool (open all year)
- Wi-Fi in all the studios
- A gym

Additional services

- A hammam (5€/pers.)
- Breakfast (9€/pers.)
- Parking space (30€/week)
- Animals allowed

PRICES (ARRIVALS ON SUNDAYS - DEPARTURES ON SATURDAYS)

LOW SEASON - SEPTEMBER TO JUNE	
Studio/month	390 €
Studio/week	650 €
Extra Night	65 €
TOURIST TAX : 2.30 € / PERSON & PER DAY / ACCOMMODATION ADMIN FEE: 70 € / PERSON	

ACCOMMODATION

PERSONALISED ACCOMMODATION SERVICE



lingua is partners with the biggest estate agency in La Rochelle who have over 50 holiday apartments to let throughout the year, and 300 in the summer.

These places have been selected for:

- Their proximity to the school and the beach/centre of town
- Their comfort

You can find a form to fill out on our website which will enable you to list your requirements in regards to number of beds, rooms, location, services, and of course, dates.

In under 48 hours you will receive a list of apartments fitting your requirements with descriptions and photos from which you can choose. A deposit must then be paid within 8 days of confirming your booking.

Stays are from Saturday (4pm) to Saturday (12am), keys may be picked up from the agency near the school. If you arrive on a Sunday, we can organise a transfer and meet you with the keys to the apartment either at La Rochelle airport or train station. The service includes towels, linen, and cleaning upon departure.

PRICE RANGE PER WEEK

	LOW SEASON	JULY - AUGUST
Studios	200 - 250 €	280 - 420 €
T2 (1 bedroom)	250 - 320 €	360 - 540 €
T3 (2 bedrooms)	330 - 420 €	480 - 700 €
T4 (3 bedrooms)	450 - 570 €	650 - 960 €

ACCOMMODATION ADMIN FEE: € 70/PERSON

USEFUL INFORMATION



JUNIOR TRANSFERS

(PRICE PER TRIP)

NANTES AIRPORT	BORDEAUX AIRPORT
80 €	98 €

A member of the inlingua team will come to pick up the student from the airport when they arrive and take them to their place of accommodation

If several students arrive at similar times, we may ask them to wait for the next arrival with the group leader. In this case a meal will be provided if necessary.

FIRST DAY OF CLASSES

MONDAY MORNING

TIME OF ARRIVAL AT SCHOOL	START OF CLASSES
08:30	10:00

On the first day students are asked to come to the school at 8:30 for a presentation of the team, their programme, and the town. Breakfast, coffee, and fruit juices are served by inlingua.

An oral test in the form of a conversation with a teacher is organised for all the new students so we can put together the groups for the coming week.

Our online level test is vital as it helps us prepare the courses and the groups. We thank students to do this test at least two weeks before their arrival. This is even more important for course with level requirements (30+, 50+, Workshops, etc.).

INSURANCE - GLOBE PARTNER

STUDENTS COMING FROM WITHIN THE EU

DURATION	-36 ANS	DE 36 À 69 ANS
1 week	15 €	17,40 €
2 weeks	27 €	31,80 €
Monthly rate	36 €	42,60 €

STUDENTS COMING FROM OUTSIDE THE EU

1 week	19	22.20
2 weeks	35	41.40
Monthly rate	48	57

inlingua cannot sign up for insurance on your behalf, but we would be happy to walk you through the process.- visit our website for more details.

ACTIVITIES FOR ADULTS

ACTIVITY	PRICE
Sailing / Windsurfing	256 € / week
Gym Membership	From 20€ / week
Cookery Classes	60 €
Surfing lessons	50 €

These prices may change depending on the provider available.

GETTING TO LA ROCHELLE



Arrivals by train

The beautiful train station of La Rochelle is located in the heart of the city less than 10 minutes by bike or by car from inlingua. If you are using our personalised accommodation service, or staying in one of our partnered residences, a transfer can easily be organised for 30€.



Arrivals in Nantes or Bordeaux

Transfers from Nantes or Bordeaux airports to La Rochelle: from 50€

Taxi: From 230€

Trains: from 50€ (airport shuttle + train)

- 2 trains per day on average
- A shuttle service links the airport to the train station
- 4 buses per day on average

Arrivals in Paris

A transfer with a private driver can be organised from the airport to one of the train stations in Paris where students can jump on a train to La Rochelle.





ICELAND
Reykjavik



ESTIMATED PRICES FOR TRANSFERS

ADULT TRANSFERS	NANTES AIRPORT TO LA ROCHELLE	BORDEAUX AIRPORT TO LA ROCHELLE	PARIS AIRPORT TO LA ROCHELLE
Taxi one way	230 €	290 €	-
Train one way	50 €	50 €	90 €
Taxi + Bus	-	-	110 €
Taxi + Train	-	-	180 €

FROM LA ROCHELLE AIRPORT OR TRAIN STATION TO ACCOMMODATION: € 30



 inlingua La Rochelle/French Courses  inlinguaFR



 **inlingua**[®]
La Rochelle