

Heartland International English School

EXPERIENCE THE HEART OF CANADA!



WINNIPEG . MANITOBA . CANADA
www.sprachenmarkt.de, Tel: +49-711-45 10 17 370, service@sprachenmarkt.de

Winnipeg

“The Heart of Canada”

With a population of 715, 000, Winnipeg is one of the most livable cities in Canada and the world, making it the perfect destination for students to learn English. From our vibrant downtown, to our historic exchange district, our many cultural festivals, our vibrant arts scene and the exciting night-life, Winnipeg is one of the most diverse and exciting cities in North America. **Winnipeg is a premier destination with something to offer all students** including:

- One of the **most affordable and livable** cities in Canada
- **Safety** in one of the friendliest cities in Canada
- **Fewer international students** than other major cities in Canada
- **A diverse range** of shopping, restaurants, clubs and nightlife
- One of the **most vibrant arts scenes in Canada**, including art galleries, live music, theatre, and dance
- A variety of **recreational activities** and city parks nearby
- A short drive in all directions to the many lake regions that surround the city including one of **the top 10 beaches in all of Canada (Grand Beach)**

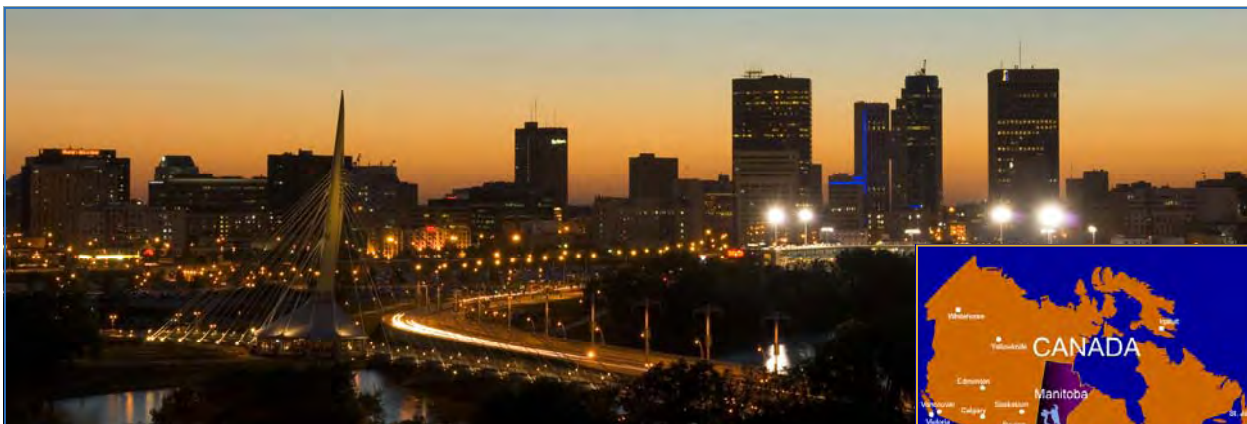


TOP 3 THINGS TO DO IN WINNIPEG

- Visit the famous Forks Marketplace and National Historic Site
- Walk around the Exchange District National Historic Site
- Attend one of the city's annual festivals, including Folklorama

POPULAR HEARTLAND ACTIVITIES

- Going camping for the weekend
- Watching a hockey, baseball or football game
- Ice skating on the Red River Trail



DID YOU KNOW...

- Winnipeg has 2,727 hours of clear skies on average per year, the highest of all Canadian cities.
- That Winnie the Pooh is named after Winnipeg and that the city has many tributes him.
- Winnipeg is home to the Canadian Museum of Human Rights which will open in 2012.
- Winnipeg is home to the world's longest ice skating river trail.

www.sprachenmarkt.de, Tel: +49-711-45 10 17 370, service@sprachenmarkt.de

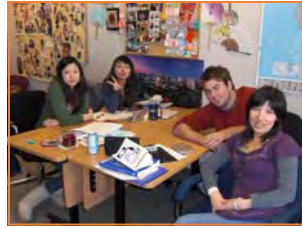


“Winnipeg
is one of the
friendliest
cities in all of
Canada”

At Heartland, we are dedicated to providing students with a world class learning experience...

Modern School Facilities

Heartland has bright and comfortable classrooms with a **capacity of 75 students** at any one time. We have **computers** and **wireless internet** throughout the building. We also have a **kitchen and eating area** for students along with a **media lounge** that has a big screen for students to relax in after class and watch videos and movies.



"I love you all. I've never thought that I would be so happy in this place. Thank you for teaching me, for being my friends."

Natalia Haidamus
Brazil



Our Approach to Student Learning

We strive to provide the best English as a Second Language training in Canada. We do this by having:

- *A comprehensive curriculum;*
- *professional & dedicated teachers and staff;*
- *modern, clean facilities and equipment;*
- *friendly and caring host families; and*
- *the perfect city for learning English.*

Student's First Day

We try to make all students feel comfortable and welcome at Heartland International English School. Here is what students can expect for their first day at Heartland:

8:45 a.m.	—	Students arrive at school
9:00—10:45 a.m.	—	Placement test (language level assessment)
10:45—11:00 a.m.	—	Break
11:00—12:00 p.m.	—	Student orientation (school information and tour of neighbourhood)
12:00—1:00 p.m.	—	Lunch break
1:00-3:00 p.m.	—	Students join classes based on their level
3:15—5:15 p.m.	—	IELTS Preparation (Super-Intensive Program only)

English Programs

General Information

Heartland's English Programs are comprehensive English as a Second Language (ESL) programs for international learners. Heartland offers ESL programs to suit your learning needs - from beginner to advanced levels. All courses have small classes for maximum student participation.

The Intensive English Program is a **flexible** ESL program focusing on **improving your English ability**.

- Start any Monday and study any length of time (from one week to one year, or longer)
- Classes Monday to Friday
- Part-time and full-time options available (Semi-Intensive 15 hrs/wk, Intensive 25 hrs/wk or Super-Intensive 33 hrs/wk)
- Basic to advanced level instruction with a focus on all skills: reading, writing, listening and speaking
- Students are placed in appropriate level based on the placement test on the first day of classes
- Small classes for maximum student participation -- Maximum 15 students, average 10-12 students per class
- Weekly activities organized to allow students to use their English in a variety of real situations outside of the school

Class Schedule

	Monday	Tuesday	Wednesday	Thursday	Friday	Program							
9:00–12:00	Morning Class (multi-skill classes, based on level) Break 10:30 to 10:45					S e m i - i n t e n s i v e	I n t e n s i v e	S u p e r I n t e n s i v e					
12:00-1:00									Lunch Break				
1:00-3:00									Reading	Listening	Writing	Speaking	Activity, Movie or Tutorial
3:15-5:15	IELTS Preparation Class												

Study And Work Program

Heartland's Study and Work Program is an exciting opportunity for students to apply their classroom knowledge to a general work environment in a Canadian company. Students gain valuable work experience and have an opportunity to practice English and learn about Canadian culture.

Study and Work Program:

The Study and Work Program is comprised of classroom study with specific language training for the customer service industry. The work experience is an integral part of this program and mandatory for completion of the program. The Study and Work Program meets industry standards and the practicum hours make up less than or equal to 50% of the total program.

Program Requirements:

- Minimum Age : 18 years old
- Must study for a minimum of 24 weeks
- The length of work has to be equal to or less than your study period
- Must be able to reach specified level of English before the start of the work portion
- Student must obtain the student and work permit before entering the country
- Student must agree to the terms and conditions of our program
- The work must be an integral part of the academic program (work must be in English)

What we provide to the student:

- Resume & cover letter review and editing
- Interview skills preparation
- Resume faxing service
- Job search skills and techniques
- Assistance with job search, but cannot guarantee job placement

*** We do not charge a Placement Fee, its FREE!**



"In my internship I was able to design a promotional button for my company. I also prepared and applied a survey in Heartland to learn about environmental problems. The program was great because you learn English and working at the same time while getting to know the systems of Canada"

Elizabeth de Jesus Meza Carlos
Mexico



**Please enquire with a Heartland representative for more information about our Study and Work Program*
www.sprachenmarkt.de, Tel: +49-711-45 10 17 370, service@sprachenmarkt.de

Accommodations

HOMESTAY PROGRAM

Homestays enable you to live in a Canadian home. This allows you to learn English in a natural setting. It will also help you to adjust quickly and provide you with a better understanding of Canadian culture. This option can be very rewarding if you are open and willing to adjust to a new environment.

Homestays include: a private room, shared bathroom, 3 meals per day and free airport pickup.

OUR HOMESTAY PROMISE

- Each homestay is inspected and conforms to Heartland's high quality standards.
- Students are placed in homes according to their preferences and needs.
- Each family speaks English with students in their home.
- Homestays provide a private room with clean sheets and towels.
- Families provide food for breakfast, lunch and dinner daily.
- Homes are within a close and convenient bus ride to school.



"We accept students into our homes, and they become family. When they leave, we miss them a lot, but know we'll always stay in touch".

RESIDENCE OPTIONS

Living in a residence gives students the opportunity to live together with university students – enjoying more independence plus the chance to make new friends. It includes renting a room and purchasing a meal plan. Heartland does not have its own residence but has university and college partners that provide space for our students throughout the year. All residences are close to the school. The residences available are:

University of Winnipeg Residence (McFeetors Hall)

Recently opened in 2009, McFeetors Hall (below) is a brand new, modern residence with single and double dorms available.



William and Catherine Booth College

College residence located in city centre across from the University of Winnipeg, run by the Salvation Army. The residence is directly associated with the William and Catherine Booth College, a Christian College.



AIRPORT PICK UP SERVICE—FREE (If students stays in Heartland accommodations)

When you arrive in Winnipeg, you will be met by a friendly face at the airport. We are one of the only schools in Canada to offer **free airport pick up**. We will meet you at the airport and bring you safely to your accommodations. Look for the Heartland staff member holding a sign with your name on it and say "hello".

Activities

At Heartland we provide our students with a calendar of activities every month ranging from sightseeing to sporting events, concerts, barbecues, movies, dancing, nightclubs, bowling, and more! These activities are designed to give the students a chance to practice their English in real situations and provide the students with a well-rounded experience in Canada. Read more about some exciting activities below!

"There are tons of fun things to do in Winnipeg and outside the city"



SIGHTSEEING

In the city take a trip to the Forks Market, tour the Manitoba Legislature Building, go to the Winnipeg Art Gallery or take a walking tour of the historic Exchange District!



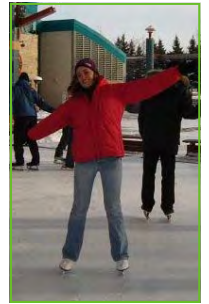
SPORTING EVENTS

Help to cheer on Winnipeg's professional sports teams the Winnipeg Goldeyes (baseball), the Winnipeg Jets (ice hockey) and the Winnipeg Blue Bombers (football). We also have our own sports activities including volleyball and soccer.



TRIPS & TOURS

We encourage our students to take advantage of the variety of nature activities just outside the city. Spend the weekend camping in the Whiteshell Provincial Park and experience canoeing, fishing and wildlife, or take a winter ski trip to Assinippi Ski Area and Resort.



Heartland FAQ's

Who studies at Heartland?

At Heartland, we have a minimum age of 16 years old but most of our students are over 18. On average about 80% of our students are in their twenties. If you are interested in a school that has mature and like minded students, then Heartland is a great choice.



What are your homestay families like?

At Heartland we take great pride in making sure that each of our students has the best experience possible, which includes their homestay. Each one of our approved homestay families and their homes goes through a rigorous process which includes:

- An interview
- Personal home inspection
- Reference checks
- Criminal record checks

What is your nationality mix?

Last year, our breakdown was as follows:

Korean 22%
Japanese 15%
Saudi Arabian 12%
Brazilian 11%
Mexico 9%
Taiwanese 7%
Columbian 4%
German 3%
Swiss 3%
Other (25 Countries) 14%



One of Canada's most diverse nationality mixes!

How many students are there per class?

We allow a maximum of 15 students per class, but the average class size is 10-12 students. Our small classes allow for each student to participate and receive the teachers full attention.

I have never worked with you before, so how can I be sure Heartland is a quality school?

Our Promise to our agents and our students has been the same since the first student walked through our doors in 1999, *to strive to provide the best ESL training in Canada*. We have welcomed over 2500 students from 55 countries so our longevity proves our high quality standards. Additionally, we have been accredited by Languages Canada which is bestowed to only the top English schools in Canada!

Why should students choose Heartland?

Heartland is the ONLY private English school in Winnipeg. When we ask our students why they chose our school here is what they say:

- It is very high quality and very affordable for me
- I can focus on learning English in a smaller city
- My teachers are very experienced and are my friends
- It is a great school to improve your conversation skills
- Winnipeg is so great, there are so many fun things to do!
- **Heartland is a family and it feels like Home!**

What is the public transportation system?

Winnipeg has an efficient public bus system called Winnipeg Transit.



“ I have made so many friends at Heartland from all over the world”

School Policies

Attendance Policy

- Class hours are from 9:00 am to 3:00 pm. Students must be in their class by 9:15am at the latest. Students arriving after 9:15am must wait until the morning break to join the class.
- Classes take a break for 15 minutes each morning from 10:30 to 10:45 am. Students are expected to return to class promptly after the morning break.
- If a student misses more than 3 hours per week, he or she must meet with his or her teacher and the Director of the school.
- Lateness and absence can be excused if the student notifies the school beforehand and provides a reasonable excuse for the lateness or absence.

Break Policy

Students may take breaks while studying in the Intensive English Program at Heartland. To be eligible for a tuition credit or refund, students must:

- Notify the school at least 1-week in advance.
- Take a break for a minimum of 5 school days.
- Provide a reasonable excuse for taking a break.



Refund Policy

- All application fees, placement fees and bank fees are non-refundable.
- If a student authorization is denied, the school will refund all fees (except for application, placement and bank fees).
- If a student withdraws (or is dismissed) from the Intensive English Program after the start of his or her program, the school will refund 50% of the tuition fees that have been paid, but not used.
- To apply for a refund, the student must submit a written notice of withdrawal to the school. Please complete and submit a Refund Request Form at least 2 weeks in advance.
- Refunds owing to the students will be paid within 14 days of receiving written notification of withdrawal.

English-Only Policy

To create the best possible learning environment for students, we have an English-only policy at Heartland. This policy helps students improve their English quickly and makes students from all countries feel comfortable with each other.

English-Only Policy Rules:

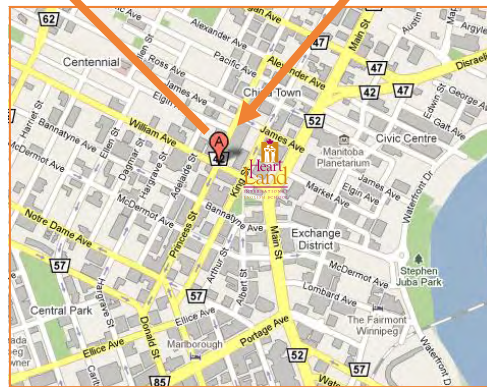
- Students must only speak English at the school at all times.
- The punishment – If a student is caught speaking a language other than English she or he will be asked to leave the school immediately. The student will not be able to return for the remainder of the day.
- Repeat offenders may be dismissed from their program.

Medical Insurance Policy

It is **mandatory** that all students have medical insurance. Insurance can be purchased from Heartland for \$2 per day. If insurance is not purchased from Heartland, the student must show proof of medical coverage.

Contact Information

Heartland International English School



ACCREDITATIONS AND ORGANIZATIONS



www.sprachenmarkt.de, Tel: +49-711-45 10 17 370, service@sprachenmarkt.de