

BRIGHTON PALACE PIER



Accredited by the
BRITISH COUNCIL
for the teaching
of English

www.sprachenmarkt.de, Tel: +49-711-12 85 15 40, service@sprachenmarkt.de

blic international
school of english
adult courses 2025



"Welcome to BLC International in the heart of our city. BLC's lively, modern, inclusive and vibrant approach to language learning gives you the best platform to build your confidence and ability in English. I look forward to meeting you here in Brighton."



Brighton

Our exciting city

Brighton is one of the most cosmopolitan cities in the UK and located just 50 minutes from central London by train. It has much of what London has to offer; a significant difference being that Brighton is a seaside resort city.

Brighton is the UK's most popular seaside destination and a truly exciting city with its own identity. Brighton is a unique, upmarket and welcoming place mixing historic buildings, diverse nightlife, trendy boutiques, a rich theatrical and music scene, fabulous clubs and bars, family entertainment, eclectic shopping, 2 universities and a beach front which is one of the most visited in the UK. Not only that, but with the beautiful South Downs National Park close by, offering stunning scenery.

Brighton is famous for the Royal Pavilion; the home of King George IV (The Prince Regent) which he often visited as a holiday destination leading a luxurious lifestyle. Since the eighteenth century, Brighton has had the reputation for being a relaxed and vibrant city. Londoners have been travelling to Brighton and the beach ever since the railway arrived in 1841 to bathe in the sea and they still do today to get away from the pressures of city life. Brighton Palace Pier and the Royal Pavilion are the main sights, but you will also find hundreds of pubs and clubs attracting an energetic crowd. The city is now also home to the Brighton i360, the world's thinnest moving observation tower (162m) with views along the coast, across the South Downs and across the English Channel.

Brighton comes alive when the sun is shining; people fill the streets and visit the beach at every opportunity. Brighton is one of the lead cities in the UK to host a Pride festival, a celebration to promote equality and diversity (LGBTQ+). The major event

is an annual summer festival held in the first week of August which consists of a parade through the city centre, an event in Preston Park and the Kemp Town Village Party with major artists performing.

For a quieter place in the sun, go west along the seafront towards Hove and pass the old West Pier (Brighton's ghostly pier that caught on fire in 2003). Brighton is an all-season city and even though it can be crowded on a hot summer's day, it is still very busy all year round.

If the city-life is too much for you, you can always have a break in the fabulous South Downs National Park. Just take a bus or train and in 20 minutes you can be walking in the countryside or a historic town enjoying some of the most beautiful coastline views England has to offer.

If you like football, then you can visit the American Express Stadium and watch Brighton and Hove Albion (also known as "The Seagulls") who play in the premier league. In 2023/2024 Brighton & Hove Albion also qualified for their first UEFA Europa League campaign, they came first in their group and advanced to the knockout phase.

Whatever it is you are looking for to complement your studies and free time, Brighton has a lot to offer.

Please take a look at some of the events happening in 2025 below.

2025 events in Brighton

March	Sussex Beer & Cider Festival, Vegetarian Festival
April	Brighton Marathon, Brighton Food and Drink Festival
May	Brighton Arts Festival, The Great Escape Music Festival
June	World Naked Bike Ride, London to Brighton Bike Ride
August	Brighton Food and Drink Festival, Pride Festival
September	Women's Rugby World Cup, Chilli Festival, Colour Run
October	Brighton Comedy Festival
November	Lewes Bonfire Night, Royal Pavilion Ice Rink (Nov/Dec)
December	Christmas Markets, Burning of the Clocks



Seven Sisters



Burning of the Clocks



Brighton Arts Festival



Lewes Bonfire Night



Women's Rugby World Cup

Student Services

Helping students

Homestay Accommodation

Live in an English-speaking household and learn as you live together, a unique opportunity to improve fluency and experience our culture first hand. A variety of room options are available for you to choose between and you can also eat together with your hosts every morning and evening. BLC International homestays are 25–50 minutes away from our city centre school by public transport.

Each homestay provides a different experience of British life where you are welcomed as part of the family. All our homestays are carefully checked by our Accommodation Officers who are available at all times if you need any help while you are here.

Special dietary needs can be catered for (vegan, celiac, lactose free etc.) for a supplement.

BLC Homestay

Single/twin rooms
Carefully selected welcoming hosts
Half board or breakfast only
Excellent value for money
Practise your English at home
Private bathroom options
Registered homestay providers with the college

Private Accommodation

BLC International can advise on finding private accommodation with a number of recommended agencies, hotels or hostels in the city. Please remember that if you choose to arrange private accommodation you will not have the benefits of everyday communication and language use your homestay provides.

Public Holidays

BLC International is closed on all UK Public Holidays except Easter (18.04.25 - 21.04.25). In such cases new students will start on the Tuesday if the Public Holiday is a Monday.

School Closure Dates 2025

- » 23.12.24 - 03.01.25
- » 05.05.25
- » 26.05.25
- » 25.08.25
- » 22.12.25 - 02.01.26

Student Welfare

At BLC International we provide a complete welfare package so you have everything you require for a successful and memorable period of study. Our Welfare Officer ensures that you have a safe and enjoyable experience in Brighton and will provide you with all the information you need to maximise your stay here with us.

Please see the links below:

- [Safeguarding Policy](#)
- [Supervision Policy](#)
- [Emergency & Critical Incident Plan](#)
- [Pre-Arrival Guide](#)

On day 1 you will receive:

A warm welcome, induction and orientation
An introduction to our team
Information on Brighton, the college, areas of interest and our facilities
Free Super Fast Wi-Fi (70 Mbps) access
Out of hours hot line phone number
An exciting and active social programme so you can make new friends
BLC International student ID card

Social Programme

BLC International looks after your language training and it is also our mission for you to have a great time outside of class relaxing, using the language you have learned and communicating with other students and local people in your free time. We organise many events and work with many local events organisers for special prices and are always here to help you book trips around the UK or provide you with advice.

Example Social Activities (seasonal)

Cinema Evenings
Paris Weekend
West End Musicals
Concerts
Premier League Football
Beach Volleyball
Pottery Classes
International Student Nights
Bowling
Pub Quiz
Basketball
London Excursions
Lazer Zone
Beach Barbecues
Nature walks
Cream Teas

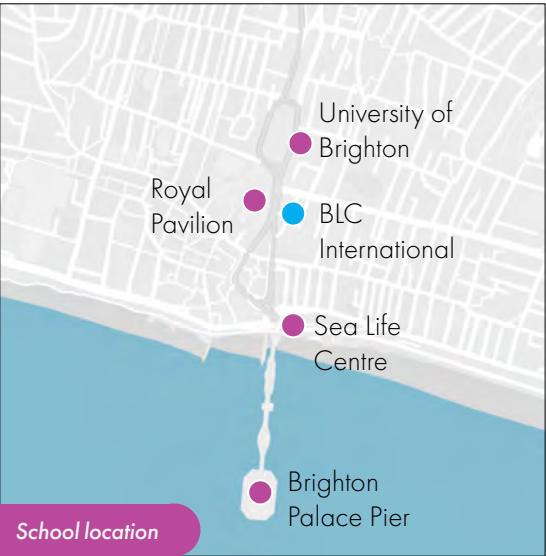
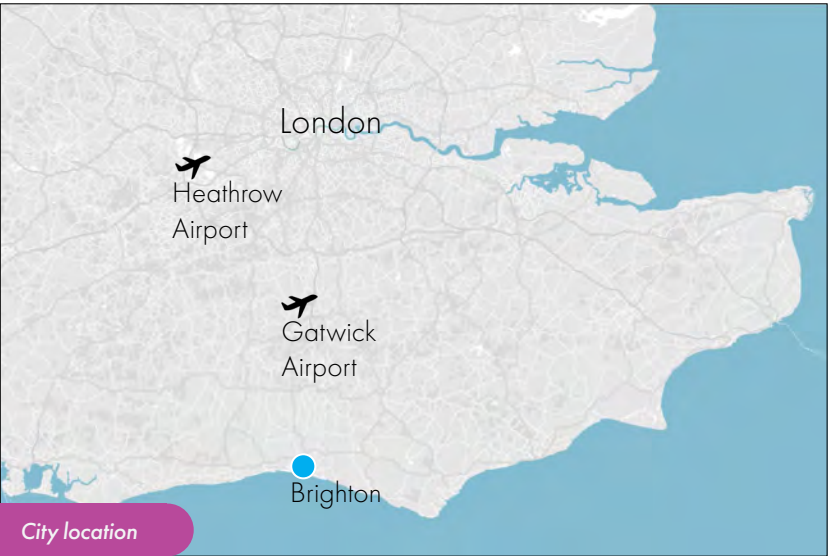
Airport Transfer Service

BLC International can arrange private taxi transfers to take you directly to your accommodation on arrival and back to the airport on your departure.



Key Information

Local facts & figures



Classes

Maximum Class Sizes:	Minimum Ages:	Lesson Length:
General English 16	General English 16	1 lesson 45 minutes
IELTS Academic Test Preparation 16	IELTS Academic Test Preparation 16	20 lessons 15 hours
Cambridge B2 First (FCE) 10	Cambridge B2 First (FCE) 16	26 lessons 19.5 hours
Cambridge C1 Advanced (CAE) 10	Cambridge C1 Advanced (CAE) 16	29 lessons 22.75 hours
Skills 16	Skills 16	32 lessons 24 hours
English & Culture 50+ 8	English & Culture 50+ 50	

Nationality Mix (adult tuition)

A mix of over 45 other nationalities 30%
Germany 18%
Italy 14%
Switzerland 10%
Saudi Arabia 7%
Spain 7%
Thailand 6%
South Korea 4%
Turkey 4%

*Data provided is for 2023

Age Mix

18 - 20 33%
21 - 30 28%
31 - 40 13%
41 - 50 12%
51 - 60 11%
61+ 3%

Gender Mix

Female 58%
Male 42%



Facilities

School and environment

Background

Brighton Language College International was established in 1995 and relocated to new premises in 2015 with modern facilities and classrooms covering 6 colour coded floors and over 1000m². The school is situated in the city centre opposite the Royal Pavilion and only 2 minutes walk from the beach and Brighton Palace Pier & Sea Life Centre.

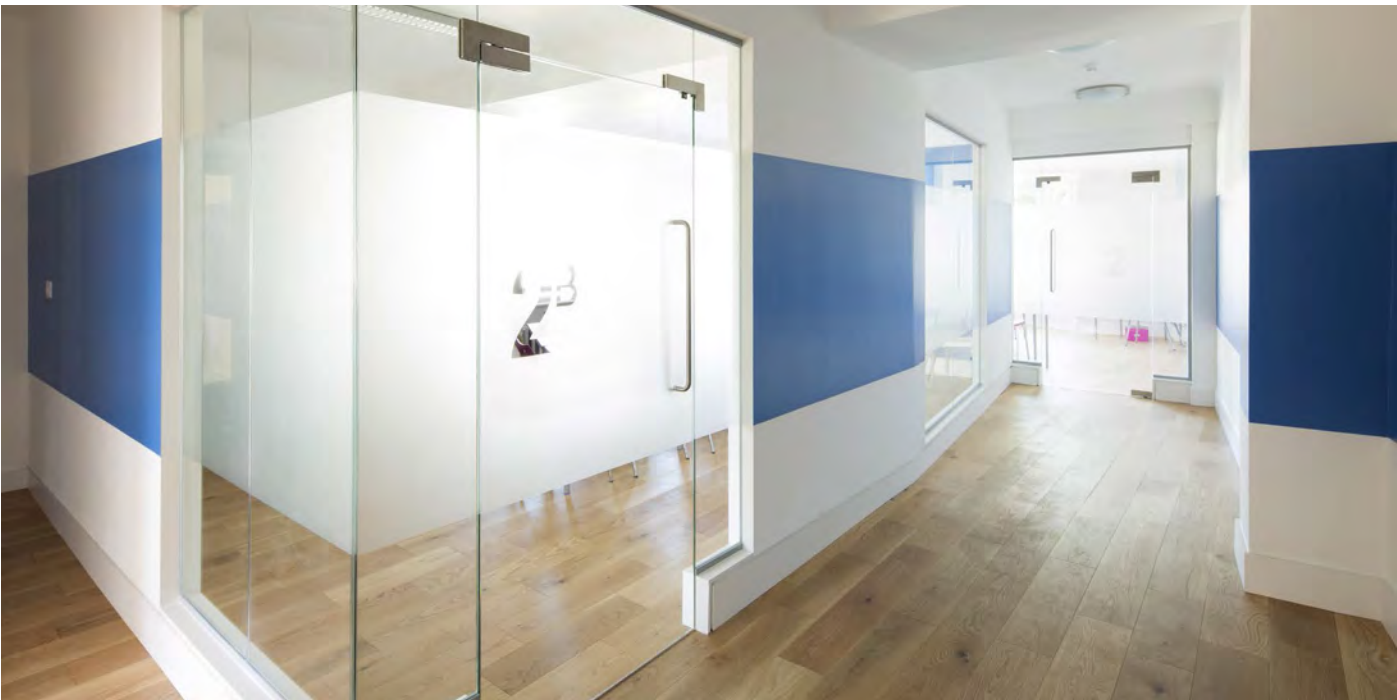
You are in the heart of the city each day of your studies, meaning you have all the benefits of Brighton's superb restaurants, beaches, night life, shops, entertainment and unique lifestyle in the UK's trendiest resort city.

BLC International operates from 2 buildings, 7 and 12 Old Steine. 7 Old Steine is actually 3 buildings connected together (5-7 Old Steine).

School Floor Guide - 7 Old Steine

- 6 4th Floor: one to one classrooms / large group classrooms / small group classrooms
- 5 3rd Floor: large group classrooms / small group classrooms
- 4 2nd Floor: large group classrooms / small group classrooms
- 3 1st Floor: Offices / teaching resource centre / large group classrooms
- 2 Ground Floor: Reception / large group classrooms / small group classrooms / patio
- 1 Underground: Student lounge

- Free Super Fast Wi-Fi (70 Mbps)
- City centre school
- Reception / information desk
- Student lounge & patio
- Welfare & counselling service
- Airport Transfer service
- Accommodation service
- Royal Pavilion views
- 35 Classrooms



Your progression

Your level of English

Our Courses

Courses taught at Brighton Language College International improve your English ability. Our teachers will tailor the course for your level.

To help you assess your level, we have a free English level test on our website. We teach 5 levels of English A2 - B1 / B1+ - C1 and 6 levels A1 - B1 / B1+ - C1 during high season (June - August).

English Language Levels

All of our courses follow the Common European Framework Reference for Languages (CEFR).

Every course page lists the level the course is suitable for and many of our courses are available for all levels (you will be placed in a class with people of a similar level to you).

Pre-Arrival Test

All students on an adult course must take a pre-arrival test before arrival. Tests must be taken and completed one week prior to arrival.

If a pre-arrival test has not been completed prior to arrival, then your first day will consist of a test and your first day of class may commence on the next day.

CEFR	CEFR Terminology	Cambridge	IELTS	You can...	You can...	You can...
C2	Mastery	C2 Proficiency	8.5 - 9.0	Understand with ease virtually everything heard or read	Summarise information from different spoken and written sources, reconstructing arguments and accounts in a coherent presentation	Express yourself spontaneously, very fluently and precisely, differentiating finer shades of meaning even in the most complex situations
C1	Advanced	C1 Advanced	7.0 - 8.0	Understand a wide range of demanding, longer texts, and recognise implicit meaning	Express yourself fluently and spontaneously without much obvious searching for expressions	Use language flexibly and effectively for social, academic and professional purposes
B2	Vantage	B2 first	5.5 - 6.5	Understand the main ideas of complex text on both concrete and abstract topics.	Interact with a degree of fluency and that makes interaction with native speakers possible without strain for either party	Produce clear, detailed text on a wide range of subjects and be able to explain viewpoints on topical issues
B1	Threshold	B1 Preliminary	4.0 - 5.0	Understand the main points of clear standard input on familiar matters regularly encountered in work, school, leisure, etc	Produce simple connected text on topics which are familiar or of personal interest	Describe experiences, events, hopes and ambitions. Briefly give reasons and explanations for opinions and plans
A2	Waystage	A2 Key	-	Communicate routine tasks requiring on familiar and routine matters	Understand basic sentences and expressions on personal and family information, shopping, local geography, employment	Describe in simple terms aspects of your background, environment & matters in areas of immediate need
A1	Breakthrough	A1 Movers	-	Understand and use familiar expressions and very basic phrases	Interact in a simple way if the other person talks slowly and clearly and is prepared to help	Introduce yourself, ask and answer questions about where you live, people you know



General English

General English courses run throughout the year. The course is designed to increase your English level through a syllabus which concentrates on listening, reading, speaking and writing. With the text book grammar and vocabulary is learned to consolidate your studies. Afternoon options cover further skills focussed training, business english lessons or private tuition. *A1 students are welcome June - August.

Start Dates	Course Levels	Maximum Class Size	Minimum Course Length	Minimum Age
Every Monday	A2 - C1 (A1 - C1 summer)	16 (10 average)	1 week	16 (23 average)

English 20

Lessons per week:	20	AM Schedule:	09:15 - 12:30
Hours per week:	15	AM Content:	General English
Course Book:	Included (1)	PM Schedule:	N/A
Course Code:	E20	PM Content:	N/A

English 20 + Skills 6

Lessons per week:	26	AM Schedule:	09:15 - 12:30
Hours per week:	19.5 (15 + 4.5)	AM Content:	General English
Course Book:	Included (1)	PM Schedule:	13:30 - 16:00 (Mon & Wed or Tue & Thu)
Course Code:	E26	PM Content:	Skills - Speaking / Listening

English 20 + Skills 9

Lessons per week:	29	AM Schedule:	09:15 - 12:30
Hours per week:	21.75 (15 + 6.75)	AM Content:	General English
Course Book:	Included (1)	PM Schedule:	13:30 - 16:00 (Tue-Wed-Thu)
Course Code:	E29	PM Content:	Skills - Speaking / Listening

English 20 + Skills 12

Lessons per week:	32	AM Schedule:	09:15 - 12:30
Hours per week:	24 (15 + 9)	AM Content:	General English
Course Book:	Included (1)	PM Schedule:	13:30 - 16:00 (4 days / week)
Course Code:	E32	PM Content:	Skills - Speaking / Listening



Schedule	Lessons	Hours	09:15 - 10:00	10:00 - 10:45	11:00 - 11:45	11:45 - 12:30	12:30 - 13:30	13:30 - 14:15	14:15 - 15:00	15:15 - 16:00
E20	20	15	General English	General English	General English	General English	-	-	-	-
E26	26	19.5	General English	General English	General English	General English	-	Skills*	Skills*	Skills*
E29	29	21.75	General English	General English	General English	General English	-	Skills**	Skills**	Skills**
E32	32	24	General English	General English	General English	General English	-	Skills***	Skills***	Skills***

Courses run Monday to Friday (Afternoons Monday to Thursday) / 1 lesson = 45 minutes
* 2 days/wk ** 3 days/wk *** 4 days/wk



IELTS Academic Test Preparation

IELTS is a popular and well recognised examination taken by students who plan to enrol onto higher education programmes. Many professional organisations worldwide and an increasing number of universities accept IELTS as proof of language ability. Morning tuition can be supplemented with further IELTS tuition or other options.

Start Dates	Minimum Course Level	Maximum Class Size	Minimum Course Length	Minimum Age
Every Monday	B1	16 (10 average)	2 weeks	16 (23 average)

IELTS 20

Lessons per week:	20	AM Schedule:	09:15 - 12:30
Hours per week:	15	AM Content:	IELTS Preparation
Course Book:	Included	PM Schedule:	N/A
Course Code:	I20	PM Content:	N/A

IELTS 20 + Skills 6

Lessons per week:	26	AM Schedule:	09:15 - 12:30
Hours per week:	19.5 (15 + 4.5)	AM Content:	IELTS Preparation
Course Book:	Included	PM Schedule:	13:30 - 16:00 (Mon & Wed or Tue & Thu)
Course Code:	IE26	PM Content:	Skills - Speaking / Listening

IELTS 20 + Skills 9

Lessons per week:	29	AM Schedule:	09:15 - 12:30
Hours per week:	21.75 (15 + 6.75)	AM Content:	IELTS Preparation
Course Book:	Included	PM Schedule:	13:30 - 16:00 (Tues-Wed-Thu)
Course Code:	IE29	PM Content:	Skills - Speaking / Listening

IELTS 20 + Skills 12

Lessons per week:	32	AM Schedule:	09:15 - 12:30
Hours per week:	24 (15 + 9)	AM Content:	IELTS Preparation
Course Book:	Included	PM Schedule:	13:30 - 16:00 (4 days / week)
Course Code:	IE32	PM Content:	Skills - Speaking / Listening



Schedule	Lessons	Hours	09:15 - 10:00	10:00 - 10:45	11:00 - 11:45	11:45 - 12:30	12:30 - 13:30	13:30 - 14:15	14:15 - 15:00	15:15 - 16:00
I20	20	15	IELTS Preparation	IELTS Preparation	IELTS Preparation	IELTS Preparation	–	–	–	–
IE26	26	19.5	IELTS Preparation	IELTS Preparation	IELTS Preparation	IELTS Preparation	–	Skills*	Skills*	Skills*
IE29	29	21.75	IELTS Preparation	IELTS Preparation	IELTS Preparation	IELTS Preparation	–	Skills**	Skills**	Skills**
IE32	32	24	IELTS Preparation	IELTS Preparation	IELTS Preparation	IELTS Preparation	–	Skills***	Skills***	Skills***

Courses run Monday to Friday (Afternoons Monday to Thursday) / 1 lesson = 45 minutes
* 2 days/wk ** 3 days/wk *** 4 days/wk





Cambridge

B2 First

The B2 First qualification proves you have the language skills to live and work independently in an English-speaking country or study on courses taught in English. This qualification enables you to communicate effectively face-to-face, expressing

opinions and presenting arguments. Core exam tuition can be supplemented with a variety of afternoon classes to focus on your learning aims.

Start Dates	Minimum Course Level	Maximum Class Size	Minimum Course Length	Minimum Age
Every Monday	B1+	10 (5 average)	2 weeks	16 (23 average)

B2 First 20

Lessons per week:	20	AM Schedule:	09:15 - 12:30
Hours per week:	15	AM Content:	B2 First
Course Book:	Included	PM Schedule:	N/A
Course Code:	F20	PM Content:	N/A

B2 First 20 + Skills 6

Lessons per week:	26	AM Schedule:	09:15 - 12:30
Hours per week:	19.5 (15 + 4.5)	AM Content:	B2 First
Course Book:	Included	PM Schedule:	13:30 - 16:00 (Mon & Wed or Tue & Thu)
Course Code:	FE26	PM Content:	Skills - Speaking / Listening

B2 First 20 + Skills 9

Lessons per week:	29	AM Schedule:	09:15 - 12:30
Hours per week:	21.75 (15 + 6.75)	AM Content:	B2 First
Course Book:	Included	PM Schedule:	13:30 - 16:00 (Tue-Wed-Thu)
Course Code:	FE29	PM Content:	Skills - Speaking / Listening

B2 First 20 + Skills 12

Lessons per week:	32	AM Schedule:	09:15 - 12:30
Hours per week:	24 (15 + 9)	AM Content:	B2 First
Course Book:	Included	PM Schedule:	13:30 - 16:00 (4 days / week)
Course Code:	FE32	PM Content:	Skills - Speaking / Listening

Exam dates 2025

14th March 2025
31st May 2025
24th July 2025
21st August 2025
25th November 2025



Schedule	Lessons	Hours	09:15 - 10:00	10:00 - 10:45	11:00 - 11:45	11:45 - 12:30	12:30 - 13:30	13:30 - 14:15	14:15 - 15:00	15:15 - 16:00
F20	20	15	B2 First	B2 First	B2 First	B2 First	—	—	—	—
FE26	26	19.5	B2 First	B2 First	B2 First	B2 First	—	Skills*	Skills*	Skills*
FE29	29	21.75	B2 First	B2 First	B2 First	B2 First	—	Skills**	Skills**	Skills**
FE32	32	24	B2 First	B2 First	B2 First	B2 First	—	Skills***	Skills***	Skills***

Courses run Monday to Friday (Afternoons Monday to Thursday) / 1 lesson = 45 minutes
* 2 days/wk ** 3 days/wk *** 4 days/wk





Cambridge C1 Advanced

Our University of Cambridge C1 Advanced examination course prepares you with the necessary skills to pass the internationally recognised qualification. The course looks at past examination papers and focus on exam techniques and covers writing, reading, listening and speaking together with grammar. Core exam tuition can be supplemented with a variety of afternoon classes.

Start Dates	Minimum Course Level	Maximum Class Size	Minimum Course Length	Minimum Age
Every Monday	B2	10 (5 average)	2 weeks	16 (23 average)

C1 Adv 20

Lessons per week:	20	AM Schedule:	09:15 - 12:30
Hours per week:	15	AM Content:	C1 Advanced
Course Book:	Included	PM Schedule:	N/A
Course Code:	C20	PM Content:	N/A

C1 Adv 20 + Skills 6

Lessons per week:	26	AM Schedule:	09:15 - 12:30
Hours per week:	19.5 (15 + 4.5)	AM Content:	C1 Advanced
Course Book:	Included	PM Schedule:	13:30 - 16:00 (Mon & Wed or Tue & Thu)
Course Code:	CE26	PM Content:	Skills - Speaking / Listening

C1 Adv 20 + Skills 9

Lessons per week:	29	AM Schedule:	09:15 - 12:30
Hours per week:	21.75 (15 + 6.75)	AM Content:	C1 Advanced
Course Book:	Included	PM Schedule:	13:30 - 16:00 (Tues-Wed-Thu)
Course Code:	CE29	PM Content:	Skills - Speaking / Listening

C1 Adv 20 + Skills 12

Lessons per week:	32	AM Schedule:	09:15 - 12:30
Hours per week:	24 (15 + 9)	AM Content:	C1 Advanced
Course Book:	Included	PM Schedule:	13:30 - 16:00 (4 days / week)
Course Code:	CE32	PM Content:	Skills - Speaking / Listening

Exam dates 2025

8th March 2025
4th June 2025
25th July 2025
22nd August 2025
26th November 2025



Schedule	Lessons	Hours	09:15 - 10:00	10:00 - 10:45	11:00 - 11:45	11:45 - 12:30	12:30 - 13:30	13:30 - 14:15	14:15 - 15:00	15:15 - 16:00
C20	20	15	C1 Advanced	C1 Advanced	C1 Advanced	C1 Advanced	-	-	-	-
CE26	26	19.5	C1 Advanced	C1 Advanced	C1 Advanced	C1 Advanced	-	Skills*	Skills*	Skills*
CE29	29	21.75	C1 Advanced	C1 Advanced	C1 Advanced	C1 Advanced	-	Skills**	Skills**	Skills**
CE32	32	24	C1 Advanced	C1 Advanced	C1 Advanced	C1 Advanced	-	Skills***	Skills***	Skills***

Courses run Monday to Friday (Afternoons Monday to Thursday) / 1 lesson = 45 minutes
* 2 days/wk ** 3 days/wk *** 4 days/wk
www.sprachenmarkt.de, Tel: +49-711-12 85 15 40, service@sprachenmarkt.de



Seven Sisters



Cream Tea



Brighton i360

English & Culture 50+

This course combines 20 cultural lessons with like-minded students that want to develop their English and explore British culture. Lessons & activities are with other 50+ course students wanting to explore South East England.

Activities vary depending on the season you choose. These are comprised of 4 after class cultural activities and excursions each week including a welcome meal and a Saturday excursion on the middle weekend.

Start Dates	Course Levels	Class Size	Course Length	Minimum Age
See below	B1+ to C1*	8 (5 average)	1 - 2 weeks	50

English & Culture 50+



Lessons per week:	20	Course Dates 2025:	31.03 - 11.04 / 02.06 - 13.06
Hours per week:	15		11.08 - 22.08 / 22.09 - 03.10
Course Materials:	Included	AM Schedule:	09:15 - 12:30
Course Code:	HP	AM Content:	English & Culture
		PM Schedule:	13:15 - 16:30
		PM Content:	Cultural activities & excursions

*English & Culture class content students must be B1+

* Students who are A1/B1 level join our English 20 courses in the morning and then take part in the cultural activities and excursions together.

Example Activities & Excursions

- » Arundel Castle & gardens
- » Rottingdean village cream teas
- » Lewes Castle & gardens
- » Thames cruise & London sightseeing
- » Chichester Cathedral
- » Theatre Royal Brighton
- » Seven Sisters country park
- » Royal Pavilion & Brighton Dome



Thames River Cruise

Schedule	Monday	Tuesday	Wednesday	Thursday	Friday	Saturday	Sunday
09:15 – 12:30	English & Culture	English & Culture	English & Culture	English & Culture	English & Culture	London Tour and River Cruise (1st weekend)	Arrival / Departure Free Day
12:30 – 13:15	Lunch	Lunch	Lunch	Lunch	Lunch		
Week 1	Welcome Meal	Arundel Castle	Cream Tea	Seven Sisters	-		
Week 2	Chichester	Lewes Castle	Royal Pavilion	Brighton i360	-		

Activities are an example only, schedules are confirmed each week and published on site
Courses run Monday to Friday / 1 lesson = 45 minutes (breaks 10:45 – 11:00 / 12:30 – 13:15)



blc
international

7 Old Steine, Brighton
BN1 1EJ, United Kingdom

www.sprachenmarkt.de, Tel: +49-711-12 85 15 40, service@sprachenmarkt.de