



PARIS

ACCOMMODATIONS BOOKLET 2026





ACCOMMODATIONS BOOKLET 2026

PARIS

SUMMARY

OUR ACCOMMODATIONS

1- HOMESTAY

OUR CHARTER OF QUALITY.....	3
OUR DIFFERENT OPTIONS.....	6

2-YEAR-ROUND RESIDENCE

THE SOCIAL HUB	7
----------------------	---

3-SUMMER RESIDENCE

YMCA PARIS (standard comfort).....	13
------------------------------------	----

4- APARTHOTELS

ADAGIO ASNIÈRES ***	14
ADAGIO CLICHY ***	15
ADAGIO LA DÉFENSE ****	16
ADAGIO REUILLY****	17

TRANSFERS.....	18
----------------	----

Les ateliers FL reserve the right to modify their offers and prices in September 2025, January, April and September 2026.





HOST FAMILIES CHARTER OF QUALITY

A homestay is the ideal solution for a rapid progress in French while immersing yourself in the French way of life!

Les ateliers FL Paris recommend all students to stay in a host family in France for a more authentic experience.

Choosing to stay in a host family means:

- *Speaking French outside the classroom*
- *Discovering the cultural heritage of France by immersing yourself in the French way of life*
- *Sharing and accepting the rules of living together with a French family*
- *Minimize your travel expenses*

CHARTER OF QUALITY FOR HOMESTAY

1-Profile of our families

Our host families are carefully selected, according to the following profile:

- **Essential qualities:**
 - Open minded
 - Welcoming
 - Willing to help and support the students
 - Clean and tidy
 - Proactive with suggestions to improve the service provided to students
- **Objectives of accommodation for the family:**
 - Willingness to discover new cultures, exchange and share
 - Contact with the dedicated team within the school
 - Belonging to our network of families
 - Retribution
- **Location:**
 - 35 to 40 minutes maximum from the school by public transport and close to a bus, tram or metro station.
- **Type of accommodation:**
 - We don't have any specific requirement regarding the the type of location. It can be an apartment, a house, a loft or even a studio, especially for students willing to be more independent.

2-Recruitment of our families

When a family meets all the requirements listed above and wants to join our community, we contact them to schedule a visit.

This meeting allows our team to check how the family will welcome our students and the family's motivations for becoming a host family. During each visit we fill out a descriptive sheet of the family and a presentation of the place they live in.

We share the charter for host families which lists all the services that the family must provide to the student during their stay. Host families sign this charter as well as an accommodation agreement which very clearly governs the commitments of both parties. This agreement is for a period of one year, renewable by tacit agreement.

We organize a visit to our host families at least once every 2 years. We have extensive experience and very positive feedback in placing students with host families.



OUR FAMILY QUALITY CHARTER (CONTINUED)

3- What we expect from our host families?

- **The family**

Welcome	Authentic experience	Assistance
<p>Whether it is a single-parent, a remarried, or a traditional family, all our hosts will provide a warm and welcoming atmosphere.</p> <p>The family will make sure to be there when the student arrives; or will at least ask someone to let the student in to drop their luggage on arrival until the family members arrive.</p> <p>The family will inform the student of the rules of conduct in the house and the mutual commitments.</p>	<p>The family will speak in French with the student every day, mostly during the meals.</p> <p>The family enjoys contacts and cultural exchanges. It does not practice any discrimination.</p> <p>The family will enjoy sharing good tips about its neighborhood, its city and its region.</p>	<p>The family will provide information about the daily life (transportation, useful addresses, cultural events etc.).</p> <p>The family helps in case of problems and provides emergency numbers.</p>

- **The room**

Furniture	Conditions	Sanitary
<p>The room is at least 10 square meters.</p> <p>The room is comfortable and furnished with:</p> <ul style="list-style-type: none"> • A bed • A bedside table • A desk • A storage place <p>The bed is made of a bed frame and a mattress; 90 x 190 cm for a single person bed, and at least 120 x 190 cm for a double bed.</p> <p>Sofa beds are accepted and clearly mentioned on the description when they are offering sleeping comfort equivalent to that of a traditional bed.</p> <p>The room has WI-FI.</p>	<p>The room is comfortable.</p> <p>Bed linen, blankets, pillows are in perfect conditions.</p> <p>Bed sheets are provided and changed each time a new student arrives, and then once a week.</p> <p>The family cleans the room once a week.</p>	<p>The bathroom is shared with the family, or private if requested (standard vs superior room).</p> <p>The bathroom has at least a sink, a bathtub or a shower.</p> <p>Towels are provided and changed each time a new student arrives, and then once a week.</p> <p>The cleaning of the toilets is carried out by the family.</p> <p>The bathroom and the toilets are kept clean.</p>

OUR FAMILY QUALITY CHARTER (CONTINUED)

3- What we expect from our host families? (continued)

- The meals

Varied diet	Quality product	Conviviality
<p>The typical French breakfast is made of a tea, coffee or hot chocolate, milk, bread, butter and jam.</p> <p>Diner is made of a starter, a main course and a desert.</p>	<p>The products are fresh. The family prepares traditional French cuisine.</p>	<p>Dinner is taken with the family and is the best occasion to share a privileged moment together.</p>

OUR DIFFERENT OPTIONS:

Options	Description
Room only	4 consecutive weeks minimum. Meals are not included. The family provides the student with specific spaces to store their provisions (fridge and cupboard). The student has access to the kitchen to heat up a dish (during French meal times).
Bed and Breakfast	French breakfast including at least: tea, coffee or chocolate, milk, fresh bread, butter and jams. For dinner, the student has access to the kitchen between 6:30 pm and 8:30 pm to heat up a dish.
Half Board	French breakfast including at least tea, coffee or chocolate, milk, bread, butter and jams. Family dinners each evening generally including a starter, main course and dessert. Lunches (including weekends) are not included in this option.
5 dinners (available in Paris only)	Dinners taken with the family 5 times a week, we will let you chat with the family on the 2 evenings without meals.

Arrivals are ideally on Sunday between 5 p.m. and 9 p.m., departures are on Saturday before noon.

For any arrival before 2 p.m. or departure after 12 p.m., a fee of 35€ will be charged. In all cases, the student must inform the family or the accommodation service of their arrival time as soon as possible.

Special requests: refer to prices

YEAR-ROUND RESIDENCE

THE SOCIAL HUB

Modern residence, only five stops with subway from the Champs-Élysées, the Social Hub is a good choice for students who want to socialize with other students, but in the same time have own privacy.

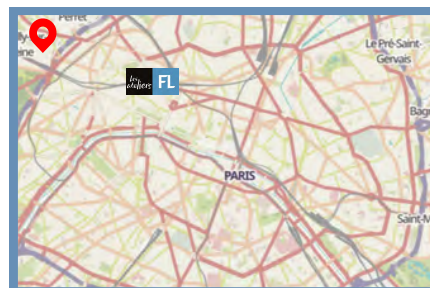
Address:

56 rue Roque de Fillol, 92800, Puteaux (Paris La Défense)

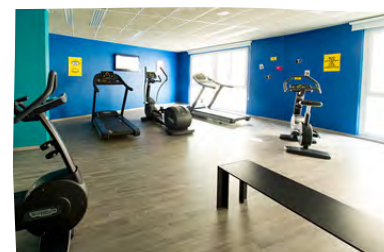
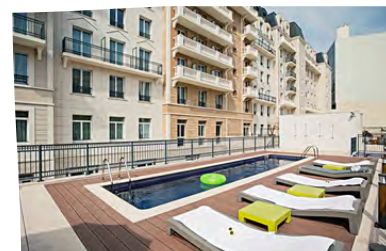
Transport:

Station: Esplanade de la Défense (line 1)

Distance from the school: 35 minutes



Chambre / studio	Entrance, double bed, desk and storage
Private bathroom	Shower and WC
Shared kitchen	Equipped with a sink, hob, refrigerator, microwave and dishes
Bed linen and towels	Bed linen and towels are provided
Laundromat	Around 4€
Check in/ Check out	Arrival from 2pm. Departure before 10am
Cleaning service	Cleaning to be done by the student Exit cleaning included
Availability	On request
Facilities	- Fitness room - Study room - Swimming pool open from June to September (depending on the weather or any other circumstances)
Free services	- Wifi - Luggage storage



SUMMER RESIDENCE

YMCA PARIS (STANDARD COMFORT)

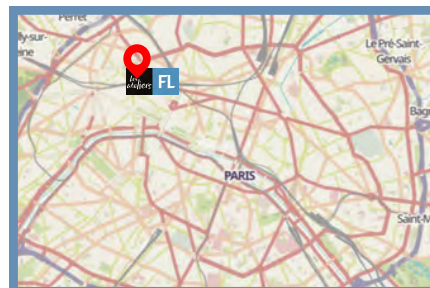
Friendly student residence located a few minutes away from school, in a quiet street, close to one of the main stations, Gare St Lazare, center of Paris. Walking distance to Parc Monceaux, Opera Garnier, Department stores.

Address:

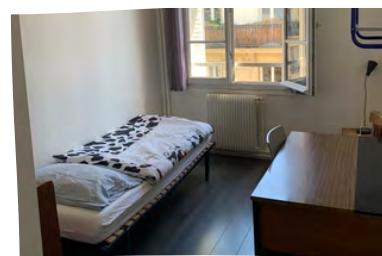
22 Rue de Naples, 75008 Paris

Transport: walking distance

Distance from the school: 8 minutes



Room / studio	Single bed, sink, storage, desk
Bathroom	Shared
Shared kitchen	Oven, microwave, fridge and hob (crocery and utensils provided)
Bed linen and towels	Bed linen and sheets included. Towels not provided
Laundromat	3€ (dryer: 0.50€)
Check in / Check out	Arrival in the afternoon preferably. Departure before 10 a.m. Key at reception.
Cleaning service	No cleaning planned (cleaning necessary to do before your departure).
Availability	July and August
Free services	Luggage storage



APARTHOTEL

ADAGIO ASNIÈRES ***

The comfort of a studio with hotel services.

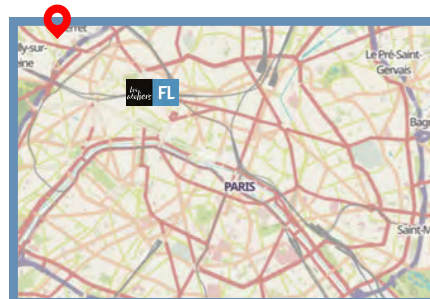
Address:

16 rue des Frères Chausson 92600 ASNIERES-SUR-SEINE

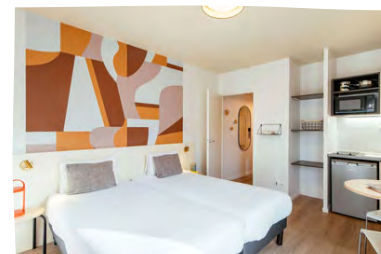
Transport:

Station: Gabriel Péri (line 13)

Distance from the school: 25 minutes



Room / studio	From 18 to 20m ² . Entrance, double or twin bed, storage and office
Private Bathroom	Shower or bathtub and WC- Hairdryer
Private kitchenette	Kitchen with sink, electric hob, fridge, cooking utensil and crockery, microwave oven, crockery set, coffee machine
Bed linen and towels	Bed linen, sheets and towels included
Laundromat	Yes - extra charge
Check in / Check out	Arrival from 3 p.m. Departure before 11 a.m.
Cleaning service	Once a week, except bedding and towels
Availability	On request - Reduced availability during trade fair periods.
Free services	- Wifi - Luggage storage
Paid services	- Breakfast - Pets allowed - Car park
Tourist Tax	To be paid on site - Between 0,75€ and 2,48€ per night and per person



APARTHOTEL

ADAGIO CLICHY ***

The comfort of a studio with hotel services.

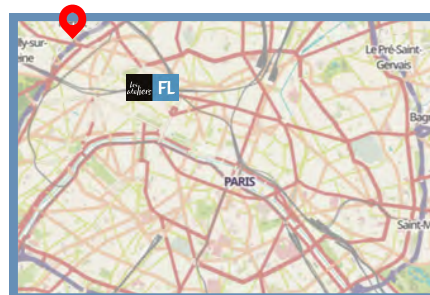
Address:

19-23 avenue Anatole France, 92110 CLICHY

Transport:

Station: Mairie de Clichy (line 13)

Distance from the school: 20 minutes



Room / studio	From 18 to 20m ² . Entrance, double or twin bed, storage and office
Private Bathroom	Shower or bathtub and WC- Hairdryer
Private kitchenette	Kitchen with sink, electric hob, fridge, cooking utensil and crockery, microwave oven, crockery set, coffee machine
Bed linen and towels	Bed linen, sheets and towels included
Laundromat	Yes - extra charge
Check in / Check out	Arrival from 3 p.m. Departure before 11 a.m.
Cleaning service	Once a week, except bed linen and towels
Availability	On request - Reduced availability during trade fair periods
Free services	- Wifi - Luggage room
Paid services	- Breakfast - Pets allowed - Car park
Tourist Tax	To be paid on site - Between 0,75€ and 2,48€ per night and per person



APARTHOTEL

ADAGIO LA DÉFENSE ****

The best choice for a stay in apart'hotel in Paris for a nice budget.

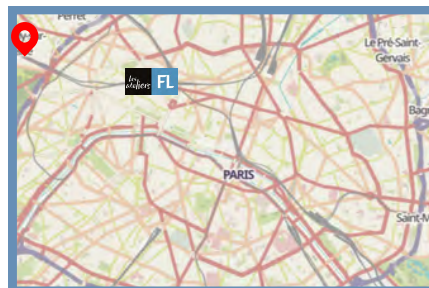
Address:

La Défense 10,
35 Cours Michelet, 92060 PUTEAUX

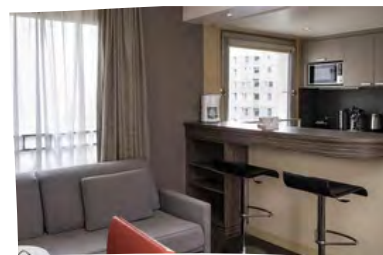
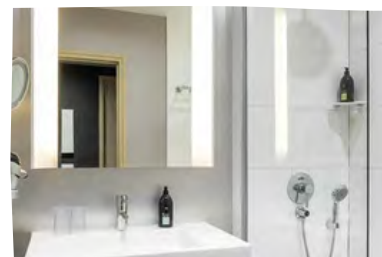
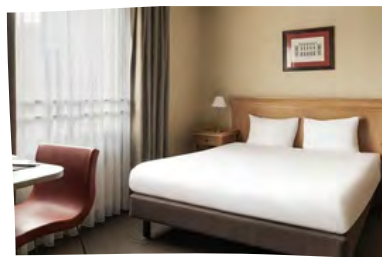
Transport:

Station: Esplanade de La Défense (Métro line 1 and 13)

Distance from the school: 25 minutes



Room / studio	From 18 to 20m ² . Entrance, double or twin bed, storage and office
Private Bathroom	Shower or bathtub and WC - Hairdryer
Private kitchenette	Kitchen with sink, electric hob, fridge, cooking utensils and crockery, microwave, crockery, kettle and coffee machine
Bed linen and towels	Bed linen, sheets and towels included
Laundromat	Yes - extra charge
Check in / Check out	Arrival from 3 p.m. Departure before 11 a.m.
Cleaning service	Once a week, except bed linen and towels
Availability	All year round, but limited availability during exhibition periods
Free services	- Wifi - Luggage storage
Paid services	- Breakfast - Pets allowed - Car park
Tourist Tax	To be paid on site Between 0.75€ and 2.50€ per night and per person



APARTHOTEL / PARIS CENTER

ADAGIO REUILLY PARIS ****

The best choice for a stay in apart'hotel in Paris for a nice budget.

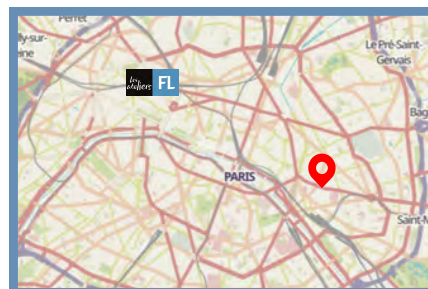
Address:

13 Rue de Reuilly, 75012 PARIS

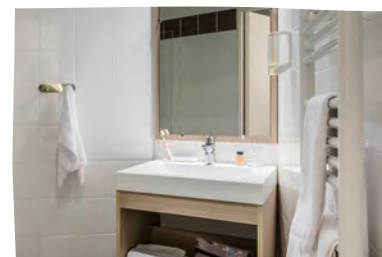
Transport:

Station: Reuilly Diderot (line 1)

Distance from the school: 30 minutes



Room / studio	From 18 to 20m ² . Entrance, double or twin bed, storage and office
Private bathroom	Shower or bathtub and WC - Hairdryer
Private kitchenette	Kitchen with sink, ceramic hob, refrigerator, microwave, crockery set
Bed linen and towels	Bed linen, sheets and towels included
Laundromat	Near
Check in / Check out	Arrival from 3 p.m. Departure before 11 a.m. Reception open every day: weekdays: 7 a.m. to 9 p.m., weekends: 7:30 a.m. to 12 p.m. and 2 p.m. to 6 p.m.
Cleaning service	Once a week, except bedding and towels
Availability	On request - Reduced availability during trade fair periods.
Free services	- Wifi - Luggage room
Paid services	- Breakfast (8.40€ / day) - Pets allowed
Tourist Tax	To be paid pay on the spot - Between 0,75€ and 2,50€ per night and per person



TRANSFERS

Transfer from train station or airport to accommodation (one way or return).

In order to organize the transfer in the best conditions, arrival details must be communicated as soon as possible.

Available options:

- Roissy Charles-de-Gaulle and Orly airports
- Beauvais airport (on request)
- Any train stations in Paris

