

11-16 YEARS OLD

# LSF JUNIOR CAMP

MONTPELLIER SOUTH OF FRANCE



LEARN FRENCH  
in the South of France







# LSF JUNIOR CAMP 2020

Since 1996 LSF has organised French language stays for teenagers (11-16) in Montpellier.

**This package is a unique formula in Montpellier which only our French language school offers and is a programme specially devised for young people coming to France for a fun and safe French study holiday.**



**In our all-inclusive French vacation courses teens from all over the world enjoy an unforgettable stay in the sunny south of France.**

The language stay includes French lessons in the mornings, accommodation in a host family or student residence (with full-board) and a fully supervised afternoon and evening activity and excursion programme.

**LSF organises the best programme for teenagers, all with 24/7 supervision and welfare !**

**Our French language stay for teenagers is available all-inclusive, with just the French course and activity / excursion programme, or with only the French course.**

This is also a popular option for whole families to come to LSF Montpellier, improve their French and discover the wonderful region of the south of France together.



# WELCOME TO MONTPELLIER

With almost 300 days of sunshine per year, Montpellier is only 15 minutes away from the sea and sandy beaches of the Mediterranean.



**Located in one of the most beautiful regions of the south of France**, Montpellier offers at the same time the opportunity to discover all the treasures of the south of France : Provence and very different landscapes.

**Montpellier is a modern and historic city, and one of the most dynamic in France in terms of culture.** The historic centre with its pedestrian streets with numerous old monuments and architectural treasures covers several centuries of history (town houses, cathedral, Faculty of Medicine, etc.).



Montpellier offers many cultural activities such as museums (including the famous Fabre museum), exhibitions, famous festivals, opera, etc.

**Montpellier is also a famous university city.** Young and vibrant, it welcomes more than 80 000 students every year (about 30 % of the population), from all over the world.

## Easy to get to !

- **Direct flights to Montpellier** operated by Air France, KLM, Easyjet, Ryanair, Eurowings, Transavia, Aer Lingus, Volotea, Norwegian/SAS, Hop! and Air Arabia
- **Direct low-cost flights** into Marseille (150 kms), Béziers (70 kms), Nîmes (45 kms), Carcassonne (170 kms) or Toulouse (220 kms) airports. Transfer upon request
- **1-hour flight to Paris** (12 flights per day from/to Orly and Roissy-CDG airports)
- **3.5 hours by TGV train** from Paris Gare de Lyon or 4 hours from Roissy-CDG airport
- **3 hours by TGV train** or drive from Barcelona, 6 hours by TGV train from Madrid
- Eurolines, Ibéribus, Flixbus and Ouibus also operate coach services to **Montpellier from many European cities**





## OUR JUNIOR SCHOOL

Our Junior Centre is located in Montpellier - close to the centre historical, the shopping and leisure centre Odysseum and the beaches.



Students have everything they need to learn French in the best conditions and to make the most of their language stay in the south of France, with excellent facilities :

- Fully-equipped and spacious classrooms
- An enclosed playground for exclusive LSF use, where students can safely relax or do recreational activities with friends during break-times, enjoying the many sunny days in the south of France
- A canteen where students have their weekday lunch together after class.







# OUR JUNIOR SCHOOL





## COURSE INFORMATION

- **Available to students from 11 to 16 years old.** Groups and individuals
- A student week begins on Sunday and ends on Saturday
- This programme is offered at all levels : beginners, A1 to B2
- **Minimum stay :** one week
- **Maximum class size :** 15
- **Total number of students :** 40-150 per week

The French courses the students participate in consist of 20 lessons per week (20 x 45 min lessons per week, ie 15 hours) with a possibility to add 4 additional one-to-one lessons per week in the afternoons.

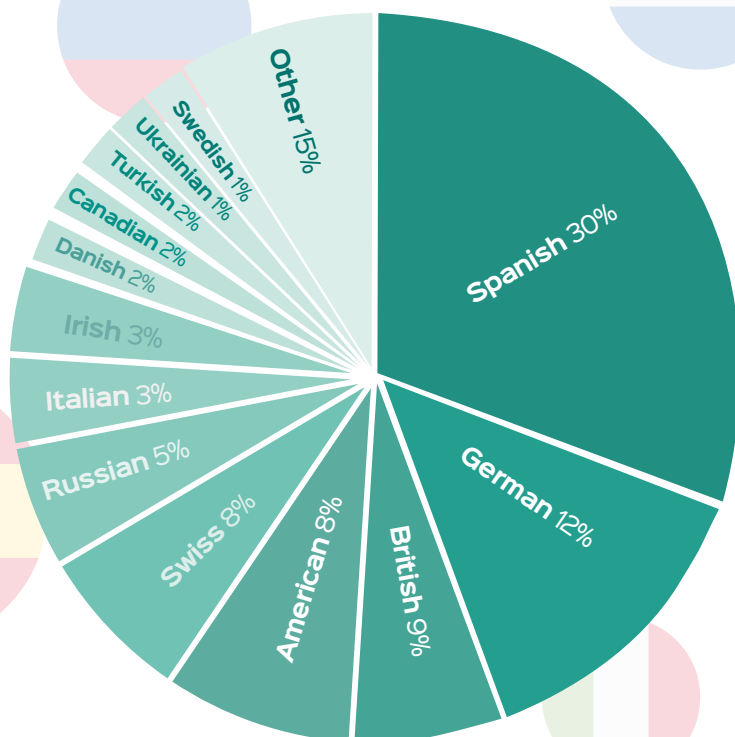
All teachers are qualified, experienced, enthusiastic and use fun and interactive teaching methods to help the students get the most out of their stay with us.

We use an integrated communicative approach in our teaching, which focuses on the student and his/her environment.

Particular attention is paid to improving speaking and listening skills, through role-plays, discussions, video and songs, activities...

Our teachers use a wide range of teaching materials and bespoke numerical and computing materials. All students receive the **LSF Roadbook**, a collection of exercises which will help them improve their French both inside and outside the classroom.

## 35 NATIONALITIES







# ACCOMMODATION OPTIONS

## FRENCH HOST FAMILY

**Staying in a French Host Family provides a complete French immersion experience and is the best way for students to improve their French during their stay with LSF.**

This not only gives the students a great opportunity to discover the French way of life but also gives them additional opportunities to practise their French while sharing meals with the family.

Junior students may stay in twin rooms (sharing the room with another LSF Junior student of the same sex).

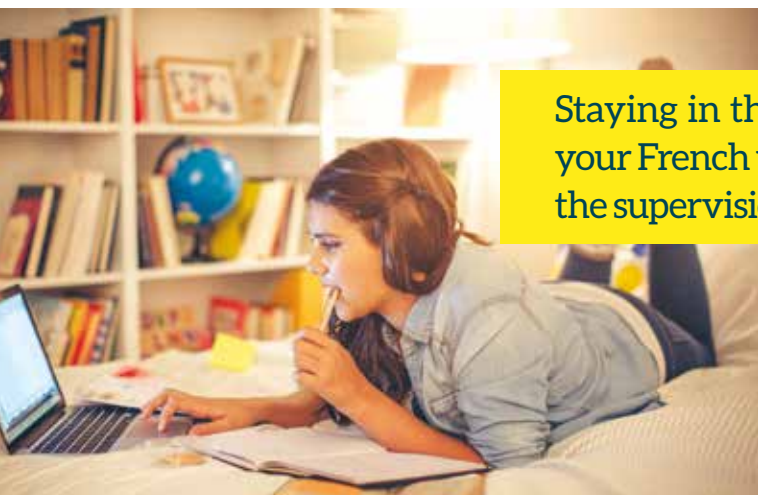
**Our host families are carefully selected and most of them have been hosting students for many years.**

The families live close to the Junior language school or just a short bus- or tram-ride away (between 5-30 minutes). We try to place only one student speaking the same language per family.

- Both accommodation options are only available as full-board
- Emergency contact number 24/7
- Transfers included for Host Family students and available on request for Residential students.



## STUDENT RESIDENCE



**Staying in the student residence allows you to practice your French with students from all over the world, under the supervision of a dynamic team of LSF activity leaders!**

The studio has its own shower, toilet as well as bed, desk and wardrobe.

The residence facilities include a common room and study area as well as a secured outdoor area.

LSF staff stay permanently in the residence, which means students receive excellent supervision and welfare, and a curfew is applicable to all students.

LSF staff supervise the students at all times.

\* Limited availability on a first-come first-served basis

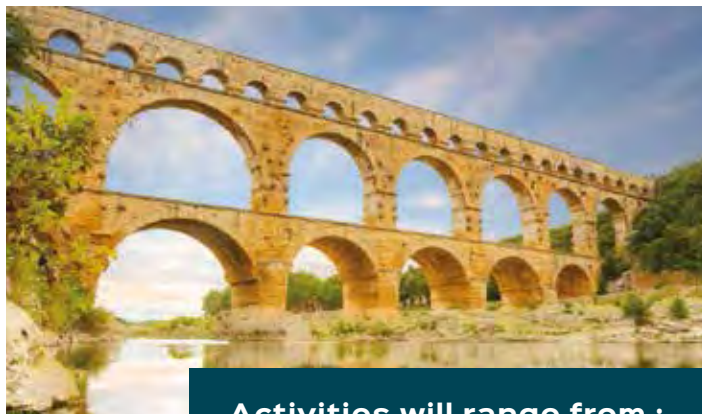




# ACTIVITY PROGRAMME AND EXCURSIONS

Full programme of afternoon and evening activities, including beach sports and parties, disco, bowling, ice-skating, Photomania; all compulsory and fully supervised by qualified LSF staff

2 excursions per week : one half-day and one full-day to local places of interest (Avignon/Pont du Gard, Sète, Nîmes, the Camargue, Grotte de Clamouse / St Guilhem-le-Désert, la Bambouseraie...)



Our social activity programme provides a full, varied and exciting mix of sports, museum visits, sightseeing trips, treasure hunts, discos and excursions, not forgetting the inevitable trips to the wonderful sandy Mediterranean beaches. During all activities friendly activity leaders accompany the students and 24/7 supervision is provided throughout the entire programme.

**It all adds up to the best way of getting to know your new environment, your new friends and your new teachers and activity leaders !**

## Activities will range from :

- Welcome Meeting
- Town Walk
- Beach-volleyball and Beach games
- Sports
- Workshops, Quizzes, Indoor Games, Video Night
- Farewell Evening (beach or disco)
- «Photomania»
- Theme Nights, Discos,
- Cinema, Bowling
- Local places of interest and riverside

## MEALS



### Homestay students :

Juniors will have breakfast and evening meals with the family.

They will have weekday lunches at the Course Centre. Students get a packed lunch provided by the family for the Saturday excursion and lunch in the family on the Sunday.

### Residential students :

During the week, the students will have breakfast and dinner together. They will have lunches during the week in the school canteen.

Students are provided with a take-out lunch by LSF for the Saturday excursion and Sunday lunch.



# LSF MONTPELLIER SAMPLE PROGRAMME

JUNIOR CENTRE - SUMMER

## WEEK 1

MONDAY	TUESDAY	WEDNESDAY	THURSDAY	FRIDAY	SATURDAY	SUNDAY
<b>09 - 10h30</b> <i>new students :</i> test + orientation <i>old students :</i> intensive	<b>09 - 10h30</b> intensive	<b>09 - 10h30</b> intensive	<b>09 - 10h30</b> intensive	<b>09 - 10h30</b> intensive	Full-day excursion <b>Avignon - Pont du Gard</b>	Free morning
break	break	break	break	break		Beach
<b>11h - 12h30</b> intensive	<b>11h - 12h30</b> intensive	<b>11h - 12h30</b> intensive	<b>11h - 12h30</b> intensive	<b>11h - 12h30</b> intensive		
lunch break	lunch break	lunch break	lunch break	lunch break		
AFTERNOON						
<i>New students :</i> Montpellier visit <i>old students :</i> film	Photomania	Half-day excursion <b>Grotte de Clamouse - Saint Guilhem le Desert</b>	Shopping	Painting workshop or afternoon games		
EVENING						
 Evening at the student residence	 Bowling or Ice-skating	 Free evening	 Beach night	 Disco night	 Musical Games Evening	 Movie Night

## WEEK 2

MONDAY	TUESDAY	WEDNESDAY	THURSDAY	FRIDAY	SATURDAY	SUNDAY
<b>09 - 10h30</b> <i>new students :</i> test + orientation <i>old students :</i> intensive	<b>09 - 10h30</b> intensive	<b>09 - 10h30</b> intensive	<b>09 - 10h30</b> intensive	<b>09 - 10h30</b> intensive	Full-day excursion <b>Avignon - Pont du Gard</b>	Day with the host family
break	break	break	break	break		
<b>11h - 12h30</b> intensive	<b>11h - 12h30</b> intensive	<b>11h - 12h30</b> intensive	<b>11h - 12h30</b> intensive	<b>11h - 12h30</b> intensive		
lunch break	lunch break	lunch break	lunch break	lunch break		
AFTERNOON						
<i>New students :</i> Montpellier visit <i>old students :</i> film	Photomania	Half-day excursion <b>Grotte de Clamouse - Saint Guilhem le Desert</b>	Shopping	Painting workshop or afternoon games		
EVENING						
 Evening with the host family	 Bowling or Ice-skating	 Evening with the host family	 Beach night	 Disco night	 Evening with the host family	 Evening with the host family
<a href="http://www.sprachenmarkt.de">www.sprachenmarkt.de</a> , Tel: +49-711-12 85 15 40, <a href="mailto:service@sprachenmarkt.de">service@sprachenmarkt.de</a>						







# A STAY FOR ALL THE FAMILY !

LSF also proposes Adult courses all year round



and Closed group courses .

Don't hesitate to contact us !

*See you soon at LSF !*



[www.sprachenmarkt.de](http://www.sprachenmarkt.de), Tel: +49-711-12 85 15 40, [service@sprachenmarkt.de](mailto:service@sprachenmarkt.de)

