

French Institute

*The art of speaking French*

OISE Paris

## *High standards*

An efficient learning method, intensive tailor-made courses provided by highly qualified teachers in a perfect study environment. At the OISE French Institute, the students reach ambitious goals and improve their language fluency in just a few weeks.



## *A result-driven teaching style*

OISE language training is about coaching the individual rather than the traditional concept of « teaching ». The key to language acquisition is confidence : once an individual has increased their own confidence in the language, the skills of fluency and accuracy will follow naturally.

Participants are immersed in an environment conducive to serious, concentrated study. With international ambitions, OISE students share the same aims and the same commitment to learning. This efficient combination of structured learning within the school and spontaneous language acquisition outside ensures that the participants achieve their language learning goals.

## *Paris, the city of enlightenment*

Paris is a city of unparalleled cultural and historical diversity : a city of art and literature, of majesty and history, of relaxation and refinement. History is present everywhere.

Paris boasts a monument to mark every step in its colourful history. Whether you explore the hidden depths of the Louvre, the sophisticated shops of the « avenue des Champs-Élysées » or « rue du Faubourg-Saint-Honoré » or simply enjoy a « café au lait » in one of the city's cosmopolitan street cafés, Paris is the perfect location to study « the most beautiful language in the world ».

## *Index*

---

	<i>pages</i>
<i>OISE Paris, a beacon of excellence</i>	<i>2-3</i>
<i>Programmes focused on individual requirements</i>	<i>4-5</i>
<i>Tutorial Programmes</i>	<i>6-7</i>
<i>Quatorial Programmes</i>	<i>8-9</i>
<i>Accommodation, leisure, and diplomas</i>	<i>10-11</i>

# A beacon of excellence

---



## *A prestigious location*

The OISE French Institute is situated in the heart of Paris, on the left bank of the Seine, near Montparnasse, renowned for its cultural life, its literary movements, its famous stores and the Latin Quarter, home to the Sorbonne University. By contrast, the formal gardens of the Luxembourg area offer a quiet, green space in the centre of the city.

## *A professional team*

Our teaching team is highly qualified, experienced and is recruited under strict guidelines.

All our teachers are French native speakers and have a four-year university degree (Masters Degree) majoring in FLE (French as a Foreign Language), usually combined with another degree such as Law, Literature, History or Art. This combination allows our teachers to adapt perfectly to each student's personal profile and objectives and to approach the French language and culture as a whole.

OISE teachers are demanding, dynamic and motivated by their students' progress. The tailor-made, rigorous teaching programmes correspond to our students' needs and are perfectly tailored to all levels of French : general, medical, legal or literary, or sectors such as aeronautics, industrial, chemical, insurance, tourism, fashion, etc.

## *Stylish & comfortable contemporary interiors*

The OISE French Institute has been designed and furnished to provide a comfortable, relaxed and business-like environment in which students are able to concentrate fully on their studies. The school is on the ground floor of an elegant 1920's building. There are light and spacious classrooms and a study area where students can work outside lessons. There is also a fully equipped self-access multimedia centre ; a WIFI connection is available to students everywhere in the school. With guidance from their tutor, students can choose from a wide range of spoken and written French texts and recordings to supplement class work.

## *Solid references*

The OISE French Institute is recognized as a Private Institution of Education (**Cours privé OISE**) by the Ministry of French Education (n°667) and received the accreditation of the « **Groupement FLE** » in 2009. The OISE French Institute is also a member of UNOSEL.



**Companies or organisations** which have regularly used the OISE French Institute for intensive French language training : Sanofi-Aventis, Chanel, Essilor, Thales, Insead, UNESCO, Orange, Ernst & Young, European Parliament, UNO and several foreign embassies in Paris...

# Programmes focused on individual requirements



## Students' profiles

Course participants are mostly :

- executives or company personnel
- highly motivated university students taking a course before, during or after their studies

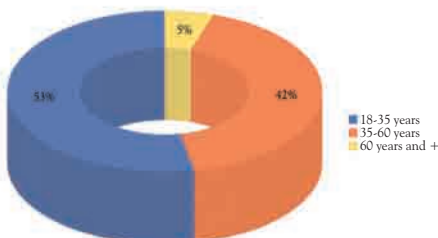
All share the same goal : achieving a significant improvement in language fluency for career purposes or exam success.

The majority of our university participants study languages, science, medicine, law, business, tourism and management. Most of the time, they follow a OISE French course as a complement to their studies.

Average percentage of students by country



Average percentage of students by age



## French language, culture and civilisation courses

### Your specific language goals

- to gain confidence in speaking the language (presentations, interviews, etc.)
- to develop accuracy in grammar and syntax
- to understand and extract information from a written document (a report, an article, research material)
- to produce a written document (essay, dissertation, correspondence, report)
- to expand vocabulary (word-building, expressions, idioms)
- to increase speed of reaction (absorb information, process and respond)
- to improve fluency in the language for exam success at college, university or business school

**Very efficient for beginners too**  
 For beginner students, we highly recommend that they take Tutorial lessons before joining a group at elementary level.



### French examination preparation courses (DILF, DELF, DALF, TCF, TEF,...)

#### Your specific language goals

- to practice working under exam conditions
- to achieve accuracy in grammar and syntax
- to understand a wide range of written information (texts, books, newspapers)
- to express thoughts, ideas and opinions confidently and fluently
- to acquire a wide range of vocabulary (idioms and expressions)

#### Targeted content of the programme

Lessons are fast-paced and dynamic ; challenging instruction, which constantly pushes the students to achieve new language learning goals, is combined with individual attention which ensures that students make maximum progress and remain focused on their exam objective.

### French for professional purposes courses

#### Your specific language goals

- to hold informal conversations with business colleagues
- to take part in business discussions
- to make presentations and conduct meetings
- to talk with confidence on the telephone
- to write accurate and informative reports, letters and faxes
- to broaden business-related vocabulary

Teachers at OISE French Institute are used to responding to students' specific requirements and adapt their lessons to different profiles and professional fields :

**diplomacy, law, finance and banking, marketing, medicine, science, accounting, tourism, engineering, human resources, aeronautics, oil industry, education...**

## Tutorial Programmes : needs driven

---

The Tutorial lesson is one of the most effective methods of language learning : the entire course is conducted by means of individual tuition thus allowing the course to be adapted to the precise level and needs of each participant.



Tutors are trained to focus on individual linguistic needs and their expertise ensures that high standards of teaching are maintained. Coming from diverse study and career backgrounds, they are able to offer instruction on a wide range of specialised areas of the language.

### Maximum effort and concentration

Tutorial tuition ensures that :

- the tutor devotes 100 % attention to the student
- teaching methods are adapted to the learning style of the student and to the pace at which the student can successfully learn
- individual weaknesses and specific needs of the student are addressed
- the course content is tailored to the student's study or career objectives
- inhibited or reserved students receive maximum talking practice
- no time is wasted covering points already known to the student or of no relevance

### Personal language audit

A language audit carried out by the academic manager and the tutors at the beginning of each course determines the precise level, needs and objectives of the participant. This forms the basis of the student's personal learning programme.

### Specialisations

Tutorial tuition allows for specialisation in a comprehensive range of specific professional areas. These are taught by experts in their particular field.

### Option : exam revision

Students wishing to take an official exam are exposed to exam requirements with active practice on past papers under timed conditions to foster familiarity with the exam.

#### Start dates :

Programmes start every Monday throughout the year. Lessons start on Mondays and end on Fridays. Students arrive in Paris on the Sunday before the beginning of the course and leave on the Saturday after the end of the course.

30 Tutorial hours, 25 Tutorial hours,  
20 Tutorial hours, 15 Tutorial hours,  
10 Tutorial hours per week

#### Day begins at 8.45 am\*

Tutorial 10	Tutorial 15	Tutorial 20	Tutorial 25	Tutorial 30
Plenary session – News Review				
15 mins				
Monitored individual study in multimedia centre				
45 mins				
Tutorial 60 mins	Tutorial 60 mins	Tutorial 60 mins	Tutorial 60 mins	Tutorial 60 mins
Tutorial 60 mins	Tutorial 60 mins	Tutorial 60 mins	Tutorial 60 mins	Tutorial 60 mins
The rest of the day is dedicated to individual consolidation and preparation work.	Tutorial 60 mins	Tutorial 60 mins	Tutorial 60 mins	Tutorial 60 mins
	The rest of the day is dedicated to individual consolidation and preparation work.	Tutorial 60 mins	Tutorial 60 mins	Tutorial 60 mins
		The rest of the day is dedicated to individual consolidation and preparation work.	Tutorial 60 mins	Tutorial 60 mins
	The rest of the day is dedicated to individual consolidation and preparation work.		The rest of the day is dedicated to individual consolidation and preparation work.	Tutorial 60 mins
Tutorial 60 mins		Tutorial 60 mins		
The rest of the day is dedicated to individual consolidation and preparation work.	The rest of the day is dedicated to individual consolidation and preparation work.	The rest of the day is dedicated to individual consolidation and preparation work.	Tutorial 60 mins	Tutorial 60 mins
			Tutorial 60 mins	Tutorial 60 mins

#### The day ends at 17.30 pm\*

#### Sample Timetable\* :

Course : « Tutorial 25 »	
Objective: « Business »	
25 Tutorial hours per week + News Review	
08:45-09:15	Preparation exercises and multimedia
09:15-10:45	Tutorial lesson – specific needs
10:45-11:00	Coffee break
11:00-11:30	Preparation exercises and multimedia
11:30-13:00	Tutorial lesson – specific needs
13:00-14:00	Lunch break
14:00-14:15	Plenary session : News Review
14:15-15:15	Tutorial lesson – specific needs
15:15-16:15	Tutorial lesson – specific needs
16:15-16:30	Tea break
16:30-17:30	Consolidation work and multimedia

\*The above timetables illustrate a school day but can be subject to changes.

## Quatorial programmes : target driven

To choose the Quatorial programme is to favour a dynamic approach to improving language performance in speaking and writing situations. This programme is practice based using quasi authentic situations. A variety of sessions of different types are designed not only to help develop language accuracy, but also to allow the participants to overcome inhibitions and to use the language eloquently in all situations.



Teachers are chosen for their personal qualities and their ability both to motivate students and facilitate the language learning process. They are trained to focus on the needs and weaknesses of their students and to plan the structure and content of the lessons accordingly. The students therefore always receive tuition that is relevant and based on what they actually need to learn. The expertise, enthusiasm and sympathetic approach of the teaching team, all combine to sustain the students' effort and concentration making each lesson a productive and stimulating learning experience.





## The programmes

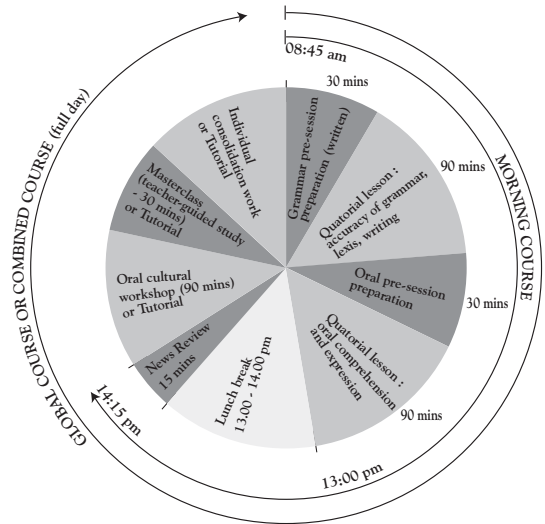
These programmes in mini-groups of 4 students, full day (Global Course or Combined Course) or half-day (Morning Course) allow a greater interaction between participants. The teacher works on and breaks down the main barriers to accurate communication (grammar structures, idioms, vocabulary and expressions).

- Individual pre-session preparation**  
 The intensive preparation sessions introduce and strengthen the profit of the Quatorial lessons which follow.
- Written communication**  
 Lessons combine reading exercises based on a varied range of materials (reports, articles) to improve understanding of a text and real-life practice in formal writing and structuring an argument during a 90-min Quatorial session.
- Oral communication**  
 Oral comprehension and expression are focused on during the 2nd Quatorial session : pronunciation, listening exercises, fluency practice workshops follow each other according to a dynamic rhythm. The language is put into practice with constant support and feedback : social talk, presentation, reporting,... By working in a French speaking environment, participants are exposed at all times of the day to a listening comprehension effort.
- Performance practice**  
 The participants have to be transformed into French-speaking speakers during the daily News Review session and Cultural Workshop during which they give a full presentation or participate in a debate on news or French culture and civilisation topics.
- Individual attention**  
 The Quatorial programme includes 30 minutes of Masterclass (teacher guided study). Participants often choose to replace this with 1, 2 or 3 hours of Tutorial lessons which is time with a private tutor to work on individual language needs or specialist professional requirements.

### Option : exam revision

Students wishing to take an official exam are exposed to exam requirements with active practice on past papers under timed conditions to foster familiarity with the exam.

The day starts at 8.45 am\*



The day ends at 14.15, 17.30 or 18.00 pm depending on the programme\*.

Sample timetable\* :

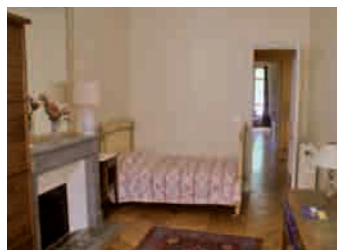
Global Course (full day programme)	
15 Quatorial hours per week + News Review + Cultural Workshop + Masterclass	
08:45-09:15	Preparation exercises
09:15-10:45	Quatorial lesson - grammar and vocabulary
10:45-11:00	Coffee break
11:00-11:30	Preparation exercises
11:30-13:00	Quatorial – Oral comprehension and expression
13:00-14:00	Lunch break
14:00-14:15	Plenary session : News Review
14:15-15:45	Cultural Workshop : fluency practice
15:45-16:15	Masterclass : self-learning under active guidance
16:15-16:30	Tea break
16:30-17:30	Consolidation work and multimedia

Sample timetable\* :

Combined Course « Tutorial 10 »	
15 Quatorial hours per week + News Review + Cultural Workshop + 10 Tutorial	
08:45-14:15	Same programme as above timetables
14:15-15:45	Cultural Workshop : fluency practice
15:45-16:00	Tea break
16:00-17:00	Tutorial lesson – specific needs
17:00-18:00	Tutorial lesson – specific needs

\*The above timetables illustrate a school day but can be subject to changes.

# Accommodation and leisure



## *A rich leisure programme*

The OISE French Institute is committed to making each student's stay culturally and socially enriching to complement the language coaching. Each week, the school offers a varied cultural programme including 3 events to discover the cultural wealth that Paris offers all year round.

Guided visits of the historical areas are regularly organised by teachers : the Marais, the Latin Quarter, Montparnasse and its artists, Montmartre, Haussmann's Paris...

Excursions, sight-seeing and visits to museums are also organised : Notre-Dame Cathedral, the Orsay Museum, the Pantheon, the Carnavalet Museum... When the weather is nice, OISE Paris organises a boat trip on the river Seine which allows students to view many of Paris' famous sites.

## *A choice of accommodation*

### **Home-stay accommodation**

All our families are located in residential areas of inner Paris and are very easily accessible by metro and bus, within 10 to 35 minutes. They offer comfortable accommodation in single rooms, selected according to strict criteria. The hosts are used to welcoming students and are genuinely interested in making them discover the richness of French culture and especially the Parisian heritage.

According to their needs, students can choose from 2 categories: « comfort » or « business » (private bathroom, Wi-Fi access, TV and DVD in room, piano available, etc.). For each category, accommodation is offered on either Bed & Breakfast or half-board basis.

### **Hotels & Apartment-Hotels**

OISE has built up a good relationship with a wide range of hotels close to the school. A list is available on request.

The Apart'Hotels option allows students to be totally independent in comfortable and fully equipped (kitchen, satellite TV, HIFI, bathroom, etc.) studios or 2-bedroom apartments for 4 persons.

The OISE team can also recommend other types of accommodation : residences, international centres...

# Diplomas and examinations

## General French certifications

**Certifications or diplomas** assess competences and know-how through a variety of demanding examinations. They do not have a limited validity.

- The **DILF** (Diplôme Initial de Langue Française, or initial diploma in French language) is a qualification in French as a foreign language that assesses basic users' skills (level A1.1 of the Council of Europe's Common European Framework of Reference for Languages). It is an initial step towards the DELF and DALF.
- The **DELF** (Diplôme d'Études en Langue Française) and the **DALF** (Diplôme Approfondi de Langue Française) are official diplomas issued by the French Ministry of Education to certify your command of the French language.

The DELF and the DALF are composed of 6 independent diplomas, each corresponding to the 6 levels determined by the Council of Europe's Common **European Framework of Reference for Languages**. At each level, the 4 language skills are assessed.

CECR	DILF/DELF/DALF	User
A1.1	DILF	basic
A1	DELF A1	basic
A2	DELF A	basic
B1	DELF B1	independent
B2	DELF B2	independent
C1	DALF C1	proficient
C2	DALF C2	proficient

## Business French Qualifications

Professional French diplomas of the Paris Chamber of Commerce are practical exams testing writing and oral skills in French in the main situations of professional life at different levels : **CFP, DFP A2, DFP B1, DFP Affaires B2, DFP Affaires C1, DFP Affaires C2,...**

## Tests

**Tests** are examinations with different validity periods. All candidates receive a certificate of results that grades them at one of six levels (from A1 to C2) on the competency scale defined by the Council of Europe's Common European Framework of Reference for Languages.

- **TCF** (Test de Connaissance du Français)

The TCF is the standard, graded French language test awarded by the French Ministry of Education.

The TCF consists of 3 compulsory examinations : oral comprehension, grammar and syntax, reading comprehension. These are multiple choice questions tests lasting 1.5 hour. The TCF can also consist of 2 optional tests (writing and oral expression). Results are valid for 2 years.

- **TEF** (Test d'Évaluation du Français)

The TEF is offered by the Paris Chamber of Commerce and consists of three compulsory tests and two are optional.

Results are valid for one year.