

**2021-2022  
PRICE LIST**



**English makes the world  
go round**

Link School of English



**LINK**  
SCHOOL OF ENGLISH  
**Malta**

# COURSES

## GENERAL ENGLISH

INDIVIDUAL RATES OCTOBER 2021 - SEPTEMBER 2022  
RATES PER PERSON PER WEEK

	No. of Lessons per week	1-7 Weeks	8-12 Weeks	13-23 Weeks	24+ Weeks
<b>GE - Group</b>	20	€ 140.00	€ 120.00	€ 110.00	€ 100.00
<b>GE - Intensive Group</b>	30	€ 190.00	€ 170.00	€ 160.00	€ 150.00
<b>Conversation in Group</b>	10	€ 70.00	€ 60.00	€ 55.00	€ 50.00
<b>Mini Group (max 6)</b>	20	€ 240.00	€ 220.00	€ 210.00	€ 200.00
<b>Individual (1)</b>	20	€ 500.00	€ 495.00	€ 490.00	€ 485.00
<b>Individual (1)</b>	10	€ 300.00	€ 295.00	€ 290.00	€ 285.00
<b>Individual COMBO *</b>	10	€ 250.00	€ 245.00	€ 240.00	€ 235.00
<b>Semi - Individual (2)</b>	20	€ 320.00	€ 300.00	€ 295.00	€ 290.00
<b>☀ High Season Supplement **</b>		€ 35.00	€ 35.00		



\*Individual Combo: In combination with other English Courses in Group

\*\*High Season from 01.06.2022 - 30.09.2022

## BUSINESS ENGLISH COURSES

	No. of Lessons per week	1-7 Weeks	8-12 Weeks	13-23 Weeks	24+ Weeks
<b>Group</b>	20	€ 190.00	€ 180.00	€ 175.00	€ 170.00
<b>Mini Group (Max 6)</b>	20	€ 290.00	€ 270.00	€ 260.00	€ 250.00
<b>Individual</b>	10	€ 300.00	€ 295.00	€ 290.00	€ 285.00
<b>☀ High Season Supplement **</b>		€ 35.00	€ 35.00		

\*\*High Season from 01.06.2022 - 30.09.2022

# ONLINE ENGLISH COURSES

	No. of Lessons per week	1 + Lesson
Online General English One to One	1	€30.00
Online Business English One to One	1	€ 35.00



## EXAM PREPARATION COURSES (IELTS, FCE, CAE, TOEFL)

	No. of Lessons per week	1 - 7 Weeks	8 - 12 Weeks	13 - 23 Weeks
Group	20	€ 160.00	€ 140.00	€ 130.00
Mini Group	20	€ 390.00	€ 380.00	€ 370.00
High Season Supplement **		€ 35.00	€ 35.00	
Examination IELTS		€230.00 Per person		



\*\*High Season from 01.06.2022 - 30.09.2022

## AVIATION / MEDICAL ENGLISH & OTHER SPECIALISED COURSES

	No. of Lessons per week	1 + Week
Mini Group ( Max 6 )	20	€310.00
Intensive Mini Group ( Max 6 )	30	€ 370.00
Individual (1)	20	€560.00

\*\*High Season from 01.06.2022 - 30.09.2022

## COST OF BOOKS

	Price per Unit
General English Courses	€33.00
IELTS/ Specialised Courses	€55.00

**Book 12 weeks or more and get 1 Free Book**

www.sprachenmarkt.de, Tel: +49-711-12 85 15 40, service@sprachenmarkt.de



# ERASMUS +

## PROFESSIONAL DEVELOPMENT FOR TEACHERS OF ENGLISH AS A FOREIGN LANGUAGE RATES PER PERSON PER WEEK

	Per person
<b>Course Tuition and Material</b>	<b>€ 400.00</b>
<b>ACCOMMODATION OPTIONS</b>	
<b>Host Family</b>	<b>Ranging from €190 to €275</b>
<b>Self-Catering Apartment / Villa</b>	<b>Ranging from €125 to €305</b>
<b>Hotel</b>	<b>Quotations upon request</b>

### PROFESSIONAL DEVELOPMENT FOR TEACHERS OF ENGLISH AS A FOREIGN LANGUAGE IN PRIMARY AND EARLY SECONDARY EDUCATION

Discover new methodologies and develop your language teaching skills for the primary and early secondary classroom. Enhance your language knowledge and increase your cultural awareness, whilst sharing your teaching experiences in an objective developmental environment.

### PROFESSIONAL DEVELOPMENT FOR TEACHERS OF ENGLISH AS A FOREIGN LANGUAGE IN SECONDARY AND ADULT EDUCATION

Discover new methodologies and develop your language teaching skills for secondary and adult learners. Enhance your language knowledge and increase your cultural awareness, whilst sharing your teaching experiences in an objective developmental environment.

### ENGLISH LANGUAGE DEVELOPMENT FOR TEACHERS WITH CLIL APPROACHES AND METHODS

Explore the principles and techniques of Content and Language Integrated Learning (CLIL). Discover how to implement CLIL in the classroom, whilst developing your language knowledge and cultural awareness.

### PROFESSIONAL DEVELOPMENT OF ENGLISH LANGUAGE FOR TEACHERS AND PRACTICAL USE OF ICT IN THE CLASSROOM

Discover how to enhance your teaching and engage your students by incorporating technology in your classroom. Explore the use of Interactive Whiteboards (IWBs), mobile devices and apps, whilst enhancing your language knowledge and cultural awareness.

### MOTIVATING STUDENTS TO LEARN ENGLISH THROUGH ART AND CULTURE FOR PRIMARY AND EARLY SECONDARY EDUCATION

Discover teaching methods that promote relationships between art and education. Experience practical hands-on activities which challenge the imagination and utilise creativity as an English Language learning tool.

### ENGLISH LANGUAGE DEVELOPMENT

Improve your language knowledge and understanding of English language teaching methodology. Experience authentic language, whilst developing your learning performance and cultural awareness.

### DEVELOPMENT OF ENGLISH LANGUAGE TEACHING THROUGH JOB SHADOWING

Shadow an experienced teacher to enhance your language teaching knowledge. Explore ways of adapting material and implementing new approaches, through guided micro-teaching sessions.

### ENGLISH FOR BUSINESS COMMUNICATION

Develop the core language skills and inter-cultural competencies required for effective professional communication in international contexts.

### ENGLISH FOR 21ST CENTURY SKILLS

Discover what it means to be a learner in the 21st century. Explore new approaches and methodologies that will equip your students with the necessary skills for life in the modern world.

### STORYTELLING FOR LANGUAGE DEVELOPMENT

Explore the ancient art of storytelling to help increase your students' engagement and English language proficiency. Discover how to use storytelling as an effective medium of instruction, whilst enhancing your language knowledge.

# BILDUNGSURLAUB

PROFESSIONAL DEVELOPMENT

RATES PER PERSON PER WEEK

**BU** Bildungsurlaub-Approval.de



Bildungsurlaub means educational leave and German employees are entitled to 5 days paid leave every year to study at a recognized institute.

The Holiday Leave is paid company leave granted to German nationals to further their education in Bildungsurlaub accepted courses. Link School of English has qualified under the Bildungsurlaub scheme.

	Per person / Per Week
<b>Course Tuition 30 Lessons &amp; Material</b>	<b>€ 223.00</b>
<b>Course Tuition 40 Lessons &amp; Material</b>	<b>€ 303.00</b>
<b>ACCOMMODATION OPTIONS</b>	
<b>Host Family</b>	<b>Ranging from €190 to €275</b>
<b>Self-Catering Apartment / Villa</b>	<b>Ranging from €125 to €305</b>
<b>Hotel</b>	<b>Quotations upon request</b>
<b>Environmental Contribution*</b>	<b>€0.50 per night up to a maximum of €5 per stay</b>

The prices do not include high season supplements and Damage deposit

## HIGH SEASON SUPPLEMENTS\*\*

Price per person per week

	1 - 7 Weeks	8 - 11 Weeks	12 - 23 Weeks	24+ Weeks
<b>Course High Season Supplement**</b>	<b>€ 35.00</b>	<b>€ 35.00</b>	<b>€ 35.00</b>	
<b>Accommodation High Season Supplement**</b>	<b>€ 60.00</b>	<b>€ 60.00</b>	<b>€ 60.00</b>	<b>€ 30.00</b>

The above rates do not include any new additional government taxes which may be introduced any time.

\*Compulsory

\*\*High Season from 01.06.2022 to 30.09.2022

Check-in @ 15:00hrs Check-out @ 11:00hrs

www.sprachenmarkt.de, Tel: +49-711-12 85 15 40, service@sprachenmarkt.de

## INTERNSHIPS



PER PERSON

€ 400.00 Per person

### CONDITIONS:

- A booking of an English Course is compulsory for a minimum of 3 weeks.
- Minimum requirement for work placement is 1 to 4 months
- Accommodation is provided in self-catering apartments / villa against payment.
- Applicable only for adults.

## JOB OPPORTUNITIES FOR NON-EU STUDENTS

### STUDENT APPLICATIONS

#### Procedure for third-country students seeking employment in Malta

Non-EU citizens who are following (i) English-language courses at education establishments licensed by the ELT Council, and (ii) level-rated courses approved by MQRIC at MQF levels 1-4, may take up employment in Malta for a maximum period of 20 hours per week.

Only students whose course exceeds a minimum duration of 90 days may apply for request a work permit from Jobsplus. Eligible students must have their visa renewed in Malta prior to applying for the work permit. Non-visa nationals must apply for a national visa before the expiry of their initial 90-day authorization to stay in Malta. Students may lodge an application for a visa extension after 21 days from the date of arrival in Malta.

Once the visa extension will have been granted, students may proceed to apply for a work permit at Jobsplus. The requirements related to the application for a work permit are published by the Employment Licences Unit. By means of this work permit, students may work for a maximum period of 20 hours per week until the expiry of the visa.

Notes to students To maintain your eligibility to hold a student visa, you are required to attend all lessons as well as make satisfactory progress in the course you are enrolled in. Absences have to be justified by genuine reasons.

If you are sick or unable to attend classes, you must inform your school and provide the relevant certification. Any justified absences from class (e.g.travel) must be approved beforehand by the school. The latter must be provided with the exact dates when you are going to be absent from class.

Identity Malta may decide not to issue, or renew, a visa if the student fails to attend a minimum of 75% of the lessons. It is the student's responsibility to comply with the conditions of a student visa. Failure to comply with the aforementioned conditions may result in the revocation of the visa and such decision may affect any future visa applications in Malta.

# UNIVERSITY OF MALTA & JUNIOR COLLEGE



L-Università  
ta' Malta

Lying at the cross-roads of the Mediterranean, the University of Malta has been, over its 400-year history, the hub for international academic exchange on the island. The University of Malta is the leading higher education institution in Malta and its structures are in line with the Bologna Process and the European Higher Education area.

The university of Malta is offering the following programmes:

<b>PROGRAMMES</b>		<b>2021/2022</b>
<b>1.</b>	Sixth Form programmes at the Junior College	€ 5,900
<b>2.</b>	Foundation Studies programme	€ 6,600
<b>3.</b>	Medical Foundation programme	€ 16,000
<b>4.</b>	i. Arts based and business related undergraduate programmes leading to Certificate, Diploma or Degree ii. Preparatory programme for Master's Degree	€ 8,500 € 8,500
<b>5.</b>	i. Science based undergraduate programmes leading to a Certificate, Diploma or Degree (except the Degree of Doctor of Medicine and Surgery and the Degree of Bachelor of Dental Surgery) ii. Preparatory programme for Master's Degree	€ 10,800 € 10,800
<b>6.</b>	Programmes leading to the Degree of Doctor of Medicine and Surgery and programme leading to the degree of Bachelor of Dental Surgery	€ 26,000
<b>7.</b>	Arts based and Business related postgraduate programmes leading to a certificate, Diploma or Degree (with the exception of programme leading to the executive Master in Business Administration (MBA))	€ 10,800
<b>8.</b>	i. Programme Leading to the Executive Master in Business Administration (MBA) ii. Preparatory programme for the MBA	€ 14,400 € 8,500
<b>9.</b>	Science based postgraduate programmes leading to a certificate, Diploma or Degree	€ 13,400
<b>10.</b>	Ph.D.,D .Mus.,S.Th.D. programmes	€ 11,100
<b>11.</b>	M.Mus. Programme	€ 7,400

Changes to the above rates are at the discretion of The University of Malta.

# ACCOMMODATION

## VILLA FANAL

**A LINK RESIDENTIAL VILLA SITUATED WITHIN WALKING DISTANCE FROM OUR SCHOOL**

Villa Fanal is located in High Ridge, the most exclusive and expensive area of Malta where only villas are built. This property includes a fabulous swimming pool, lovely garden, large basement with games room, four large bedrooms with one en-suite. Exceptional sea views may be enjoyed from the breakfast terrace. The common areas include a large hall, massive spacious lounge and dining room which lead to a lovely terrace with magnificent views and kitchen. Wifi is installed all around the villa.

### RATES PER PERSON PER WEEK IN SHARED ROOMS

SELF- CATERING VILLAS SHARED WITH OTHER STUDENTS

	1-7 Weeks	8-12 Weeks	13-23 Weeks	24+ Weeks
<b>Rates per week</b>	€ 110.00	€ 105.00	€ 100.00	€ 95.00
<b>Water &amp; Electricity/Gas for cooking/wifi*</b>	€ 35.00	€ 35.00	€ 35.00	€ 35.00
<b>☀ High Season Supplement **</b>	€ 60.00	€ 60.00	€ 60.00	€ 30.00
<b>Deposit against damage*</b>	€ 300.00	€ 300.00	€ 300.00	€ 300.00
<b>Environmental Contribution*</b>	€0.50 per night up to a maximum of €5 per stay			
<b>Private Bathroom</b>	€ 30.00	€ 30.00	€ 30.00	€ 30.00
<b>Single Supplement</b>	€ 100.00	€ 100.00	€ 100.00	€ 100.00



The above rates do not include any new additional government taxes which may be introduced any time.

No heating allowed

\*Compulsory

\*\*High Season from 01.06.2022 - 30.09.2022



Total rooms	11
Bedrooms	4
Total Beds	12
Total Bathrooms	4
Dining Room	1
Living Room	1
Kitchen	1
Swimming Pool	1
Garden	1
Games Room	1



Check-in @ 15:00hrs Check-out @ 11:00hrs

www.sprachenmarkt.de, Tel: +49-711-12 85 15 40, service@sprachenmarkt.de



## VILLA XIWAN

### A LINK RESIDENTIAL VILLA SITUATED WITHIN WALKING DISTANCE FROM OUR SCHOOL

Villa Xiwan is situated along-side Villa Fanal in High Ridge and consists of five bedrooms overlooking sun terraces with fantastic sea views, eight bathrooms, large kitchen/breakfast, spacious dining room, separate TV lounge with a surrounding 800 square metre garden soaked up in sun with ample space for sports. Outdoor areas are ideal for entertaining with garden furniture and sunbeds. An entire floor is dedicated to sports having a table-tennis, table soccer and professional gym equipment. Wifi is installed all around the villa.

### RATES PER PERSON PER WEEK IN SHARED ROOMS

SELF- CATERING VILLAS SHARED WITH OTHER STUDENTS

	1-7 Weeks	8-12 Weeks	13-23 Weeks	24+ Weeks
<b>Rates per week</b>	€ 90.00	€ 85.00	€ 80.00	€ 75.00
<b>Water &amp; Electricity/Gas for cooking/wifi*</b>	€ 35.00	€ 35.00	€ 35.00	€ 35.00
<b>High Season Supplement **</b>	€ 60.00	€ 60.00	€ 60.00	€ 30.00
<b>Deposit against damage*</b>	€ 300.00	€ 300.00	€ 300.00	€ 300.00
<b>Environmental Contribution*</b>	€0.50 per night up to a maximum of €5 per stay			
<b>Private Bathroom</b>	€ 30.00	€ 30.00	€ 30.00	€ 30.00
<b>Single Supplement</b>	€ 100.00	€ 100.00	€ 100.00	€ 100.00



The above rates do not include any new additional government taxes which may be introduced any time.

No heating allowed

\*Compulsory

\*\*High Season from 01.06.2022 - 30.09.2022



Total rooms	17
Bedrooms	5
Total Beds	16
Total Bathrooms	8
Dining Room	1
Living Room	1
Kitchen	1
Garden	1
Games Room	1



Check-in @ 15:00hrs Check-out @ 11:00hrs

# ACCOMMODATION

## VILLA AURORA

### A LINK RESIDENTIAL VILLA SITUATED WITHIN WALKING DISTANCE FROM OUR SCHOOL

This private Villa is situated in the heart of Swieqi and accommodates around 11 students. It has four bedrooms, two with en-suite bathrooms. The common parts include a spacious dining & lounge area with separate kitchen and breakfast facilities, all ideal for educational purposes. Lemon and orange trees embellish the garden in a relaxing atmosphere. Wifi is also installed all around the villa.

### RATES PER PERSON PER WEEK IN SHARED ROOMS

SELF- CATERING VILLAS SHARED WITH OTHER STUDENTS

	1-7 Weeks	8-12 Weeks	13-23 Weeks	24+ Weeks
<b>Rates per week</b>	€ 90.00	€ 85.00	€ 80.00	€ 75.00
<b>Water &amp; Electricity/Gas for cooking/wifi*</b>	€ 35.00	€ 35.00	€ 35.00	€ 35.00
<b>High Season Supplement **</b>	€ 60.00	€ 60.00	€ 60.00	€ 30.00
<b>Deposit against damage*</b>	€ 300.00	€ 300.00	€ 300.00	€ 300.00
<b>Environmental Contribution*</b>	€0.50 per night up to a maximum of €5 per stay			
<b>Private Bathroom</b>	€ 30.00	€ 30.00	€ 30.00	€ 30.00
<b>Single Supplement</b>	€ 100.00	€ 100.00	€ 100.00	€ 100.00

The above rates do not include any new additional government taxes which may be introduced any time.

No heating allowed

\*Compulsory

\*\*High Season from 01.06.2022 - 30.09.2022



Total rooms	10
Bedrooms	4
Total Beds	11
Total Bathrooms	4
Dining Room	2
Living Room	1
Kitchen	1
Garden	1



Check-in @ 15:00hrs Check-out @ 11:00hrs

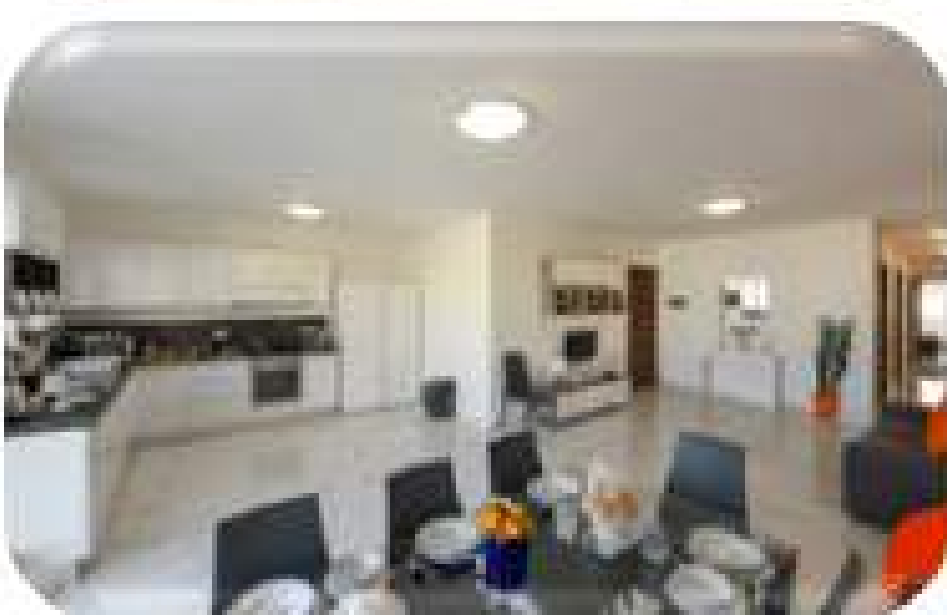
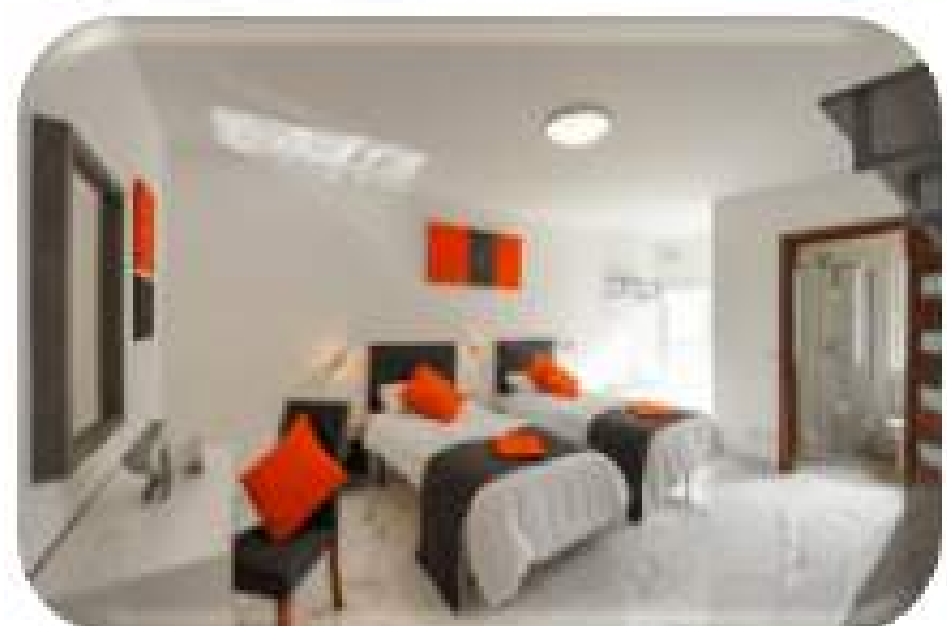
## LINK COURT APARTMENTS

### LINK RESIDENTIAL APARTMENTS OPPOSITE OUR MAIN SCHOOL

Link Court Residential Apartments are situated opposite one of our Schools in the quiet residential area of Swieqi. They consist of three fully furnished apartments having three bedrooms, two bathrooms, combined sitting and dining with a spacious kitchen. Two balconies on either side of the apartments allow the lovely sunshine to lighten up your morning. We also offer an exclusive splendid two-bedroom penthouse on the fourth floor with sea views from a distance. The basement of Link Court is being transformed into a chill-out area specially designed for students with laser display, music, games room and mini gym.

### RATES PER PERSON PER WEEK IN SHARED ROOMS SELF- CATERING APARTMENTS SHARED WITH OTHER STUDENTS

	1 - 7 Weeks	8 - 12 Weeks	13 - 23 Weeks	24 + Weeks
<b>Rates per week</b>	€ 90.00	€ 85.00	€ 80.00	€ 75.00
<b>Water &amp; Electricity/Gas for cooking/wifi*</b>	€ 35.00	€ 35.00	€ 35.00	€ 35.00
<b>☀ High Season Supplement **</b>	€ 60.00	€ 60.00	€ 60.00	€ 30.00
<b>Deposit against damage*</b>	€ 300.00	€ 300.00	€ 300.00	€ 300.00
<b>Environmental Contribution*</b>	€0.50 per night up to a maximum of €5 per stay			
<b>Single Supplement</b>	€ 100.00	€ 100.00	€ 100.00	€ 100.00



The above rates do not include any new additional government taxes which may be introduced any time.

No heating allowed

\*Compulsory

\*\*High Season from 01.06.2022 - 30.09.2022



Total Apartments	4
Bedrooms	11
Total Beds	33
Total Bathrooms	7
Dining Room	4
Living Room	4
Kitchen	4
Balconies	8
Games Room in the block	1
Chill out area in the block	1
Music Room in the block	1
Mini Gym	1

Check-in @ 15:00hrs Check-out @ 11:00hrs

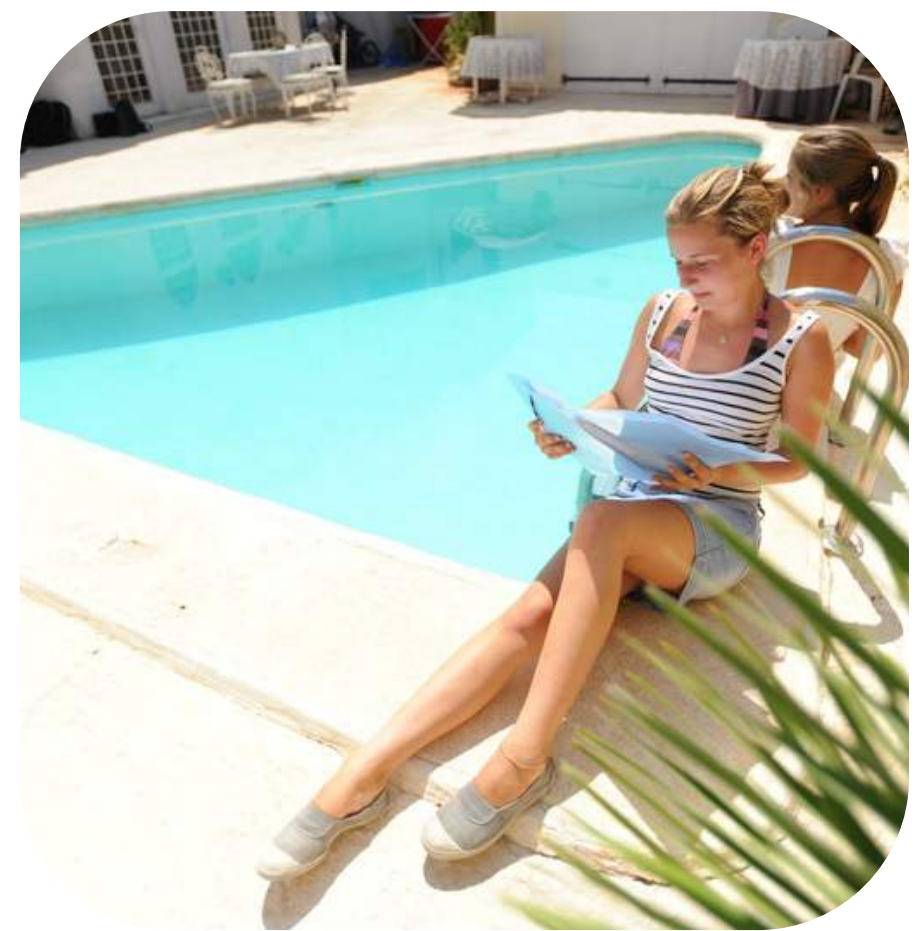
# ACCOMMODATION

## HOST FAMILY

On a daily basis students interact in English, talking about interesting topics thereby boosting conversational skills. Our selected host families are all within walking distance from both our Schools. An added bonus is the first-hand experience of discovering the Maltese way of life, including traditions values, food and culture.

### RATES PER PERSON PER WEEK IN SHARED ROOMS

	SHARED ROOM
<b>Half Board basis</b>	<b>€190.00</b>
<b>Full Board basis</b>	<b>€210.00</b>
<b>High Season Supplement **</b>	<b>€35.00</b>
<b>Environmental Contribution*</b>	<b>€0.50 per night up to a maximum of €5 per stay</b>
<b>Single Room Supplement</b>	<b>€40.00</b>
<b>Bathroom En-suite Supplement</b>	<b>€50.00</b>
<b>Swimming Pool Supplement</b>	<b>€20.00</b>
<b>WI-FI Supplement</b>	<b>€10.00</b>
<b>Special Dietary Requirements</b>	<b>€50.00</b>
<b>Only Nationality in the Family</b>	<b>€40.00</b>
<b>Supervision Supplement (Under 15)</b>	<b>€55.00</b>



The above rates do not include any new additional government taxes which may be introduced any time.

\*Compulsory

\*\*High Season from 01.06.2022 - 30.09.2022

Check-in @ 15:00hrs Check-out @ 11:00hrs

# AIRPORT TRANSFERS

	1 - 7 Weeks		8 - 24 Weeks	
	One-way	Two-way	One-way on arrival	One - way Departure
<b>Taxi Max: 3 Persons</b>	<b>€28.00</b>	<b>€55.00</b>	<b>Free</b>	<b>€28.00</b>

## GENERAL ENGLISH COURSE RATES INCLUDE:

- Registration and Placement Fees
- Welcome pack including:
- Welcome letter
- LSE Student card
- LSE Map
- Orientation meeting
- Assessment test
- LSE bag & pencil
- Academic counselling with Director of Studies
- Free weekly afternoon tutorial
- LSE certificate of attendance
- Unlimited Wi-Fi at School
- Free computer access at School
- Free access to School Library

## REDUCED HOURS PROCEDURE

In the event that the class number of students is three or lower, Link School reserves the right to reduce the number of lessons:

From 20 group lessons to 10 lessons 3:1, 2:1, 1:1

From 30 group lessons to 20 lessons 3:1, 2:1, 1:1

## CONDITIONS COURSE AND ACCOMMODATION

- All reservations must include tuition
- Duration of lesson: 45 minutes
- Minimum course length: 1 week
- Course Days: Monday to Friday
- Tuition week: 5 days
- Accommodation week: 7 nights
- A refundable deposit of €300 is compulsory for students accommodated in self-catering apartments / villa
- All quoted rates are subject to a final written confirmation
- All rates are inclusive of VAT
- Subject to availability at the time of booking
- Terms and Conditions apply, please refer to [www.linkenglishschool.com](http://www.linkenglishschool.com)
- Specific request for CELTA, DELTA tutors will be subject to an extra fee Course Rates do not include Book
- Excursions are subject to weather conditions
- Excursion packages may be altered subject to the number of participants
- Air-conditioning is not included in accommodation
- No heating allowed
- Rates quoted for Books, Airport Transfers, Water & Electricity (Villas/ apartments ) are net to us.

# SPECIAL OFFERS FOR LONG-TERM BOOKINGS

### ONLY COURSE

Book 5 to 7 weeks of Tuition and get 1 free week of Tuition included

Book 8+ weeks of Tuition and get 2 free weeks of Tuition included + Free SIM Card

### TUITION AND ACCOMMODATION

Book 5 to 7 weeks (Tuition and Accommodation) and get 1 free week of Tuition included

Book 8 to 11 weeks (Tuition and Accommodation) and get 2 free weeks of Tuition included + Free SIM Card

Book 12 to 23 weeks (Tuition and Accommodation) and get 2 free weeks of Tuition and Accommodation included + Free SIM Card

Book 24 weeks plus (Tuition and Accommodation) and get 3 free weeks of Tuition and Accommodation included + Free SIM Card

# SUMMARY SHEET

## ONLY COURSE

**COURSE :** GENERAL ENGLISH 20 LESSONS

RATES PER PERSON

### 5 WEEKS

Book 5 weeks and pay 4 weeks

**€593.00**

The price include:

- 5 Wks of 20 Lessons
- 1 text book

### 8 WEEKS

Book 8 weeks and pay 6 weeks

**€753.00**

The price include:

- 8 Wks of 20 Lessons
- 1 text book

### 12 WEEKS

Book 12 weeks and pay 10 weeks

**€1200.00**

The price include:

- 12 Wks of 20 Lessons
- FREE 1 text book

### 24 WEEKS

Book 24 weeks and pay 22 weeks

**€2200.00**

The price include:

- 24 Wks of 20 Lessons
- FREE 1 text book

The prices do not include high season supplements.

## COURSE + ACCOMMODATION

**COURSE :** GENERAL ENGLISH 20 LESSONS

**ACCOMMODATION:** VILLA XIWAN / VILLA AURORA / LINK COURT APARTMENTS

RATES PER PERSON

### 5 WEEKS

Book 5 weeks and pay 4 weeks of Tuition and 5 weeks Accommodation

**€1273.00**

**The price include:**

- 5 Wks of 20 Lessons
- 1 text book
- 5 Wks Self- Catering Villas shared with other students
- Two way Transfer

### 8 WEEKS

Book 8 weeks and pay 6 weeks of Tuition and 8 weeks Accommodation

**€1741.00**

**The price include:**

- 8 Wks of 20 Lessons
- 1 text book
- 8 Wks Self- Catering Villas shared with other students
- Two way Transfer ( FREE one way)

### 12 WEEKS

Book 12 weeks and pay 10 weeks of Tuition and Accommodation

**€2428.00**

**The price include:**

- 12 Wks of 20 Lessons
- FREE 1 text book
- 12 Wks Self- Catering Villas shared with other students
- Two way Transfer (FREE one way)

### 24 WEEKS

Book 24 weeks and pay 21 weeks of Tuition and Accommodation

**€4438.00**

**The price include:**

- 24 Wks of 20 Lessons
- FREE 1 text book
- 24 Wks Self- Catering Villas shared with other students
- Two way Transfer (FREE one way)

The prices do not include high season supplements, Damage deposit and ECO TAX

## HIGH SEASON SUPPLEMENTS

	4 Weeks	8 Weeks	12 Weeks	24 Weeks
Course High Season Supplement **	€ 35.00	€ 35.00	€ 35.00	
Accommodation High Season Supplement **	€ 60.00	€ 60.00	€ 60.00	€ 30.00

The above rates do not include any new additional government taxes which may be introduced any time.

\*Compulsory

\*\*High Season from 01.06.2022 - 30.09.2022

Check-in @ 15:00hrs Check-out @ 11:00hrs

# ADULT PACKAGE

## COURSE + ACCOMMODATION + ACTIVITIES

**COURSE :** GENERAL ENGLISH 20 LESSONS

**ACCOMMODATION:** HOST FAMILY OR VILLA XIWAN / VILLA AURORA / LINK COURT APARTMENTS

RATES PER PERSON

PACKAGE A	PACKAGE B	PACKAGE C	PACKAGE D
Valletta Mdina 3 Cities Bowling Film & Literature Session at School	Link Beach Club Snorkelling Harbour Cruise Bowling Comino	Link Beach Club Valletta Harbour Cruise Mdina & Rabat Comino	Gozo Valletta Harbour Cruise Mdina & Rabat 3 Cities
<b>€69.00 per person</b>	<b>€79.00 per person</b>	<b>€89.00 per person</b>	<b>€107.00 per person</b>

All above sample activity packages include transport, guide or leader and an entrance fee where applicable.  
A supervision supplement is applicable for unaccompanied minors.

<b>1 WEEK</b> 1 Week General English Course 20 Lesson + Accommodation in Host Family <b>€418.00</b> <b>The price include:</b> <ul style="list-style-type: none"> <li>• 1 Week General Course 20 Lessons</li> <li>• 1 text book</li> <li>• Accommodation in Host Family Half Board shared room with other students</li> <li>• Two way Transfer</li> </ul>	+	PACKAGE A	=	€487.00
	+	PACKAGE B	=	€497.00
	+	PACKAGE C	=	€507.00
	+	PACKAGE D	=	€525.00
<b>1 WEEK</b> 1 Week General English Course 20 Lesson + Accommodation in Villa Xiwan / Villa Aurora / Link Court Apartaments <b>€353.00</b> <b>The price include:</b> <ul style="list-style-type: none"> <li>• 1 Week General Course 20 Lessons</li> <li>• 1 text book</li> <li>• 1 Week Accommodation Self- Catering Villa or apartment shared room with other students</li> <li>• Two way Transfer</li> </ul>	+	PACKAGE A	=	€422.00
	+	PACKAGE B	=	€432.00
	+	PACKAGE C	=	€442.00
	+	PACKAGE D	=	€460.00

The prices do not include high season supplements, Damage deposit and ECO TAX

### HIGH SEASON SUPPLEMENTS

	Course High Season Supplement **	Host Family High Season Supplement **	Accommodation Villas High Season Supplement **
<b>1 Week</b>	<b>€ 35.00</b>	<b>€ 35.00</b>	<b>€ 60.00</b>

The above rates do not include any new additional government taxes which may be introduced any time.

\*\*High Season from 01.06.2022 - 30.09.2022

Check-in @ 15:00hrs Check-out @ 11:00hrs

www.sprachenmarkt.de, Tel: +49-711-12 85 15 40, service@sprachenmarkt.de

# JUNIOR PROGRAMME

# SUMMER CAMP



## FULL SUMMER PROGRAMME

<b>AGES</b>	<b>12 - 16 YEARS OLD</b>
<b>DATES</b>	<b>12TH JULY TO 9TH AUGUST 2022</b>



	<b>COURSE</b>	<b>ACCOMMODATION</b>	<b>ACTIVITIES PER WEEK</b>	<b>PRICE PER WEEK</b>
<b>SUMMER CAMP OPTION 1</b>	General English in Group 20 Lessons	<b>MELLIEHA</b> 4 star Hotel	5 half-day activities 7 evening activities 2 full-day trips	<b>€1047.00</b>
<b>SUMMER CAMP OPTION 2</b>	General English in Group 20 Lessons	<b>QAWRA</b> 4 star Hotel	5 half-day activities 7 evening activities 2 full-day trips	<b>€1018.00</b>
<b>SUMMER CAMP OPTION 3</b>	General English in Group 20 Lessons	<b>HOST FAMILY</b>	5 half-day activities 2 full-day trips	<b>€640.00</b>

## SAMPLE ACTIVITY PROGRAMME - ONE WEEK

	<b>SUNDAY</b>	<b>MONDAY</b>	<b>TUESDAY</b>	<b>WEDNESDAY</b>	<b>THURSDAY</b>	<b>FRIDAY</b>	<b>SATURDAY</b>
<b>AFTERNOON</b>	South of Malta	Beach trip	Art & Craft	Valleta tour	Sliema and St Julians	Beach trip	Center of Malta
<b>EVENING</b>	Welcome Meeting	Welcome party	Games night	Drama Session	Quiz night	Farewell party	Movie at the hotel

### COURSE

- Placement Test
- Course Material (1 Book)
- 20 Lessons (15 Hours) Tuition per week + 5 academic activities with leader
- Lessons are held in the morning or afternoon
- Maximum 15 students per class
- End of course certificate

### ALSO INCLUDED

- Welcome pack
- Link Bag and pen
- Shared airport transfers on arrival and departure
- 24-hour supervision at the residence
- Map
- SIM card

### ACCOMMODATION

- Air-conditioned bedrooms (Hotels) with shower (maximum 4 students per bedroom)
- Breakfast, lunch (packed) and dinner
- The school may use accommodation at alternative premises of a similar or better standard

### ACTIVITIES

- Transport to and from activities and trips included (where necessary)
- Group leaders present on all activities and trips





## LINK SCHOOL OF ENGLISH TERMS AND CONDITIONS - GENERAL – 2022

Document A/Ref: TC001

### ENROLMENT

To enrol with the school for a course the enrolment form must be completed. Any allergies or medical conditions must be indicated. Upon receipt of the enrolment form the student will be sent a confirmation of enrolment and invoice for the total cost. Full payment of the total invoice value must be paid by not less than 30 days prior to the arrival in Malta. If a student enrolls in less than 30 days prior to arrival in Malta, the total cost on the invoice must be paid in full upon confirmation. Post booking voucher will not be issued unless payment is received in full. Payment for accommodation in residence or hotel is subject to conditions stipulated at the time of booking. Terms of enrolment for groups will be agreed upon through correspondence prior to the booking.

### VISA

Link School of English offers assistance in visa applications when applicable. The Invitation Letter is issued by the School upon receipt of full payment to enable the Student to apply. Full documentation must be presented by the student to the Authorities concerned. The Student is aware of the Data Protection Policy and allows the School to handle and submit personal documentation for visa application purposes should the need arise. It is the Student's responsibility to ensure that the visa is valid or that the visa application/extension is in order. Link School of English is not responsible if the visa is refused or not extended for any reason whatsoever.

Should the visa application for entry into Malta be refused, the student or agent must inform the School immediately to avoid cancellation penalty. The Student or agent must immediately present a written proof of refusal of visa to the School.

Once a copy of the Refusal letter is received in good time, the School will process the refund of payment less booking processing/cancellation fee of €100.00 and bank charges.

Once in Malta, should the visa extension be refused through the student's negligence, poor attendance at School, insufficient documentation for visa application, late submission, Link School of English is not obliged to refund any tuition or accommodation fees.

If a student is in Malta on a Study Visa and the level of attendance falls below the 80% benchmark, the School is duty bound to report the student to the Government Immigration Authority and hand over all the details and attendance records. No refunds of course and/or accommodation are applicable.

If the student is unable to attend lessons due to illness, a medical certificate must be provided to the school by e-mail on [ados@linkenglishschool.com](mailto:ados@linkenglishschool.com) and whatsapp on +356 9949 5019 on the first and last day of absence. It is at the discretion of the Immigration Officer to confirm acceptance.

### ACCEPTABLE FORMS OF PAYMENT

Fees and costs are payable in EUROS by Credit Card or Bank Transfer. Credit Card payments must include an additional 3% to cover Credit Card fees.

When paying by Bank Transfer, bank charges must be added to the cost of the course fees.

### CANCELLATION AND REFUND

In the event of cancellation within 30 days of the date of arrival in Malta the total invoice value is non-refundable.

·In the event of a student terminating their course during the time of the course the amount paid is non-refundable.

·No cancellation is accepted for accommodation bookings in residence or hotel.

·Cancellation terms for groups will be agreed upon by correspondence prior to booking.

·In the event of cancellations due to force majeure such as COVID-19, the school will issue a Credit Note for the total value paid less 30% administration fee. The Credit note enables the student to postpone the booking to an agreed date. The credit note is transferrable to other students. No Refund is applicable.

·Bookings of Special Reduced Offers will be subject to additional terms indicated on the Special Offer.

### EXAMINATION PREPARATION COURSES

Students wishing to sit for external examinations (IELTS, TOEFL, Cambridge examinations) whilst in Malta, must book through the appropriate examination centre. Please contact our Director of Studies by email on [dos@linkenglishschool.com](mailto:dos@linkenglishschool.com) for assistance in applying and for advice. Students should take into account examination dates when booking their English language course.

### CLASS SIZE

Link School of English aims to maintain small class sizes. The maximum class size is 12 for adults (aged 20 years and over), 15 for teenagers (aged 13-19 years) and kids (aged 8-12 years). Classes with Online Students, whether Hybrid or totally Online, may reach a maximum of 20 per class for both adults and teenagers.

### LEVEL OF ENGLISH

Link School of English reserves the right to place students in the level appropriate for them as deemed by the placement test and students individual needs.

### TIMETABLE

Link School of English reserves the right to determine the time of day of students lessons. Students should be aware that they may have lessons in the morning on one day and/or lessons in the afternoon on the following day. All reservations must include tuition. Morning lessons start at 09:00hrs. Afternoon lessons start at 13:00hrs. Students may start tuition on any day of the week. Lessons are held in both the morning and the afternoon depending upon availability, the course booked and the level of the student. A lesson lasts 45 minutes. Usually students will have 2 lessons together lasting 1 hour and 30 minutes. This is called a module.

After the first module, students have a 30 minute break. Minimum course length is 1 week. Total tuition days per week is 5 days. One to One lessons will take place at the time indicated by our Director of Studies.

### CHANGE OF LEVEL

Students who wish to change level during their course should speak with their teacher, who will discuss this with the Academic Department. The Director of Studies will then speak with the student and process the request. Link School of English reserves the right to not accede to the change of level request if deemed inappropriate. The student would be obliged to purchase a new book for the new level.

### STUDY MATERIAL AND BOOKS

Study material and books are not included in the tuition price. Students are obliged to purchase a textbook at each level. If the package programme purchased includes one book, the student is still obliged to purchase another book once the class level changes. The teacher will also provide occasional hand outs. The textbook is handed out on the second day of the course.

## LENDING LIBRARY

Reading books may be borrowed from the school library against a deposit.

## REDUCED HOURS PROCEDURE

In the event that the class number of students is three or lower, Link School reserves the right to reduce the number of lessons:

From 20 group lessons to 10 lessons 3:1, 2:1, 1:1

From 30 group lessons to 15 lessons 3:1, 2:1, 1:1

## INTERNSHIPS

When booking an internship, the Student is obliged to book an English course at the school for a minimum of 3 weeks against payment. Minimum requirement for work placement is from 1 to 4 months. Accommodation against payment is provided in our self catering residence. Non EU citizens would need to register with Jobs+ on application and pay any relevant Government Registration Fees, even those due by the engaging party.

## SCHOOL ATTENDANCE

Course attendance in class is compulsory, whether face-to-face or online, according to agreement. Students who are unable to attend lessons due to sickness should inform their host family and the school by calling on +21384825 and sending an e-mail to dos@linkenglishschool.com. Persistent lack of attendance will be deemed as a reason for expulsion. Students must provide a medical certificate in cases of absence for more than 1 day. The certificate of attendance will reflect the percentage of the lessons attended. The certificate of attendance will not be issued if attendance is less than 80%. Persistent lack of attendance will be deemed as a reason for expulsion.

## CERTIFICATE OF ATTENDANCE

A Certificate of Attendance will be awarded to the student on the last day of the course by the Director of Studies. Certificates will not be issued for students who miss more than 20% of their course.

## ACCOMMODATION

- **Host Family** – Students must familiarise themselves with the Host Family Guidelines in the Student Manual before the start of their stay. The Guidelines are provided on confirmation of booking. Any damage caused to property owned by the school or any of its appointed outlets has to be paid directly by the student before departure. Shared room implies twin, triple or quadruple. The room may be shared with other students.
- **Self-catering Premises** – Students must familiarise themselves with the Self Catering Premises Guidelines in the Student Manual before the start of their stay. A refundable deposit of €300 per student will be collected by Link School of English on the first day of study, when staying in apartments. The deposit will be refunded to the student on the day of departure once an inspection is carried out with inventories to evaluate any damage. Rooms in the self-catering accommodation may be twin, triple or quadruple and shared with other students. Standard Check In: 15:00 hours Standard Check Out: 09:00 hours. Check In and Check Out times may be changed upon request but subject to the discretion of the school. Minors are not allowed to reside in apartments unless they are accompanied by their parents or guardians. Minors must never be left in the premises unattended. Inspection visits may be carried out at random during the stay. No friends are allowed in the premises other than those permitted by the School through the Room Allocation process. Students are not allowed to bring in their own electrical appliances/equipment/installation into the accommodation. No heating is allowed. Students are prohibited from using the premises as place for business/trade/ job related activities. Loss of deposit and penalties apply if lights are left on and/or any of the guidelines are ignored.
- **Hotels** – Students staying at hotels must abide by the Regulations imposed by the hotel. A damage deposit may be applicable prior to checking-in.

## MEALS

Self-catering – no meals are included. Half Board basis – breakfast and dinner are included. Full Board basis – breakfast, packed lunch and dinner are included. Meals provided by host families include: Continental Breakfast-Tea/Coffee/Juice, Cereal/Toast with butter, ham/cheese/ jam. Packed Lunch includes two filled sandwiches or rolls, fruit, and water. Dinner includes a hot meal with dessert and water. Supplements apply for any special dietary requirements

## ENVIRONMENTAL CONTRIBUTION TAX

Students of 18 years of age and over, are bound to pay €0.50 per person per night for Environment Contribution Tax. However the maximum amount paid by one student amounts to €5.00 for each continuous stay. Copy of Passport or Identity Card is required for this reason. The copy of passport must be provided at booking stage. If accommodation is in Hotel, a copy of passport or identity card must also be provided to the Hotel.

## DAMAGES

Any damage caused to property owned by the school or any of its appointed outlets/premises has to be paid directly by the student before their departure.

## Leisure Programme/Activities

Link School of English reserves the right to make amendments to leisure programmes and activities due to weather conditions or any other reason beyond the school's control. All excursions are weather permitting. No refunds are given if excursions are cancelled due to unfavourable weather or other conditions beyond our control. Furthermore, no refunds are applicable should the student fail to attend the activity for any reason. Any additional costs due to Covid19 measures are to be borne by the student. Any fines/penalties incurred by the School or student due to the student's insubordination to Covid19 measures will be borne by the student.

## DIVING

If students wish to scuba dive it is necessary to provide a medical certificate and proof of insurance upon confirmation of the dive.

## AIRPORT TRANSFERS

One way and two way transfers are available upon request. Actual flight details (date, time and flight numbers) must be submitted when booking. Airport transfer on arrival (airport – accommodation) is compulsory when accommodation is reserved in self catering premises.

## MINORS

Apart from the General Terms and Conditions in this document, minors also have a separate set of Terms & Conditions to abide by.

## PERSONAL HOLIDAY

If a long term student wishes to take a break from the course, the school must be informed at least 2 weeks prior to the study break. The relevant form must be completed and can be collected from the office. Students may take a 2 week study break in every 12 weeks. The school is not obliged to compensate for any missed lessons or accommodation. Should the student be in Malta with a visa, the CVU immigration authorities will be informed about the absence from the School. A copy of the flight ticket will need to be provided, for CVU purposes. The amount of lessons missed will be reflected in the Certificate of Attendance at the end of the course. The School is not responsible if the student's absence from the School will result in refusal of visa or visa extension by the CVU.

## SCHOOL/PUBLIC HOLIDAYS

Link School of English is open from Monday to Friday and is closed on public holidays; PUBLIC HOLIDAYS and CHRISTMAS HOLIDAYS:

23rd December 2021 to 2nd January 2022, 10th February, 19th March, 31st March, 15th April, 1st May, 7th June, 29th June, 15th August, 8th September, 21st September, 8th December, 13th December, 24th December 2022 to 2nd January 2023. If a student misses lessons during the above School/Public Holidays, LINK will provide 'compensation lessons' during the days that LINK is operating. This means that, before LINK closes for any School/Public Holiday, the number of lessons per day would be increased in order to cover the lessons that will be missed. This is subject to the discretion of the School, and only if possible.

## LEARNER DISMISSAL POLICY AND EXPULSION

Link School of English reserves the right to ask students to leave the course and/or accommodation due to unacceptable behaviour, misconduct or unjustified absence. In this situation no refund of fees will be made and any extra costs incurred by the school on the behalf of the student will be charged to the student (including travel expenses). Repatriation is at student's own expense. The school expects all of the students to be polite and considerate towards other students, members of staff and host families at all time. The School does not tolerate any form of bullying and discrimination as a consequence of race, creed, skin colour, sexual orientation, political beliefs and mental and physical disadvantage.

## THE FOLLOWING INSTANCES CONSTITUTE ENOUGH GROUNDS FOR IMMEDIATE EXPULSION WITHOUT FOREWARNING AND WITHOUT REFUND:

- When a student poses a realistic threat to the safety and well being of others, through words or actions or both
- When a student is found carrying guns, knives, or other instruments which may jeopardise the safety of others
- When a student is found to be in possession of drugs or alcohol or under the influence of drugs or alcohol
- When a student does not comply to the Equal Opportunities Policy and the Sexual Harassment Policy
- When a student is caught stealing or vandalising school property
- When a student may in any way, tarnish the sound reputation of Link School of English or its partners

A verbal warning will be given prior to dismissal in the following cases:

- A student who misbehaves or distracts others during class
- A student whose constant tardiness disrupts the lesson flow
- A student caught smoking within the school premises
- A student who does not respect the school's Health & Safety procedures

## COMPLIANCE WITH LAWS INCLUDING SUBSTANCE ABUSE, MOTOR ACCIDENTS AND PROCEDURES IN CASE OF ARREST

Students must be aware of the Laws in Malta. Smoking is not allowed in public areas. The legal drinking age in Malta is 17. Students may not purchase or consume alcohol if they are younger than 17 years of age. It is illegal to drink alcohol in the streets. Drug possession (e.g. cannabis, LSD, ecstasy, amphetamines, Marijuana, etc.) in Malta, even for personal use, is a criminal offence. It is illegal to carry any sort of weapons, including knives.

## COMPLAINTS

Concerns regarding accommodation, courses, activities or any other issue must be raised with the student welfare officer either verbally or in writing to [sales@linkenglishschool.com](mailto:sales@linkenglishschool.com) during the students' course. Link School of English cannot be held liable for any complaint received after the students' departure. Students are to file the complaint immediately the problem arises. Contact numbers are on the student cards and voucher provided. Students may also visit our offices during office hours.

## Photography and Filming

A passport sized photo of the student must be submitted to the school on enrolment in order to include in the Student Card. Photographs taken during the student's educational stay in Malta may be used in promotional material. If the student does not wish to have photographs or films of themselves used in such material they must inform the school in writing. Minor students will not be photographed unless the school receives a written consent from the agent, parent, guardian, teacher or any other Entity recognised by Law.

## Data Protection

All information collected by the school will be subject to the Data Protection Act of Malta. In enrolling the student with Link School of English the agent, parent, guardian, teacher or any other Entity recognised by Law, authorises and agrees to the processing of any personal data as well as the disclosure of such information to other companies and service providers within the Link School of English group. Such disclosure will only be as deemed necessary for the successful provision of services and any associated purpose. Personal data including a copy of the student's identification document must be kept by the school for the identification and recognition of the student, the processing of ECO tax submission, visa processing, banking and accounting purposes, statistical reports and other course related matters. As per the School's Data Protection Policy, the student's data will be kept by the school for as long as the agent, parent, guardian, teacher or any other Entity recognised by Law, enrolling the student, wishes that the student continues benefitting from it. The agent, parent, guardian, teacher or any other Entity recognised by Law may oppose, limit, amend or request the deletion of personal data by sending an e-mail to: [info@linkenglishschool.com](mailto:info@linkenglishschool.com), as well as to lodge a complaint with the competent authorities.

## LIABILITY

Link School of English is not liable in case of accident, illness, loss or damage to personal effects or belongings. Link School of English cannot be held responsible for any decisions taken by local authorities including decisions about issues of entry or extensions of VISAs. The school shall in no way be held responsible for any costs incurred due to lack of or insufficient insurance cover. Link School of English reserves the right to be fully reimbursed for any medical or associated costs it may incur on the behalf of a student who requires urgent medical attention.

## Health

Students suffering from any disability, illness or condition must inform the school in writing at least 2 weeks prior to their arrival in Malta.

## Medical Assistance

Medical Assistance given to European students by the state hospital or state clinics is free of charge as long as the European Health Insurance Card (EHIC) is presented. If the student is not in possession of a valid EHIC Card card, payment may be requested by the State Hospital and Clinic. If you are covered by a Health Insurance, you can make a claim. We strongly advise you to contact your insurers and their representatives in Malta, immediately the need to file a claim arises. Should you need any medical assistance during your stay, you may also you may contact our School doctors (doctor's fee applicable) on the numbers provided in the welcome pack.

## Personal Belongings

Link School of English will not be held responsible for the loss / theft or damage of students' belongings.

## Damages

The full cost of any damages caused to school property/accommodation or during services provided by the school or its subcontractors must be paid by the student.

## Policies

All students, agents and subsidiaries are bound to abide by the policies and rules of Link School of English. The School's policies and rules are available on the website, on the Notice Boards and in other literature provided. Non-compliance may lead to the expulsion of the student from the school. Link School of English is an Equal Opportunities employer and as such expects all of its employees, service providers including Host Families and students to uphold both the Equal Opportunities Policy and the Sexual Harassment Policy of the School. Copies of both these Policies can be found throughout the School premises, on the website and are also available upon request.

## Force Majeure

Link School of English will not accept responsibility or liability in the event of inability to fulfil any of its obligations as a result of any event (s) outside of Link School of English's reasonable control. Such events include (but are not limited to) terrorist attacks, war or the threat of war, riots, industrial action, natural or manmade disasters, unusually adverse weather conditions, pandemics or any other event(s) that may classify Malta as an 'at risk destination'. Link School may only operate subject to the enforcement or new regulations imposed by the Local Authorities, including but not limited to the Ministry of Education, Foreign Affairs and Health.

## Insurance

It is strongly recommended that students take out a comprehensive health, accident and travel insurance policy which covers them for the entirety of the duration of their course. It is also recommended that the insurance covers the student for cancellations, loss/theft of baggage and personal belongings, emergency evacuation and any other eventuality that may occur.

## Force Majeure

Link School of English will not accept responsibility or liability in the event of inability to fulfil any of its obligations as a result of any event (s) outside of Link School of English's reasonable control. Such events include (but are not limited to) terrorist attacks, war or the threat of war, riots, industrial action, natural or manmade disasters, unusually adverse weather conditions, pandemics or any other event(s) that may classify Malta as an 'at risk destination'. Link School may only operate subject to the enforcement or new regulations imposed by the Local Authorities, including but not limited to the Ministry of Education, Foreign Affairs and Health.

## **COVID-19**

Students are obliged to keep updated with Laws and Regulations stipulated by the Maltese Government and to follow and abide by all the rules and regulations at all times.

Masks are to be worn at all times, both indoors and outdoors, during the whole duration of the stay.

Social distancing is to be kept as recommended by the Malta Health Authority. Regular hand sanitising is highly recommended.

If a student feels COVID19 symptoms, the student must stay at home, inform the School on the emergency number +356 9949 5019 and Get Tested as soon as possible. If Covid - positive, Quarantine measures need to be followed at the Student's expense. The School is not responsible to compensate for any missed lessons or unused accommodation.

## **ASSUMPTION OF RISK FORM**

Prior to arrival in Malta, the student or guardian must sign the Assumption of Risk Form.

## **MINORS**

APART FROM THE GENERAL TERMS AND CONDITIONS IN THIS DOCUMENT, MINORS ALSO HAVE A SEPARATE SET OF TERMS & CONDITIONS TO ABIDE BY.

## **JURISDICTION**

Any disputes that may arise between the student and Link School of English are subject to the laws of the Republic of Malta and the jurisdiction of the Maltese Courts.

# LINK SCHOOL OF ENGLISH

## TERMS AND CONDITIONS - MINORS – 2022

These terms and conditions are in addition to the general terms and conditions.

### ENROLMENT

Minor students are not allowed to enrol directly. Enrolments must be done through an adult (agent, parent, guardian, teacher or any other Entity recognised by Law). A copy of the adult's IDENTITY CARD is to be submitted with the enrolment form. If the applicant is a legal guardian, a copy of the Notarial Guardian Document is also to be submitted.

### MALTESE LAWS AND LEGISLATION

The consumption of alcohol by students under the age of 17 is prohibited. Consumption or possession of illegal substances or drugs is against the law. Parents, legal guardians and students under the age of 18 will abide by Maltese laws and code of conduct.

### SUPERVISION

Students under the age of 18 who are accommodated in apartments/hotels/student residence must be accompanied by a parent or guardian or foreign leader. Minors are not allowed to reside in such accommodations unattended. Students under the age of 18 who are not accompanied by a parent or guardian or foreign leader will only be eligible to be accommodated in host families. Students aged 15 or under are required to pay a supervision fee to the School, provided they are not accompanied by a parent or guardian or foreign leader. Students aged 16 or over are not required to have supervision, however it is highly recommended. A disclaimer of responsibility form would need to be signed by such student's parent or guardian indicating that no supervision is required.

### General Curfew

Unaccompanied minors are not allowed out without supervision unless the school receives written consent from the student's parent or guardian. School curfews may still apply. Accompanied students must follow the direction of the foreign group leader or guardian and the School.

### Lessons and Attendance

Attendance in class is compulsory. Students who cannot attend due to illness must inform their host family and the student welfare officer. Missing lessons with no valid reason can lead to expulsion. Mobile phones must be turned off during lesson times. Food and drink may not be consumed in the classroom. Link School of English reserves the right to make amendments to time and location of lessons if circumstances beyond the schools control require it.

### Class Size

Link School of English aims to maintain small class sizes. The maximum class size is 15 for teenagers (aged 13-19 years) and kids (aged 8-12 years).

### Group Size

Ratio of Supervisors to Learners shall be no less than 1:15 on the school's premises, organised leisure activities and accommodation.

### Behaviour

Link School of English strongly believes in non discrimination and equal opportunities. Students must show respect to others at all times. Aggressive behaviour to others will not be tolerated.

### Expulsion

Link School of English reserves the right to ask students to leave the course and/or accommodation due to unacceptable behaviour, misconduct or unjustified absence. In this situation no refund of fees will be made and any extra costs incurred by the school on the behalf of the student will be charged to the student (including travel expenses). Repatriation is at student's own expense.

### Activities

Participation in all pre-arranged activities and excursions is compulsory. If a student is ill or does not wish to participate the school must have written permission from the parent or guardian clearly stating why the student is unable to attend.

### Documentation

Students are provided with a student card on their first day and must carry this with them at all times. Link School of English advises that students refrain from keeping passports or other important documentation on their person in case of loss.

Document B/Ref: TC003 refers. "Supervision" means that:

- The student is accompanied to and from the school whenever necessary
- The student is never left unaccompanied at the residence
- Our School Representative will collect the student from the arrival lounge at the Malta International Airport (the cost of supervision does not include transportation costs)
- Our School Representative will accompany the student during check-in at the departure lounge at the Malta International Airport (the cost of supervision does not include transportation costs)

Courses for minors do not include 24-hour supervision, however members of staff are available on a 24-hour basis should the student require assistance.

### STUDENT ACCOMPANIED TO AND FROM SCHOOL BY THE PARENT, GUARDIAN, TEACHER OR ANY OTHER ENTITY RECOGNISED BY LAW

When bringing the student to school and collecting the student from school each day, the parent, guardian, teacher or any other Entity recognised by Law, will be asked to present an identification document to the School Manager and to provide a copy of the document to the school. The document will be used for identification and recognition purposes for the security of the student.

### AIRPORT PROCEDURES

Unaccompanied minors travelling alone to and from Malta will need to follow certain procedures on arrival and departure, in accordance with the airline's regulations. It is advisable that the adult/guardian becomes aware of such procedures and informs Link School of English of the requirements when the course booking is being confirmed. Costs may apply, depending on the requirements.

### Diving

Written parental consent is required for any students wishing to dive. Proof of insurance and a medical certificate must also be provided upon confirmation of the dive.

### Accommodation

When staying with a host family, students must abide by house rules at all times. The student must not invite other people to the house without prior permission from the host family. Students under the age of 18 who are not accompanied by a parent or guardian or foreign leader will only be eligible to be accommodated in host families. Minors are not allowed to reside in apartments/hotels/student-residences unless they are accompanied by their parents or guardians. Minors must never be left in the apartment/hotel/student-residences unattended.

### Complaints

Teenagers must follow the same complaints procedure as in the main terms and conditions. If students encounter a problem during their stay it must be raised verbally or in writing prior to the end of their course.



**LINK**  
SCHOOL OF ENGLISH  
**Malta**