

The New England School of English Harvard Square

Introducing NESE
A SCHOOL RECOGNIZED FOR ITS EXCELLENCE



An Extraordinary Opportunity to Learn English®

- ◆ A commitment to excellence in the classroom
- ◆ The provision of a challenging and stimulating curriculum
- ◆ A recognition that each student arrives at NESE with his own unique abilities, needs, and goals, all of which are critical to his success
- ◆ An understanding of the importance of a warm and supportive learning environment
- ◆ A belief in each student's ability to succeed
- ◆ An appreciation of the power and value of kindness and compassion
- ◆ An awareness that language learning is incomplete without an understanding of the culture within which the language is used
- ◆ An undertaking to create an extraordinary opportunity to learn English



The New England School of English
Harvard Square



PHILOSOPHY

NESE's board is comprised of successful professionals in the fields of education, the arts, business, and science. As advisors to NESE, they provide direction, expertise and their collective experience to contribute to NESE's success.

- ◆ Mr. Robert Bier, MBA
Harvard Graduate School of Business
- ◆ Mr. Brian Buckley, Ed.M.
Harvard Graduate School of Education
- ◆ Ms. Hye-Jin Choi, M. Arch.
Yale Graduate School of Architecture
- ◆ Mr. Julio C. S. Dimer, B.A.
Unisinos - School of Social Communication
- ◆ Ms. Susan B. J. Dobson, Ed.M.
Harvard Graduate School of Education
- ◆ Mr. Richard Downing, A.B.
Harvard University, Faculty of Arts and Sciences
- ◆ Mr. Jeff François, Ed.M.
Harvard Graduate School of Education
- ◆ Mr. Mark S. Gurecki, Ed.M.
Harvard Graduate School of Education
- ◆ Ms. Martha M. Hall, Ed.M.
Harvard Graduate School of Education
- ◆ Mr. Todd Hannig, M.A.
Teachers College, Columbia University
- ◆ Mr. John Hartman, M.Ed.
Boston University School of Education
Harvard University, Apprentice Teacher Program
- ◆ Dr. Christian Hollenberg, Ph.D.
University of Bonn
MBA; Harvard Graduate School of Business
- ◆ Mr. Panos Philandrinou, A.B.
Harvard University, Faculty of Arts and Sciences
- ◆ Mr. Edward B. Quigley, Ed.M.
Harvard Graduate School of Education
- ◆ Dr. Ian B. Shine, M.D.
Cambridge University
- ◆ Mr. Thomas A. S. Shine, M. Arch.
Yale Graduate School of Architecture
- ◆ Ms. Frances Tsakonas, CAS
Harvard Graduate School of Education

Photos by Rose Lincoln

Awards & Recognitions

NESE is accredited by ACCET and maintains professional affiliations with TESOL, MATSOL, NAFSA, English USA, IIE, and the Southern Law Poverty Center. Further, NESE has been recognized by Bildungsurlaub in Germany and the Saudi Arabian Cultural Mission, among other governmental agencies.

- ◆ 2015 [Harvard University]
Staff Member Awarded Harvard University Honor, "Harvard Hero"
- ◆ 2014 [The Boston Globe & The Commonwealth Institute]
#11 of Top 100 Women-Led Massachusetts Organizations
- ◆ 2012 [ACCET]
Accreditation Renewal – Perfect Score
- ◆ 2011 [Veja Magazine] [Viagem e Turismo Magazine]
Top 5 English Language Schools - Worldwide
- ◆ 2010 [Veja Magazine] [Viagem e Turismo Magazine]
Top 5 English Language Schools - Worldwide
- ◆ 2010 [US Center for Citizen Diplomacy]
Top 10 Outstanding Programs
- ◆ 2002 [MATSOL]
Outstanding Working Conditions Award
- ◆ 2001 [Language Travel Magazine] (April & August)
Agent-Recommended School – United States
- ◆ 2000 [Language Travel Magazine]
Agent-Recommended School – United States
- ◆ 1999 [Language Travel Magazine]
Agent-Recommended School – United States
- ◆ 1996 [Exame]
Best English Course for Executives – Worldwide
- ◆ 1995 [Exame]
One of Top Four Agent-Requested Schools – United States
- ◆ 1993 [Language Travel Magazine]
Agent-Recommended School – United States



BOARD OF ADVISORS



A School Founded & Managed by Educators

NESE's unique approach is based on educational research, the result of an analysis that NESE's founder (and current president) conducted while completing her graduate degree at Harvard University's Graduate School of Education. Her examination of effective school and classroom environments allowed her to

create NESE, a school that is guided by its commitment to excellence in the classroom, its respect for all peoples, its belief in each student's ability to succeed, and its recognition that each student's specific needs and goals are critical to his success.

Martha Hall, Ed.M.,
Harvard University

Director of NESE

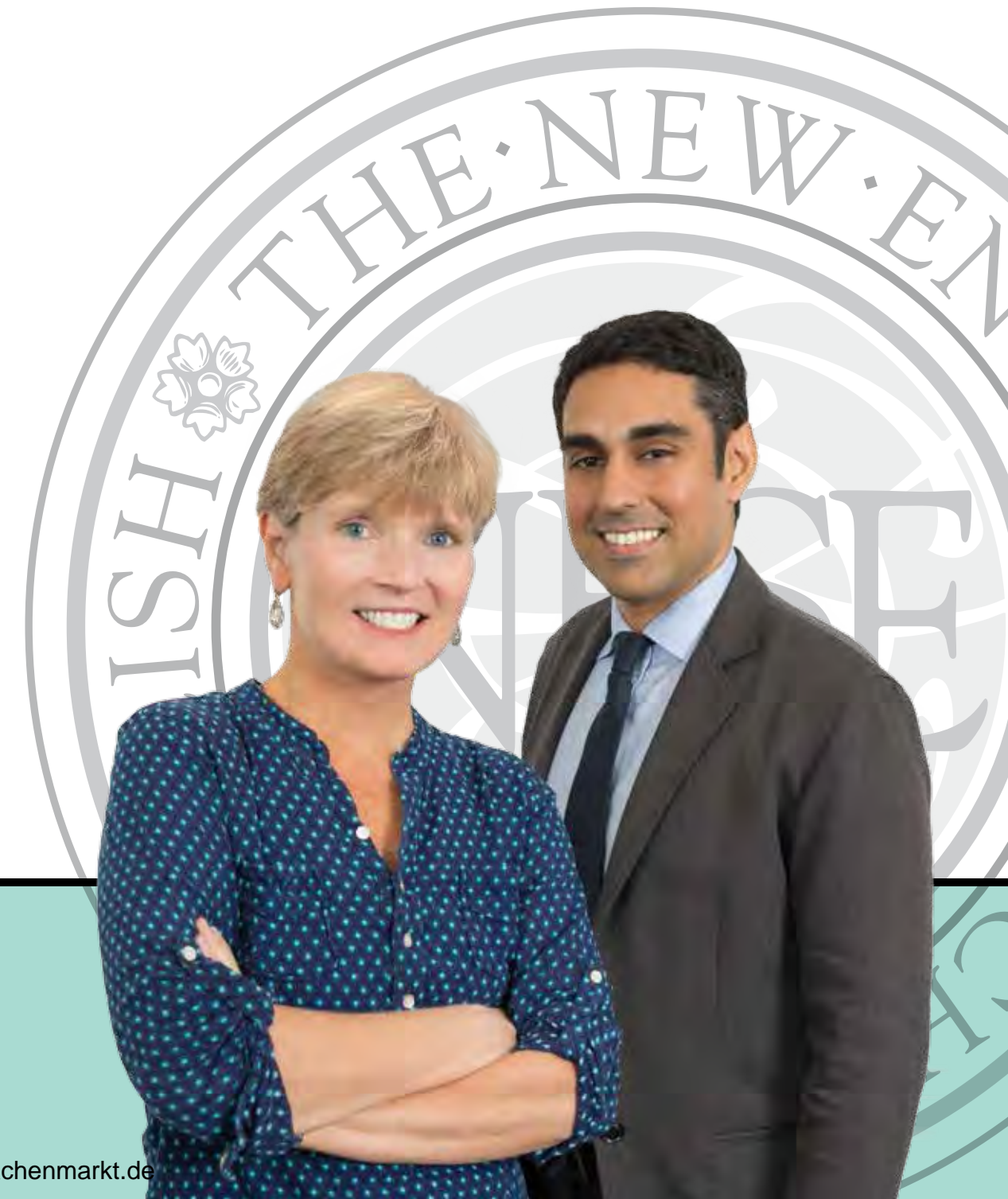
Ashim Shanker, Ed.M.,
Harvard University

Academic Director of NESE



Anna Shine, Ed.M.,
Harvard University

Founder & President of NESE



THE EDUCATORS

Photos by Rose Lincoln

NESE's Personalized Language Acquisition Method

Great schools enable all students, whatever their academic ability, to achieve their best. Great schools also encourage all students to develop their strengths. Thus, in addition to NESE's focus on offering the highest quality courses and the most skilled teachers, we believe that in order to really understand and help every student reach his goals, we must go further.

For this reason, NESE has developed the NESE Personalized Language Acquisition Method, a system that recognizes each student as an individual person, with his own distinct learning style, needs, and goals.

Regardless of his level, culture, age, or unique needs, NESE's Personalized Language Acquisition Method provides the support that each student needs in order to learn English and understand American culture as quickly and effectively as possible.

The four steps that comprise this method:

- ◆ NESE's Skills Assessment
- ◆ Individualized Pace
- ◆ Open-Door Advising
- ◆ On-Going Level Reevaluation

"NESE provides the best combination in an efficient education system: dedicated teachers who have excellent knowledge and an administrative team whose main goal is to help you."

Alex Sandro Dos Santos Bastos | IT Professional, Brazil



METHODOLOGY



The NESE Curriculum

Academic English Courses

All NESE students can follow the Academic English courses of Grammar & Idioms, Conversation & Listening, and Reading & Writing. Each of these courses consists of 10 levels, and students typically complete one level each month. Thus, a student who arrives at NESE with minimal or no knowledge of English can expect to complete the entire NESE 10-level curriculum within 10 months. Students who complete Level 10 acquire a level of proficiency that enables them to successfully use their English in a wide range of professional and academic environments.

Elective⁽¹⁾ & After-School Courses⁽²⁾

In addition to our academic classes, students can choose Elective and After-school Courses, including Intensive TOEFL® Preparation, Business English, Business English for Professionals, Legal English, Pronunciation, University Preparation, and Workplace Communication. Students can combine elective courses with their general academic courses to create a program that best suits their needs. Advanced students can also take courses in their area of particular interest at Harvard Extension School⁽²⁾ and other area colleges.

⁽¹⁾Elective Courses - free of charge. ⁽²⁾After School Courses - extra charges apply.

Courses	Level									
	1	2	3	4	5	6	7	8	9	10
Intensive TOEFL® Preparation									◆	◆
Business English								◆	◆	◆
Business English for Professionals								◆	◆	◆
Legal English								◆	◆	◆
University Preparation								◆	◆	◆
Workplace Communication							◆	◆	◆	◆
Institutional TOEFL® Exam						◆	◆	◆	◆	◆
Pronunciation	◆	◆	◆	◆	◆	◆	◆	◆	◆	◆
Computer-Assisted Language Learning	◆	◆	◆	◆	◆	◆	◆	◆	◆	◆
Vocabulary	◆	◆	◆	◆	◆	◆	◆	◆	◆	◆
Reading & Writing	◆	◆	◆	◆	◆	◆	◆	◆	◆	◆
Conversation & Listening	◆	◆	◆	◆	◆	◆	◆	◆	◆	◆
Grammar & Idioms	◆	◆	◆	◆	◆	◆	◆	◆	◆	◆

"The teachers and administration are so nice and patient. There is no reason to feel nervous at NESE because they are warm and welcoming".

Ece Gundogan | Civil Engineering Student, Turkey



CURRICULUM



Programs for Professionals

Because NESE understands the special challenges, both linguistic and practical, that professionals face when undertaking a course of study overseas, it provides an exclusive structure to meet their needs. Classes, types of teachers, activities, housing, computer labs, and lounge areas have all been intentionally designed to meet professionals' learning styles, limited time, and practical needs. Further, NESE offers a choice of schedules to best suit a professional's goals:

- ◆ To follow our regular Intensive or Semi-Intensive Program
- ◆ To take NESE's specialized courses such as Business English, Legal English, Pronunciation, and TOEFL® Preparation
- ◆ To receive private instruction
- ◆ To attend special group lessons
- ◆ To take any combination of the above



ACADEMICS

"I will tell you, if you want to learn English, it is a good idea to learn English at NESE. You get what you want."

Heinz Hawreliuk | Businessman, Germany



Programs for Students

Because many of our students are eager to attend university, college, or graduate school in the United States, NESE places a special emphasis on providing students with the skills and guidance they need to attain their educational goals. In addition to our elective TOEFL® Preparation course and our After-School University Preparation course, NESE offers the Institutional TOEFL® exam to higher level students each month, and offers a full range of additional services to help prospective university students through its NUPS program.



ACADEMICS

"I have already recommended and will continue to recommend NESE to any students who want a wonderful English learning experience!"

Bander Alnogaithan | Lawyer, Saudi Arabia



NESE University Placement Services (NUPS)

NESE offers University Placement Services (NUPS) to NESE students who plan to study at US Colleges and Universities.

The goal of NUPS is to make sure that your individual needs and abilities match those required by the academic institution of your choice and that you have support, help, and guidance throughout the entire application process.

NESE's years of experience in university advising means that it will be easier to apply - and be accepted - to a program of your choice. NESE's (NUPS) services and the range of workshops, courses, and programs that are offered at NESE, have helped NESE students continue their studies at many area universities.

"NESE is the best school of best schools!!! If you are interested in studying English and applying to graduate or undergraduate programs at a university, then NESE provides a great opportunity to do that!"

Gulnara Ilyassova | Lawyer, Kazakhstan



NUPS



An Environment that Maximizes the Learning Process

Harvard Square: Our Location

NESE is located in Harvard Square in Cambridge, adjacent to Harvard University and just a few minutes' walk from the Charles River.

Harvard Square is a focal point of student activity and one of the most interesting and dynamic student centers in the United States. "The Square", ideally suited for students' needs and recreation, is surrounded by cafe's, restaurants, bookshops, and boutiques. University lectures are only a few steps away, classic and current films are just across the street, theaters and concerts are just around the corner, and music is on the street and in the parks.

Whatever your interests, you can pursue them in Harvard Square.

Cambridge: An Exciting University City

The city of Cambridge is home to Harvard University and MIT (Massachusetts Institute of Technology), two of the world's finest universities, and among America's most prominent centers for students and professionals.

During the academic year (September through May), there are more than 300,000 students in this area.

Few other places in the United States provide students with such an exciting blend of culture, tradition, and history - and English teachers - in the context of a dynamic, contemporary lifestyle.

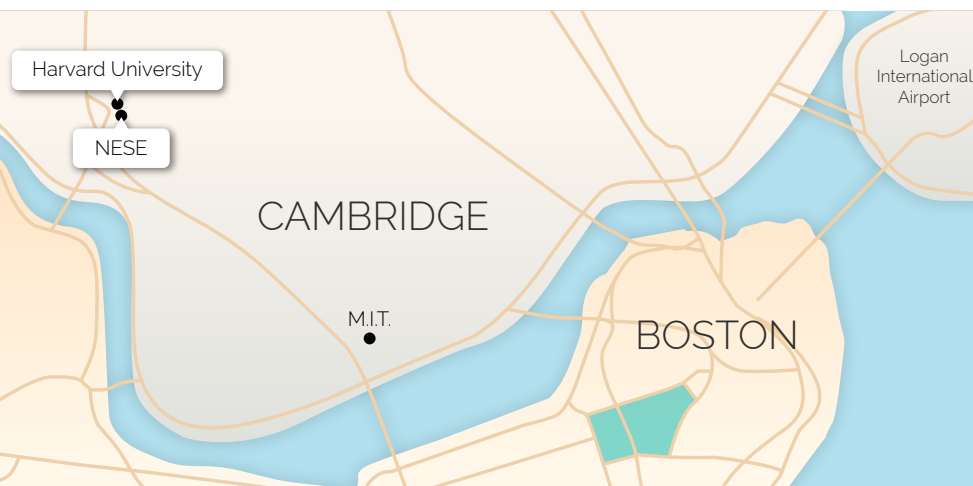
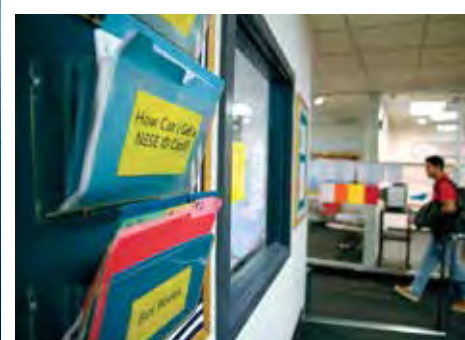
Boston: New England's Academic and Cultural Center

In Boston, you will discover major museums and outdoor art shows, quiet parks and lively nightlife, world-class orchestras and impromptu jazz groups, historical sites and pioneering high-tech firms. You will also have an opportunity to attend some of the lectures, films, concerts, plays, and sporting events sponsored by the city's many colleges and universities. Finally, you won't be able to resist Boston's many gastronomic delicacies.

There is no doubt that you will enjoy this learning atmosphere that combines a respect for the past with a zest for the present and an eye to the future.

"Students at NESE easily take participate in some events at nearby Universities because of the great location in Harvard Square."

Eva Du | Dermatologist, China



LOCATION



Different Types of Housing for Different Types of Students

NESE recognizes that different student needs dictate different housing choices. NESE also recognizes that if a student is not comfortable in his housing, he will not be able to focus well in class. As a result, we pay a great deal of attention to the housing choice that a student makes. Thus, NESE offers American homestays (all with single rooms, breakfast & dinner provided), separate dormitories for professionals and students (each with a choice of single or double rooms, breakfast & dinner provided). All of these options were designed to meet NESE's high standards while offering students the comforts and amenities of a home away

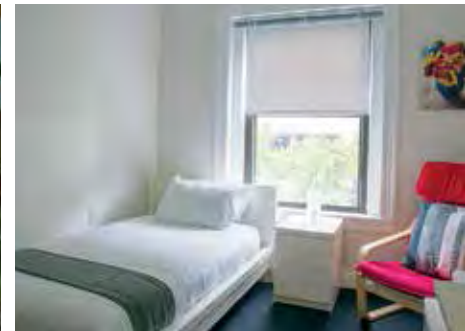
from home. Similar to NESE's ideal location, all NESE housing is conveniently located in attractive and central neighborhoods, close to public transportation and Boston's key attractions.

NESE makes all housing arrangements BEFORE students leave their home countries. This means that they can arrive early and go directly from the airport to their accommodations. Then, on registration day, they will already know the Boston area better, and be relaxed for their first day at NESE.



"At NESE I made friends not only among the students, but also among the amazing staff. These amazing people made me feel welcome, and made me happy every day!"

Alice Macedo | Student, Brazil



HOUSING



Start Experiencing American Culture

At NESE, we encourage you to discover new places, meet new people, and try new things. NESE's extra-curricular activities include our weekly movie party, club activities (such as NESE's most popular "Open Talk Club"), NESE's Language Partner program, and trips to Boston's museums, theaters, and sporting events, as well as excursions to the area's famous historical sites, universities, and local organizations. NESE also arranges frequent weekend trips to New York, Niagara Falls, and other popular spots.

- ◆ Student & Professional Clubs
- ◆ Guest Speaker Program
- ◆ Language Partner Program
- ◆ NESE Day & Weekend Trips
- ◆ Health Club Memberships

"Studying English at NESE was one of the best professional, academic, and personal experiences that I have ever had."

Karem Ivette Lora Kesie | Lawyer, Colombia



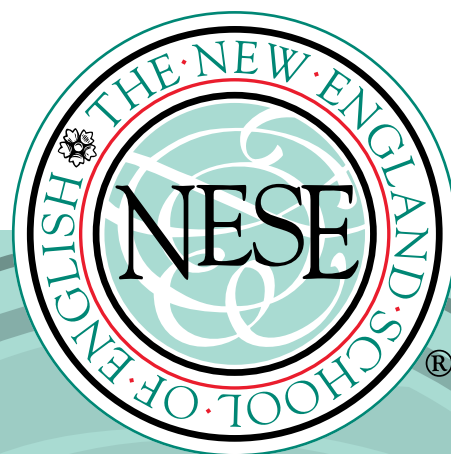
LIFE AT NESE



The New England School of English

Harvard Square

Accredited by:



Copyright © 2015 The New England School of English, Inc. Cambridge, Massachusetts. All rights reserved. Jul, 2016 - r. 1.3-EN
NESE, the NESE logo, and An Extraordinary Opportunity To Learn English are registered trademarks of The New England School of English, Inc. No part of this publication may be reproduced in any form or by any means whatsoever without the prior written permission of The New England School of English, Inc.
Please note: Photos are unrelated to student testimonials.
ILMOCS