



[www.sprachenmarkt.de](http://www.sprachenmarkt.de), Tel. +49-711-12 35 15 40, [service@sprachenmarkt.de](mailto:service@sprachenmarkt.de)

# EMERALD CULTURAL INSTITUTE

Guide to Adult &  
Junior Programmes

Ireland & UK  
2024-2025

Experience Tradition  
Embrace Innovation

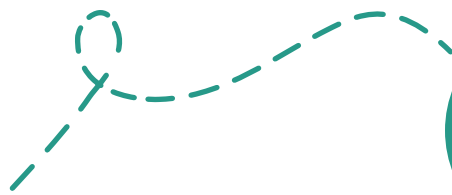


# Contents

---

<b>PALMERSTON PARK</b>	<b>3</b>
<b>ADULT PROGRAMMES</b>	<b>5</b>
Integrated Language Learning	6
General English Courses	8
Intensive Plus Courses	10
Examination Preparation Courses	12
Academic Year Programmes	14
Specialised and Business Courses	16
Teacher Training Courses	17
English Plus Internship	18
University Pathways	19
<b>ACCOMMODATION FOR ADULTS</b>	<b>20</b>
<b>JUNIOR PROGRAMMES</b>	<b>24</b>
Mini-Stay Programmes	25
Summer Junior Programmes	26
<b>JUNIOR CENTRES</b>	<b>30</b>





Click the  
titles to access  
the webpages



**emerald**  
cultural institute

Experience Tradition, Embrace Innovation

# Palmerston Park

Our Palmerston Park school is located in the beautiful residential neighbourhood of Rathgar, in the south of Dublin. Set in its own beautifully landscaped gardens, our school overlooks one of Dublin's oldest public parks, **Palmerston Park**, which dates from 1894. It offers students the chance to study English in a **peaceful and stress-free environment** with the city centre only a **ten-minute tram journey away**. The original school building is a gracious **Victorian mansion** and we have enriched the campus by adding a specially designed modern building with additional classrooms and a large serviced canteen.

[Click here for the Virtual Tour](#)



## Facilities and features include:

Twenty-two modern classrooms

Interactive technology

Wi-Fi access throughout the campus

Private landscaped garden with covered seating areas and heaters

Large serviced canteen and coffee bar

Library, reading room and study space

Located in a prime residential neighbourhood within easy reach of Dublin city centre



Click the  
icons to access  
our social  
media



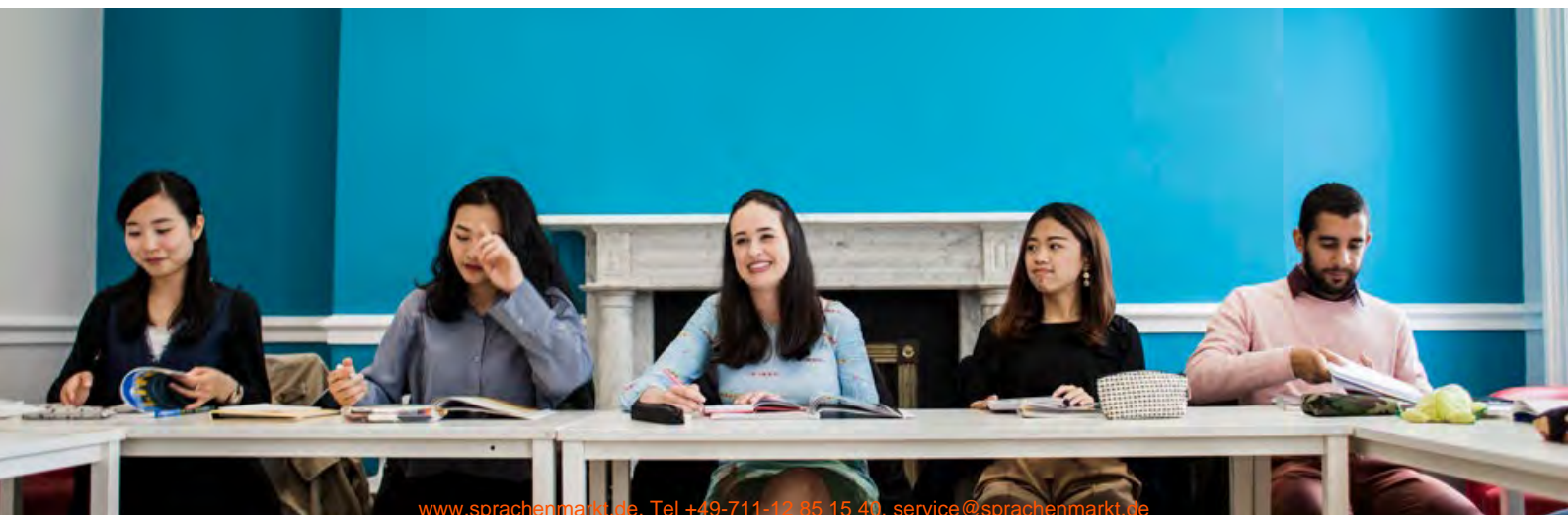








# ADULT PROGRAMMES



# Integrated Language Learning



Emerald is proud to introduce an exciting new choice for our students: **learn English and master 21st Century Life Skills in the same class. This is Integrated Language Learning.**

Based on research compiled by a number of international bodies, including the World Economic Forum, the Council of Europe and covered in the British Universities 2018 report on “Solving Future Skills challenges”, **we have identified the need to provide our English Language Students with a unique opportunity to develop key soft skills while improving their competence in English.** This will **increase their employability in today’s workforce.** Using a unique syllabus developed in house by Emerald’s Academic expert team, our students will now have the opportunity to develop their skills.



Student from B1 to C1 level will benefit from these exciting new modules as part of their Intensive English course at Emerald. Every week, as an integral part of their programme, our students will learn English by studying new Professional- Development topics while continually focusing on their soft skills.



Skills development opportunities include:

**CREATIVITY**

**CRITICAL THINKING**

**LEADERSHIP**

**COLLABORATION**

**TIME MANAGEMENT**

**PROBLEM SOLVING**

**PRESENTATIONS**



# Further Education and Employability

Emerald has over the years **developed strong connections with the university and business world. The student's journey is also our journey.** We want to understand the needs of our students and offer them a clear vision of the possibilities they will have once their language studies are completed.



Some of our programmes offer a proven pathway to the Foundation Programmes in our **Partner universities**, including Trinity College Dublin and NCUK partner universities in Ireland and the UK.

We can also provide **English plus Internship programmes** and we collaborate with **multinational and multicultural companies.**

Professional development workshop topics include:

**Chairing a Meeting**

**Alternatives to PowerPoint**

**Goal-Setting**

**Networking**

**Effective Argumentation**

**Intercultural Skills**

**Ethical Reasoning**



# General English Courses



## Intensive Course

The Intensive Course covers the four basic skills of listening, speaking, reading and writing and is designed to improve communication in spoken and written English.

**Tuition:** 20 X 60 minutes of group tuition per week

**Times:** 09.00-11.00 and 11.30-13.30 Monday to Friday

**Class size:** Maximum 14, Average 9

**Minimum duration:** 2 weeks

**Age:** 17+

**Levels:** Elementary (A1) to Advanced (C1)

**Starts:** Every Monday



## Combined Course

The Combined Course offers the opportunity to benefit from both a group-oriented learning environment (morning classes), together with one-on-one lessons, which concentrate on particular priorities and areas of interest.

**Tuition:** 25 hours tuition per week. 20 hours group tuition + 5 hours individual tuition

**Times:** 09:00 - 11:00 and 11:30 - 13:30 Monday to Friday + 5 hours per week of individual tuition

**Class size:** Maximum 14, Average 9

**Minimum duration:** 2 weeks

**Age:** 17+

**Levels:** Elementary (A1) to Advanced (C1)

**Starts:** Every Monday

## Individual Tuition

A private teacher will work to completely customise lessons and design the content to suit the student's exact needs. Student and teacher can agree the focus of lessons based on specific areas of language development.

**Tuition:** Up to 6 hours per day of individual tuition

**Times:** Flexible timetables

**Minimum duration:** 1 week

**Age:** 17+

**Levels:** All levels

**Starts:** Every Monday

**In person and online options (subject to availability)**





# Intensive Plus Courses



## Intensive Plus Speaking Skills

This course is designed to improve students' fluency in English. It allows students to develop their language skills in the morning lessons and put these skills into practice in the afternoon group conversation classes.

**Tuition:** 26 X 60 minutes of group tuition per week

**Times:** 9:00 - 11:00 and 11:30 - 13:30 Monday to Friday and 14:15 - 16:15 Tuesday, Wednesday, Thursday

**Class size:** Morning Class: Maximum 14, Average 9  
Afternoon Class: Maximum 9

**Minimum duration:** 2 weeks

**Age:** 17+

**Levels:** Pre-Intermediate (A2) to Upper Int. (B2)

**Starts:** Every Monday

## Intensive Plus Business

This Course is aimed at students with either an academic or practical business background who want to develop their business English skills in realistic business settings. It combines the morning classes of the Intensive Course with business-language specific afternoon lessons.

**Tuition:** 26 X 60 minutes of group tuition per week

**Times:** 9:00 - 11:00 and 11:30 - 13:30 Monday to Friday and 14:15 - 16:15 Tuesday, Wednesday, Thursday

**Class size:** Morning Class: Maximum 14, Average 9  
Afternoon Class: Maximum 6

**Minimum duration:** 2 weeks

**Age:** 21+

**Levels:** A minimum language level of Upper Intermediate is required (B2)

**Starts:** Every Monday (subject to minimum numbers)

## Intensive Plus English for Academic Purposes (EAP)

This course is specifically designed for students who are preparing to join an undergraduate or postgraduate programme in an English speaking university. If you already have a good level of English, but need to develop the additional techniques and skills necessary for academic study, then this course is the most suitable option.

**Tuition:** 26 X 60 minutes of group tuition per week

**Times:** 9:00 - 11:00 and 11:30 - 13:30 Monday to Friday and 14:15 - 16:15 Tuesday, Wednesday, Thursday

**Class size:** Morning Class: Maximum 14, Average 9  
Afternoon Class: Maximum 8



**Minimum duration:** 4 weeks

**Age:** 17+

**Levels:** A minimum language level of Upper Intermediate is required (B2)

**Starts:** Fixed Start Dates





# Examination Preparation Courses



## Cambridge Examination Course

Our Cambridge Examination Courses are taught by expert teachers who have a proven success record in preparing students for the First Certificate, Advanced and Proficiency Examinations.

**Tuition:** 20 X 60 minutes of group tuition per week

**Times:** 09.00-11.00 and 11.30-13.30 Monday to Friday

**Class size:** Maximum 14, Average 9

**Minimum duration:** 8-12 weeks

**Age:** 17+

**Levels:** FCE – CEFR B2/CAE – CEFR C1

**Starts:** Fixed Start Dates



[Click here for dates and information about FCE and CAE](#)

FCE

CAE

\*Entrance to any exam preparation class is subject to an assessment test and a minimum entry level is required for each course.

## IELTS Examination Course

The IELTS Examination Course focuses on developing key techniques and strategies for the IELTS Examination. Participants complete regular practice tests and are taught how to approach all the sections of the test effectively. Our Academic Team are available to assist with the application process for the IELTS Examination.

**Tuition:** 20 X 60 minutes of group tuition per week

**Times:** 09:00 - 11:00 and 11:30 - 13:30 Monday to Friday

**Class size:** Maximum 14, Average 9

**Minimum duration:** 2 weeks

**Age:** 17+

**Levels:** A minimum language level of Intermediate+ is required (B1+)

**Starts:** Every Monday

## Intensive Plus IELTS Preparation Course

The Intensive Plus IELTS examination preparation course is for those students who wish to supplement their Intensive Course with extra afternoon classes to prepare for the IELTS examination in small groups.

**Tuition:** 26 X 60 minutes of group tuition per week

**Times:** 09:00 - 11:00 and 11:30 - 13:30 Monday to Friday and 14:15 - 16:15 Tuesday, Wednesday, Thursday

**Class size:** Morning Class: Maximum 14, Average 9  
Afternoon Class: Maximum 8

**Minimum duration:** 2 week

**Age:** 17+

**Levels:** A minimum language level of Intermediate+ is required (B1+)

**Starts:** Runs on an ongoing basis (subject to a minimum number)



At Emerald Cultural Institute students can prepare and take different English examinations. **English certificates are essential tools to access professional and university courses.** Students can also sit an English examination to **increase their career opportunities** or just to **test their proficiency level**.

- Recognised **Cambridge** Examination Venue
- Preparation centre for **Cambridge ESOL and IELTS** Examination
- Recognised centre for **TOEIC** Examination
- Recognised centre for **TIE** Examination
- Recognised centre for **Trinity** Examination
- Recognised centre for the **Oxford Test of English**



Approved Test Centre

[Click here for more information about the exams](#)



### Included in all general English and examination preparation courses:

Online placement test in advance of arrival

Tuition of 60 minutes per lesson

Interesting and stimulating supplementary course materials. Exclusive Emerald-designed Integrated Language Learning (General English courses CEFR B1+)

Rich and varied Social Programme. Seminars such as “Living and Working in Ireland” and “CV Preparation and Interviews”

Diploma on completion of course with personalised student report

# Academic Year Programmes



Our Academic Year Programmes can be structured to suit each individual's requirements and a suitable study path is designed for the student based on the starting level, academic needs and learning objectives.

Flexibility is a key part of the structure of these programmes. Academic Year Programmes allow students to combine different modules and courses within their programme. All our Academic Year students are monitored regularly throughout their programme by their academic mentor, their class teachers and the Director of Studies.

**Tuition:** Choice of 20 or 26 hour programmes

**Duration:** From 25 to 35 weeks

**Age:** 18+

**Levels:**

**AYP1:** Elementary to Advanced, 20 morning hours

**AYP2:** Pre-Intermediate to Advanced, 26 morning and afternoon hours

**AYP3:** Elementary to Advanced, combination of 20 and 26 morning and afternoon hours

**Starts:** Every Monday

\* Academic Year Programmes may be subject to change as a result of updates to the current Immigration Guidelines and Procedures.

\* Immigration regulations require all non-EU students to undertake a recognised examination at the end of an Academic Year Programme. Recognised Examinations accepted by Immigration include IELTS, Cambridge Examinations and the Test of Interactive English (TIE).

Academic Year Programme -  
Study & Work Programme

AYP1

AYP2

AYP3

Possibility of **combining different modules and courses:**

- General English
- Exam Preparation courses
- Intensive Plus Courses (AYP2, AYP3)

## Unique Emerald Services

Academic mentoring system which provides students with advice and support to help in areas such as study planning, examination registration and preparation, career and further study opportunities

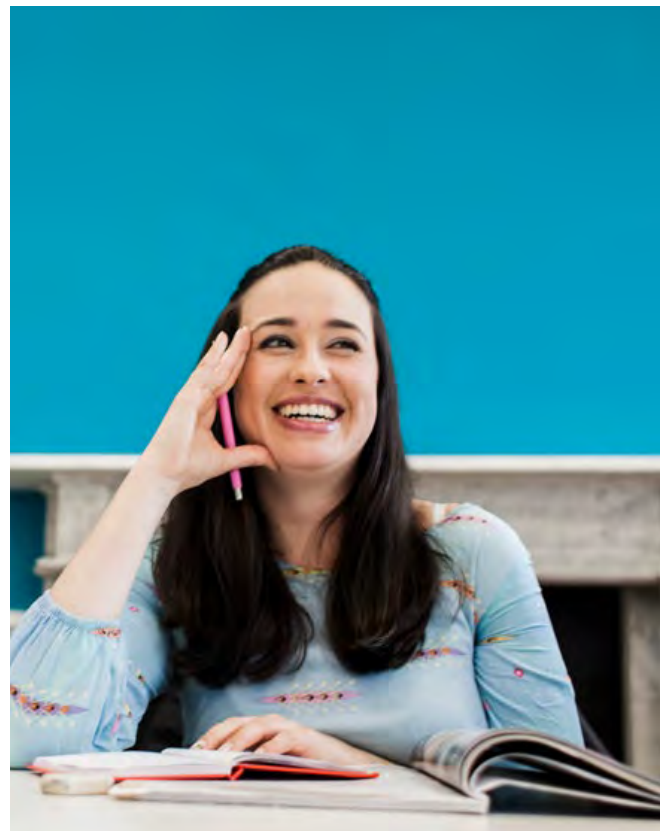
Career Guidance and Seminars such as "Living & Working in Ireland" and "C.V. preparation & interview techniques"

Free TIE preparation advice and support

Integrated Language Learning for employability and further education

Free supervised study sessions

Flexibility to combine different modules and courses within the programme







# Specialised and Business Courses



Our Specialised and Business courses have been designed for executive clients with unique learning needs. The programmes focus on maximising progress and achieving desired learning objectives in a short time frame.

## Intensive Combined Course

General international group classes in the morning and afternoon hours of one-to-one tuition are provided. Individual tuition can concentrate on specific area of interest or any problem areas a student may have.

**Tuition:** 20 x 60 minutes of group tuition + 10 hours of individual tuition per week

**Times:** 09:00 - 11:00 and 11:30 - 13:30 Monday to Friday and 14:15 - 16:15 Monday to Friday

**Class size:** Mornings maximum 14, average 9.  
Afternoons individual tuition

**Minimum duration:** 1 weeks

**Age:** 21+

**Levels:** Elementary (A1) to Advanced (C1)

**Starts:** Every Monday (subject to availability)

## Personal Intensive Course

This course is designed for the professional who wishes to concentrate on particular language skills or work on specific areas of English. The course is tailor-made to suit the exact requirements of the client.

**Tuition:** 20, 25 or 30 X 60 minutes of individual tuition per week

**Times:** From 4 to a maximum of 6 hours per day Monday to Friday

**Minimum duration:** 1 week

**Age:** 21+

**Levels:** All levels

**Starts:** Every Monday (subject to availability)





# Teacher Training



A variety of practical courses have been specifically designed for non-native teachers of English at primary and secondary level:

- Modern Methodology & Language Development for Primary Teachers (SPC5)
- Modern Methodology & Language Development for Secondary Teachers (SPC6)
- Practical CLIL for Teachers (SPC7)

**Tuition:** 25 X 60 minutes per week including lessons, seminars and cultural activities

**Times:** 09.00–11:00 and 11.20–13.10 Monday to Friday Afternoon seminars and cultural programme provided on designated afternoons and evenings

**Duration:** 1 or 2 weeks

**Age:** 21+

**Levels:**

SPC5: minimum level of Intermediate (B1)

SPC6: minimum level of Upper-Int. (B2)

SPC7: minimum level of Upper-Int. (B2)

**Starts:** Fixed Start Dates (subject to minimum number)



## Erasmus+ Funding

Qualifying participants can be funded by the Erasmus Plus programme. Erasmus+ is the EU's programme to support education, training, youth and sport.

### How to Apply

We recommend that you contact your National Agency to see what your funding options are. You can also use EU resources on E+ funding.

**Our PIC number is: 946742214**

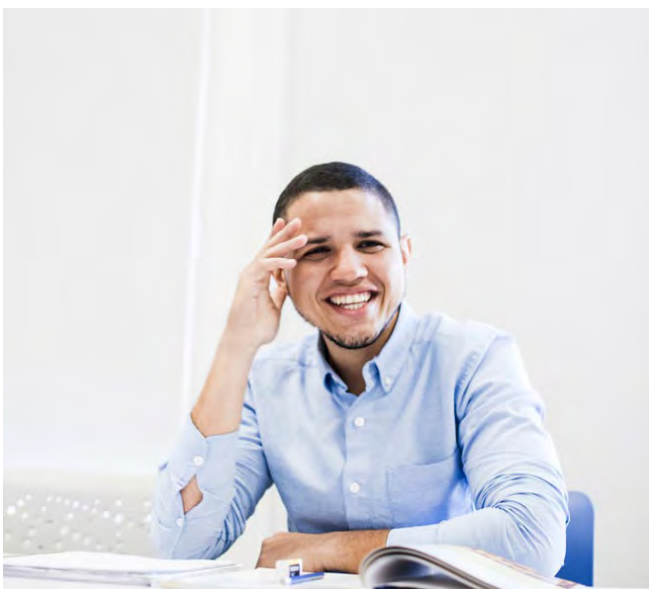
**Organisation ID: E10127281**

# English Plus Internship



The English plus Internship Programme is the ideal option for our students who want to simultaneously improve their future career prospects by gaining valuable experience to include on a CV. This course combines a minimum of four weeks language study with a guaranteed internship of at least eight weeks with real, hands-on work experience.

For this programme we cooperate with partner organisations who are specialised in the area of recruitment. Premium and standard options are available in different fields.



**Non-EU students** registering with Immigration for a 25-week programme are eligible for the internship option during their official holiday periods.

**Remote internship options are also available.**

**Tuition:** Varies depending on the chosen language course

**Times:** Varies depending on the chosen language course

**Minimum duration:** Minimum 4-week language course and 8-week internship

**Age:** 18+

**Levels:** Minimum level Upper-Int. (B2)

**Starts:** Every Monday



## STANDARD OPTION

- Company placement in areas such as marketing, reception, administration, retail, food & beverage, HR and accounts
- Certificate of completion

## PREMIUM OPTION

- Customized internship placement in a variety of fields
- Dedicated internship advisor
- Academic credit facilitation
- Personalized Program Success Plan
- Re-entry Handbook and Support
- Comprehensive support leading up to, during, and following the internship
- One-on-one coaching calls/meetings - initial interview, orientation call, and pre-departure call



# Pre-Sessional Foundation Programme

For students with a High School Diploma who want to go to an English speaking university or Higher Education Institute but need additional help to develop their English. Our programme offer a proven pathway to the Foundation Programmes in our Partner universities, including Trinity College Dublin and NCUK partner universities in Ireland and the UK. It is designed to get you to a minimum score of IELTS 5.0 or equivalent.

**Tuition:** 20 x 60 minutes of group tuition per week;  
OR 20 x 60 minutes of group tuition per week + 6 X 60 minute of small group electives

**Times:** Morning classes: 09.00 -11.00 and 11.30-13.30, Afternoon Electives (26-hr programme): Tuesday – Thursday 14.15– 16.15

**Class size:** Maximum 14, Average 9

**Duration:** 3, 6 or 9 months

**Age:** 17+

**Levels:** A2 or minimum IELTS 3.5 (or equivalent)\*

**Starts:** Every Monday

\* The length of your Pre-Sessional English course will be determined by:  
• Your current level of English (the lower your level, the more time you need)  
• The entry level you require for your chosen programme  
To decide how long you need to study with us (3, 6 or 9 months) you will take our pre-course written and oral assessment test with our Academic team.

**NCUK**  
THE UNIVERSITY CONSORTIUM



## Gap Year Academic Programme

Combine a semester studying at Emerald Cultural Institute with a semester at Maynooth University. University modules are from 34 academic departments over 3 faculties, including modules in Law, Business, History, Media, Engineering and Science. Receive ECTS Credits for your semester abroad. Students attending the Fall semester can also choose to attain a Certificate in International Business.

**Tuition:**

Gap Year Programme 1: 12 weeks English for Academic Purposes (20 hours General English + 6 hours of EAP per week) + Semester at Maynooth University

Gap Year Programme 2: 25 weeks Academic Year Programme (20 hours General English + 6 hours of Electives per week–IELTS/EAP/Business/Communication) + Semester at Maynooth

**Class size:** Maximum 14 for the English course

**Age:** 18+

**Levels:** \*Gap Year Programme 1

Level required: IELTS 6.0 (or equivalent)

Gap Year Programme 2

Level required: IELTS 5.5 (or equivalent)

\*Application requirements for Maynooth University:

- GPA 2.6 (if below must supply two references)
- Transcript
- Passport

For more information about Maynooth University visit the website.

Please contact us at [emerald@eci.ie](mailto:emerald@eci.ie) for information about start dates for the Gap year Programme in 2023-2024.



**Maynooth University**  
National University of Ireland Maynooth



# ACCOMMODATION FOR ADULT STUDENTS





## Homestay



Staying with a host family gives you an excellent opportunity to **develop your language skills in a natural everyday context**, and is a very popular option with our students. The host family experience is one of the best ways for students to encounter the world-famous **Irish hospitality** and discover **Dublin's lifestyle and culture**.

Host family accommodation is available to both our junior (minimum age 13 years old) and adult students in our Dublin locations with either a half-board option for our adults or full-board option for our juniors.

**Our families are carefully selected and monitored by our in-house accommodation team.** Many of our host families have been a part of the Emerald experience for over 12 years, due to the dedicated assistance from our accommodation team and their **ongoing communication** with our homestay families.

Our families are situated within walking distance or on direct bus or tram routes to and from the centres. All families are situated close to city centre bus or tram routes.



## Partner residences

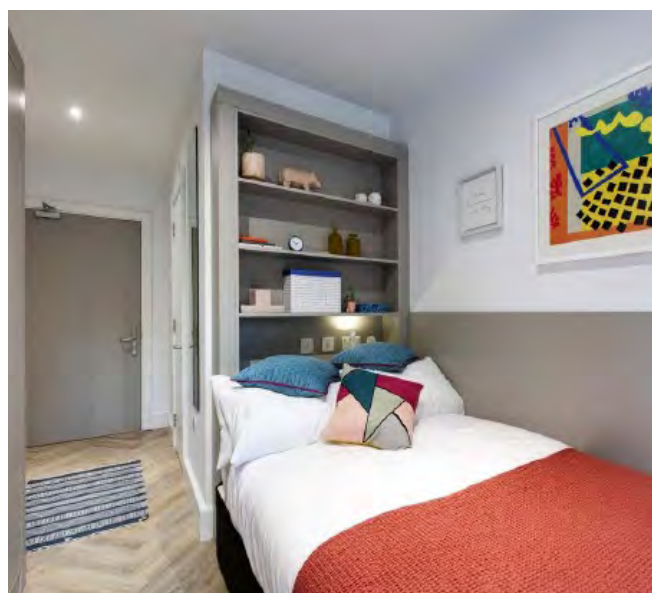


**We provide a range of residence options in different locations across Dublin city.**

These offer mainly **single rooms with private bathrooms** in apartments with shared living and kitchen facilities, social spaces and a variety of facilities and services are also available.

It is the ideal choice for people who wants to make friends with other students of different nationalities, but at the same time maintaining their own private space and flexible schedules.

Please contact us to check rates and availability for our year-round residence options, before proceeding with booking a course.





# Summer University Residence



**Trinity Hall** is an official residence of Trinity College Dublin, which is available to our students during the summer period.

The residence is situated in the quiet residential area of Dartry in Dublin. It is only a short 10-minute LUAS (tram) ride to the city centre. It is conveniently located a **2-minute walk from our Palmerston Park school**.

Trinity Hall offers **single or twin bedrooms with en-suite bathrooms**, in apartments with shared kitchen and living areas.

The residence also offers 24-hour laundry facilities, an on-site convenience shop, free WiFi, TV lounges, quiet reading space, game areas, sports facilities, spacious canteen and 24-hour on-site security.

The residence is also close to a wide range of amenities including supermarkets, delicatessens, shops, cinemas, cafés, restaurants and a pharmacy.

## Hotel and B&B

**We collaborate with Hotels and Bed & breakfast nearby the school or Dublin city centre.**

Staying in a Hotel is ideal as a **temporary option**, for a **short stay** or **if you plan to come to Dublin to study with your family**.

Emerald can help you arrange your Hotel or B&B stay, contact us for more information, prices and availability.











# JUNIOR PROGRAMMES



[www.sprachenmarkt.de](http://www.sprachenmarkt.de), Tel +49 711-12 85 15 40, [service@sprachenmarkt.de](mailto:service@sprachenmarkt.de)





# Mini-Stay Junior Programmes



The Emerald Mini-Stay programmes are **offered between the months of September and May** and are designed to cater for groups of young learners and school groups, who participate in **tailor-made programmes** of lessons and activities.

The Mini-Stay programmes encourage students to develop their language skills in a natural, everyday context. We offer two types of programme: our **Standard Mini-Stay Programmes** and our more specialised **Mini-Stay Plus Programmes**.

**Tuition:** 15 hours per week (possibility of more hours per week on request)

**Duration:** minimum of 6 nights stay

**Levels:** All levels



Mini-Stay programmes are available at our year-round Palmerston Park centre.

For a quotation tailored to your requests, contact us at [emerald@eci.ie](mailto:emerald@eci.ie)

## What is included?

15 hours (60-minute classes) tuition fee per week

Host family accommodation (students are placed two per family)

Return airport transfers

Online placement test

Use of textbook and materials

Welcome pack and final diploma

Single full-board host family accommodation for group leaders

# Summer Junior Programmes - Ireland and UK

## Multi-Activity Programme



**Tuition:** 15 hours per week

**Age group:** 11-17 (13-17 host family)

**Levels:** All levels

This programme is ideal for students who want to learn English and enjoy an interesting and varied social programme, including visits to popular cultural attractions, sports and tournaments, dance, Irish music, drama or arts & crafts.

### CENTRES

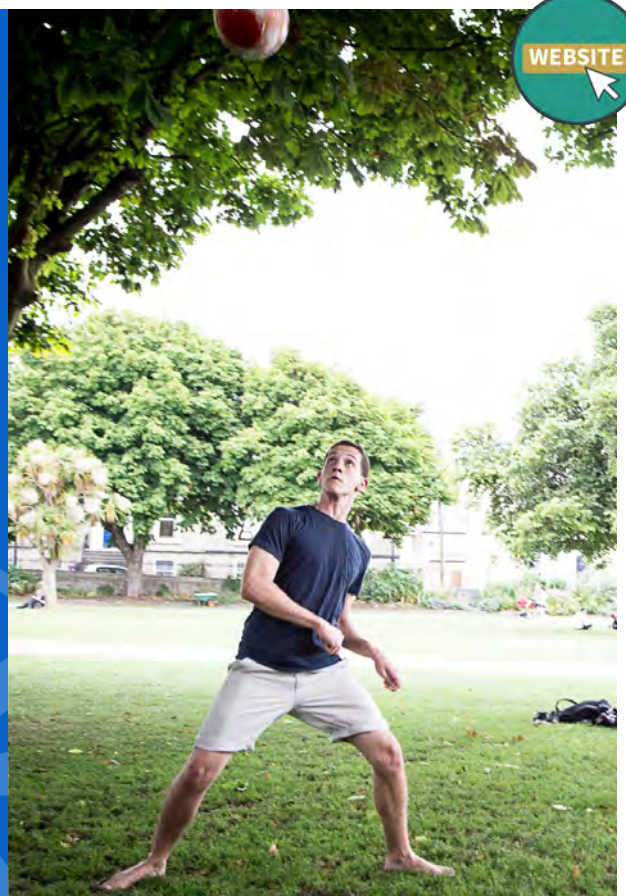


- Trinity Hall (R)
- Alexandra College (R/H)
- Sandford Park School (H)

### CENTRES



- Gordon's School (R)
- St. George's (R)



WEBSITE



## Intensive Course



**Tuition:** 20 hours per week

**Age group:** 14-17

**Levels:** Intermediate to Advanced

The Intensive Course is designed for learners who wish to improve their fluency, it offers students the opportunity to concentrate fully on their conversation and speaking skills. A full programme of activities is also offered.

### CENTRES



- Trinity Hall (R)
- Sandford Park School (H)

### CENTRES



- Gordon's School (R)
- St. George's (R)





## Young Adult Programme



**Tuition:** 20 modules per week

**Age group:** 16-19

**Levels:** Intermediate to Advanced

This is an Intensive language course with an interesting activity programme themed “Discovering Dublin”. Lesson content includes Leadership & Development, English for the Workplace and Irish Life & Culture.

### CENTRES

- Alexandra College (H)
- Trinity Hall (R)

## Trinity Walton STEM Programme



**Tuition:** 10 hours of General English  
+10 hours of STEM per week

**Age group:** 14-17

**Levels:** Upper-Int. to Advanced

In collaboration with the prestigious Trinity Walton Club at Trinity College Dublin, this unique programme allows students to enhance their STEM (Science, Technology, Engineering and Maths) knowledge while improving their English language skills.

### CENTRES

- Trinity College (H)
- Trinity Hall (R)



## Discover London Course

**Tuition:** 15 hours per week

**Age group:** 14-17, 16-18

**Levels:** All levels



Only available at our London Rose Bruford summer school, it is the perfect way to spend a summer of learning and sightseeing. This programme is made up of English classes and visits to London sights, museums, art galleries and shopping hotspots.

**CENTRES** 

- Rose Bruford (R)



## Performing & Production Arts

**Tuition:** 15 hours per week on acting, audio production, design for performance and scenic arts

**Age group:** 14-18

**Levels:** Upper-Int. to Advanced



This ground-breaking course will introduce our students to a range of creative and productive activities, essential to the development and delivery of a performance. The course will cover acting, audio production, design for performance (lighting, set and costume) and scenic arts.

**CENTRES** 

- Rose Bruford (R)







## What is included?

15 or 20 hours of 60-minute lessons per week taught by qualified and experienced staff

Full board homestay or residence accommodation

A full programme of extra curricular activities

Transportation costs from and to the centre and activities (if not within walking distance)

Registration fee and entrance fees

Use of textbooks and teaching materials

Diploma certifying the student's attendance and competence

One full-day excursion per week







# JUNIOR CENTRES







## Sandford Park School

Sandford Road, Ranelagh,  
Dublin 6, Ireland  
Homestay

School is situated on 2.5 acres of secluded wooded grounds in Ranelagh village.

Main building is a distinctive mansion with panelled rooms and stained glass.

Multi-purpose sports hall allows for badminton, basketball, volleyball and indoor football

Spacious and well-equipped classrooms.

Student canteen with panoramic views of the school's playing grounds.

5 minutes from Dublin city centre by tram,  
10 minute walk from Stillorgan Shopping

**Summer Programmes  
available at this  
campus:**

- Multi-activity
- Intensive Course
- Young Adult



## Alexandra College

Milltown Road, Milltown, Dublin 6, Ireland  
Residential

Residential Accommodation in multi-bed en-suite rooms

Outdoor sports facilities including hockey, soccer, rugby, athletics pitches, basketball & tennis courts

22 acres of gardens and sports grounds, with extensive playing fields

Multi-purpose sports hall for indoor sports and music & drama events

Restaurant on campus

Modern spacious classrooms & WiFi

10 minutes from Dublin city centre by tram,  
10 minutes walk from Emerald Palmerston Park

**Summer Programmes  
available at this  
campus:**

- Multi-activity



## Trinity Hall

Dartry Road, Dartry, Dublin 6, Ireland  
Residential

Accommodation in single and twin en-suite rooms

On-campus restaurant

Student common rooms for recreation and activities, games rooms

Laundry facilities & WiFi

15 minutes from Dublin city centre by tram,  
5 minutes walk from Emerald Palmerston Park

Students attending STEM programme have classes at Trinity College, students attending Young Adult Programme have classes at Alexandra College

**Summer Programmes available at this campus:**

- Multi-activity
- STEM
- Young Adult



## Griffith College

South Circular Road, Dublin 8, Ireland  
Residential

Accommodation in twin rooms with two bathrooms per apartment

On-campus restaurant

Student common rooms for recreation and activities, games rooms

Laundry facilities & WiFi

Sports facilities are offered at alternative locations within easy access of the residence

Landscaped courtyards and canal walkways

20 minutes walk from Dublin city centre

**Summer Programmes available at this campus:**

- Multi-activity





## Gordon's School

Woking, Surrey, UK  
Residential

Beautiful large grounds in a village location

Accommodation: shared rooms and bathrooms

Excellent sports facilities including indoor sports hall, tennis courts, lots of outdoor space, a dance studio, a drama studio and art rooms.

Kitchen renowned for its quality food

Comfortable common rooms in each house

Laundry once per week

25 minutes by train from central London

## St. George's School

Wells Lane, Ascot, Berkshire, UK  
Residential

Residential Accommodation in shared rooms

30 acres of stunning grounds and amazing facilities

Facilities include a swimming pool, tennis courts, football and Lacrosse pitches, a dance studio, a drama studio, cookery and art rooms, and a theatre

6 miles from Windsor and 30 minutes from central London

15 minute walk from Ascot train station

**Summer Programmes  
available at this  
campus:**

- Multi-activity
- Intensive

**Summer Programmes  
available at this  
campus:**

- Multi-activity
- Intensive



# Rose Bruford

Burnt Oak, Ln Sidcup, London, UK

Residential

Residential Accommodation in single rooms  
ensuite

Located in a 16th Century Manor house set  
within the beautiful surrounds of Lamorbey  
Park

Special drama courses available twice a week

Facilities include a 330 seat theatre, an outdoor  
stage, football and hockey pitches aswell as  
access to swimming, basketball and table  
tennis

20 minutes to Charing Cross

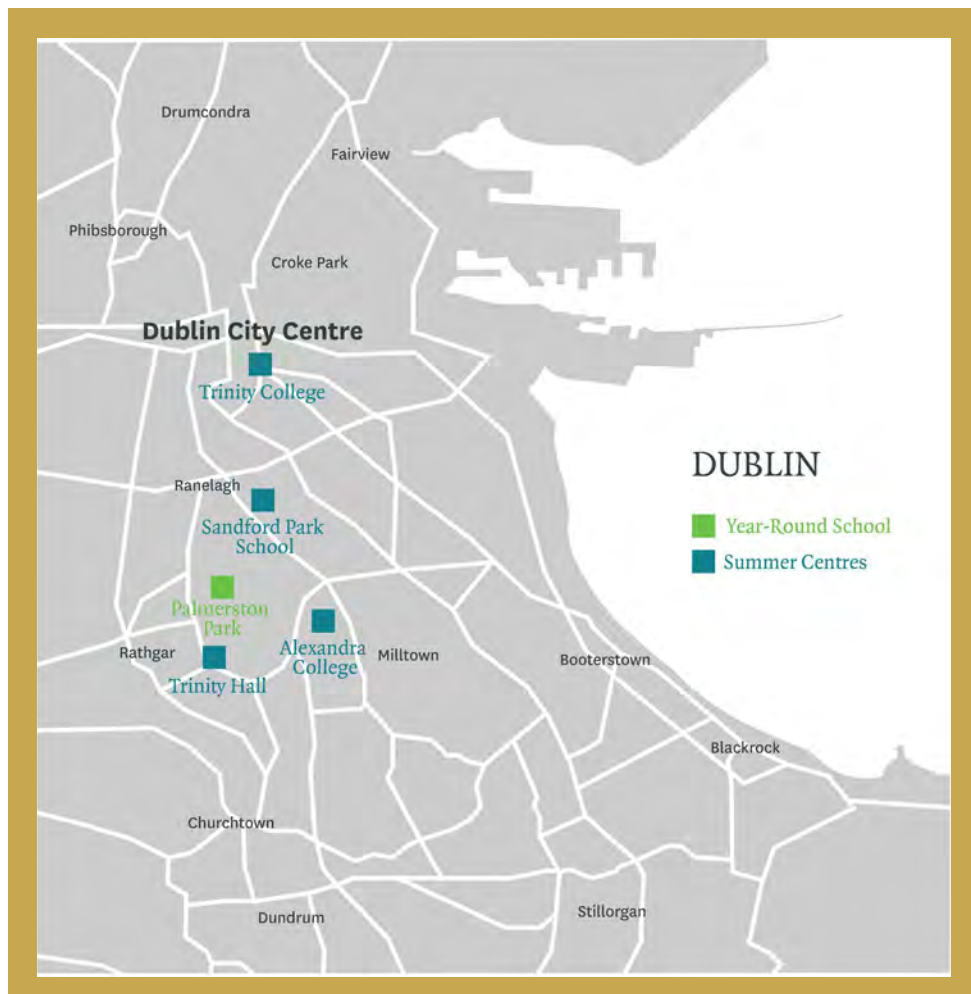
Ideally located for exciting excursions to  
Brighton, Windsor and Cambridge

**Summer Programmes  
available at this  
campus:**

- Discover London
- Performing &  
Production Arts



# Our Locations in Ireland and in the UK



*“People are at the heart of what we do.  
We provide a transformative educational  
and cultural experience within a positive,  
nurturing environment where both students  
and staff can grow and prepare to meet their  
personal and professional goals”*



**emerald**<sup>®</sup>  
cultural institute

Experience Tradition, Embrace Innovation